



Versatile Family Home with views across open fields.

Guide Price £635,000

Winkworth



MILTON ROAD, PEWSEY SN9 5JJ

Set in approximately one third of an acre a spacious Four bedroom detached house.

An individually designed 4 bedroom detached home with versatile accommodation and set in approximately one third of an acre with extensive views across open fields.

The accommodation to the ground floor consists of a good sized lounge/diner with door leading to garden and a shower room which makes it perfect for a separate annexe, sitting room with parquet flooring and feature fireplace with wood burning stove, study, fitted kitchen/breakfast room with ample wall and base units, good sized bathroom with rain shower over bath, bedroom four with door leading to side garden, and garden room/conservatory overlooking the front of the property providing stunning views.

On the first floor will be found three good sized bedrooms and family bathroom. There are gardens to the front, rear and side of the property with driveway providing ample parking and double detached garage.

This is an ideal family home with good sized accommodation and situated close to all local amenities.

Services

Mains electricity, water and drainage. Oil fired central heating.

EPC: D

Council Tax: E

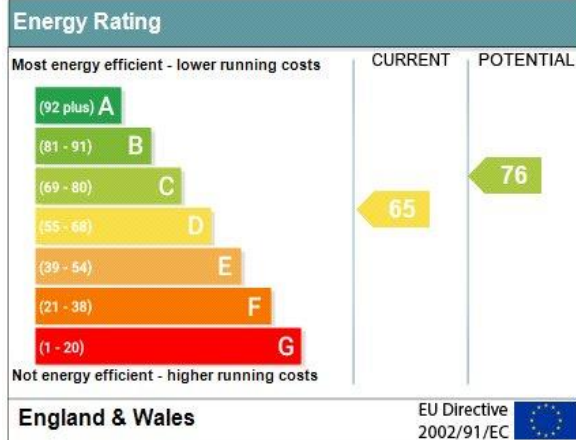


LOCATION

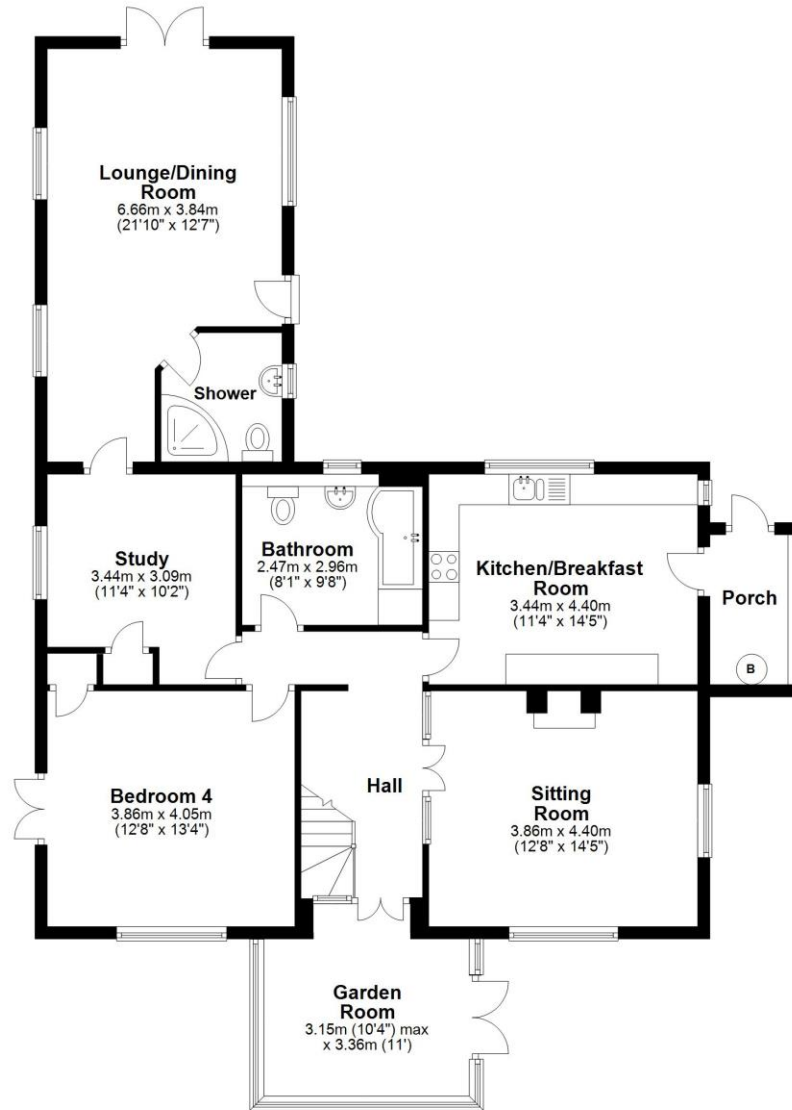
Pewsey is a vibrant community in the Wiltshire Downs, it is designated as being of 'Outstanding Natural Beauty' and comprises a rich agricultural valley surrounded by rolling downland. It offers a wide range of independent shops and amenities with secondary and primary schools, village hall, fire station, GPs, bank, electrical stores, Co-op supermarket, florists, cafes and butcher to name only a few. On the edge of this popular town is a railway station with services to London (Paddington 65mins approx.) and the West. Nearby Marlborough (7 miles) and Devizes (12 miles) offer a wide range of other amenities.



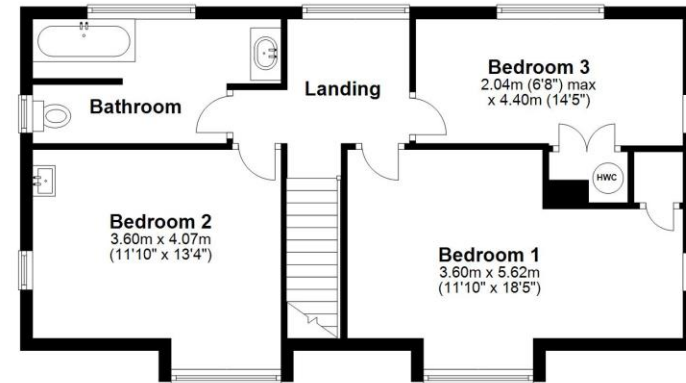
Address: 19 Milton Road, PEWSEY, SN9 5JJ
RRN: 0320-2384-4240-2507-6571



Ground Floor
Approx. 118.5 sq. metres (1275.9 sq. feet)



First Floor
Approx. 57.5 sq. metres (618.6 sq. feet)



Total area: approx. 176.0 sq. metres (1894.5 sq. feet)

Marlborough | 01672 552777 | marlborough@winkworth.co.uk

winkworth.co.uk

Winkworth wishes to inform prospective buyers and tenants that these particulars are a guide and act as information only. All our details are given in good faith and believed to be correct at the time of printing but they don't form part of an offer or contract. No Winkworth employee has authority to make or give any representation or warranty in relation to this property. All fixtures and fittings, whether fitted or not are deemed removable by the vendor unless stated otherwise and room sizes are measured between internal wall surfaces, including furnishings.

