



FARRINGDON ROAD, LONDON, EC1R
£450,000 SHARE OF FREEHOLD

A BRIGHT ONE BEDROOM FLAT ARRANGED ON THE
FIRST FLOOR OF A MID-TERRACE VICTORIAN TOWN
HOUSE.

Clerkenwell | 020 7405 1288 | clerkenwell@winkworth.co.uk

Winkworth

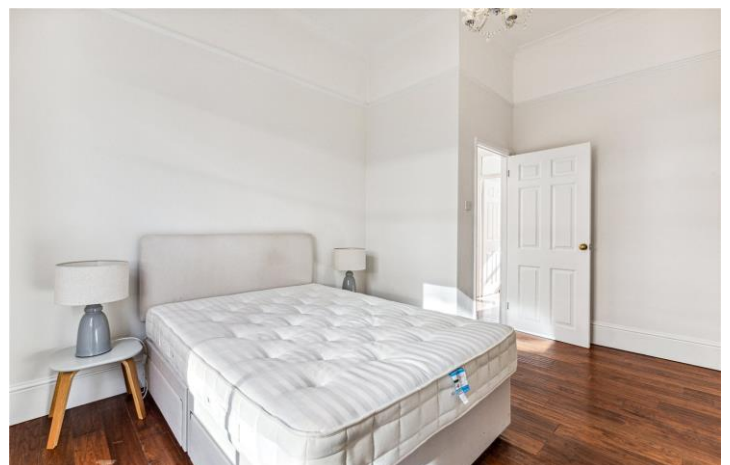
for every step...

winkworth.co.uk



DESCRIPTION:

The property is well presented and comprises large reception and modern fitted kitchen, wood floors, original sash windows, double bedroom, and modern fitted bathroom. The property is located near the crossroad of Farringdon Road and Rosebery Avenue, just a minute walk from the famous Exmouth Market. Farringdon underground station is a short walk from the building. Due to its strategic position within walking distance, it is possible to reach the Law Quarter of Chancery Lane, the City of London, the West End, Bloomsbury, Islington, and Old Street.



Winkworth

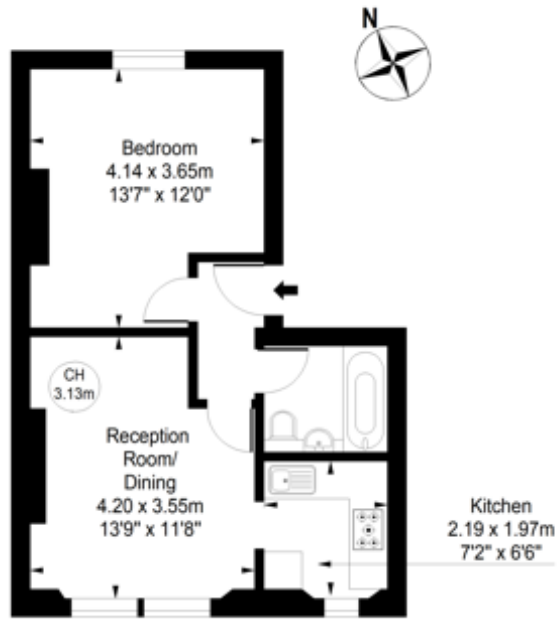
for every step...



Winkworth

for every step...

Farringdon Road, EC1R

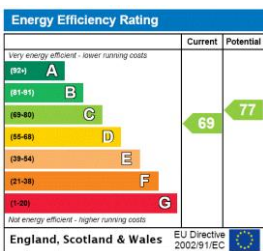


First Floor

Approx Gross Internal Area 420 Sq Ft - 39.02 Sq M

Not to scale, for guidance only and must not be relied upon as a statement of fact.
All measurements and areas are approximate only

This floorplan is for illustration purposes only and is not to scale. The position and size of doors, windows, appliances and other features are approximate.



Tenure: Share of Freehold
Term: N/A
Service Charge: Approx. £563 per annum
Ground Rent: N/A
Council Tax Band: Islington C

Where no figures are shown, we have been unable to ascertain the information. All figures that are shown were correct at the time of printing.

Clerkenwell & City | 020 7405 1288 | westend@winkworth.co.uk

Winkworth

for every step...

winkworth.co.uk

Winkworth wishes to inform prospective buyers and tenants that these particulars are a guide and act as information only. All our details are given in good faith and believed to be correct at the time of printing but they don't form part of an offer or contract. No Winkworth employee has authority to make or give any representation or warranty in relation to this property. All fixtures and fittings, whether fitted or not are deemed removable by the vendor unless stated otherwise and room sizes are measured between internal wall surfaces, including furnishings.