

Winkworth

Wimbledon Park Road, London, SW18 5SH





A smart two bedroom flat situated on the first floor of this impressive period building in Southfields. Offered to the market with no onward chain, the property benefits from a bright reception room leading through to a separate fitted kitchen. The two bedrooms are serviced by a bathroom with white suite. To the rear of the building is a large shared garden.

Wimbledon Park Road is superbly located close to the variety of shops, bars and restaurants in Southfields. The nearest station is Southfields Underground Station (District Line) which offers links to Waterloo Station and Victoria Station, with excellent bus links also nearby. Numerous green spaces are also within easy reach with King George's Park and Wimbledon Park close by.

- Period Flat
- Bright Reception Room
- Separate Kitchen
- Two Bedrooms
- Large Shared Garden
- No Onward Chain
- Share of Freehold

Wimbledon Park Road, London, SW18 5SH



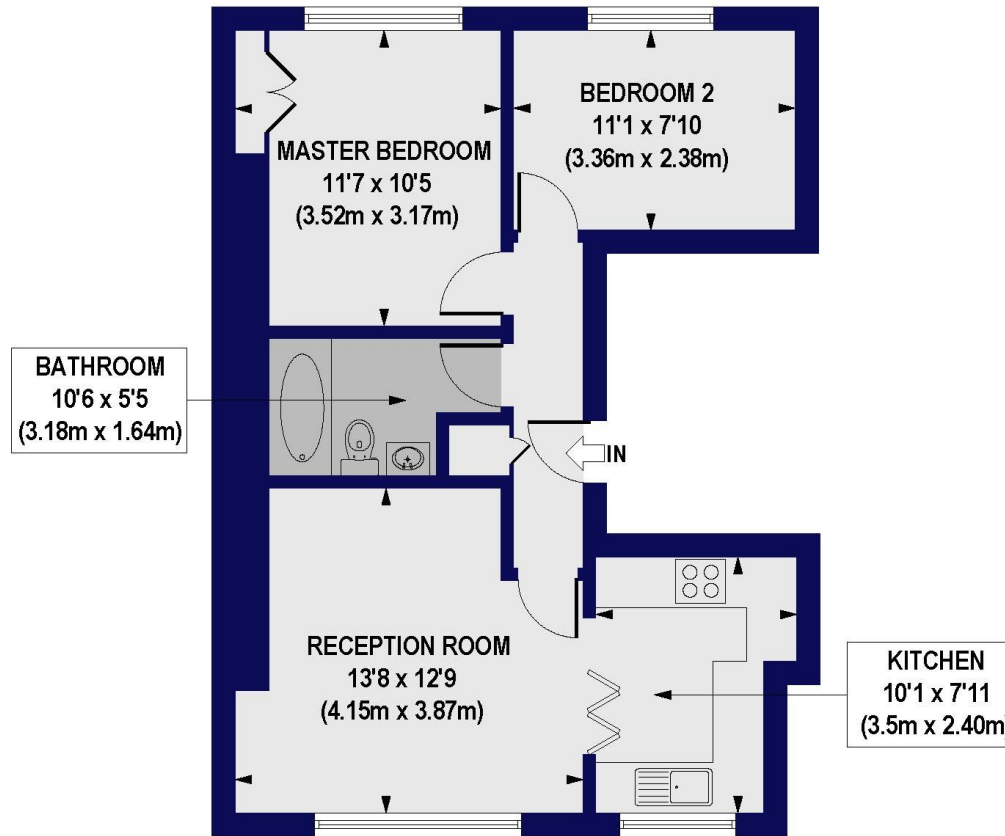
Energy Efficiency Rating		Current	Potential
Very energy efficient - lower running costs			
(92-)	A		
(81-91)	B		82
(69-80)	C	71	
(55-68)	D		
(39-54)	E		
(21-38)	F		
(1-20)	G		
Not energy efficient - higher running costs			
England, Scotland & Wales		EU Directive 2002/91/EC	

Share of Freehold

Internal area
Approximate gross internal area:
Total 556 sq ft/ 51.68 sq m

Wimbledon Park Road, SW18

Approx. Gross Internal Floor Area 556 sq. ft / 51.68 sq. m



FIRST FLOOR

All measurements of walls, doors, windows, fittings and appliances, including their size and location, are shown as standard sizes and do not constitute any warranty or representation by the seller, their agent or CP Creative. Any intending purchaser must satisfy himself by inspection or otherwise as to the correctness of the information contained in these plans. This plan is for illustrative purposes only and should be used as such by any prospective purchasers.

Winkworth

W621 Ravensworth 01670 713330

Winkworth

Under the Property Misdescriptions Act these particulars are intended as a guide and act as information only. They give a fair overall description for the guidance of potential purchasers or tenants but do not constitute an offer or part of a contract. All details and approximate measurements are given in good faith and are believed to be correct at the time of printing, but any potential purchasers or tenants should not rely on the mis-statements or representations of fact but must satisfy themselves by inspection or otherwise as to their correctness. No employee of Winkworth has authority to make or give any representation or warranty to this property.

Southfields office 241 Wimbledon Park Road, London SW18 5RJ | Tel: 0208 877 1000 | E-mail: Southfields@winkworth.co.uk
winkworth.co.uk