



DAWSON PLACE, W2
£575,000 SHARE OF FREEHOLD

**A WELL PRESENTED ONE DOUBLE BEDROOM FLAT ON
THE RAISED GROUND FLOOR OF THIS PERIOD BUILDING.**

Notting Hill Sales | 0207 727 3227 | nottinghill@winkworth.co.uk

Winkworth

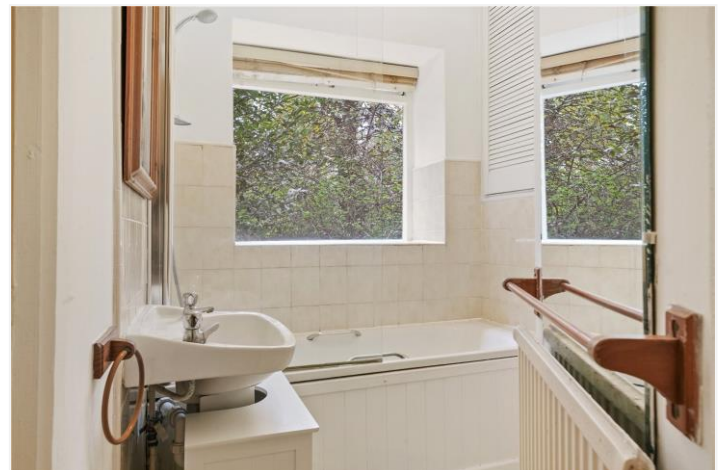
for every step...

winkworth.co.uk



DESCRIPTION:

A gorgeous and well-presented one double bedroom flat on the raised ground floor of this period building. The flat boasts an en-suite bathroom and separate second WC for guests, separate kitchen, lovely original stripped wood floors in the reception room, fantastic high ceilings with cornicing and a period fireplace which adds to the flats overall charm.



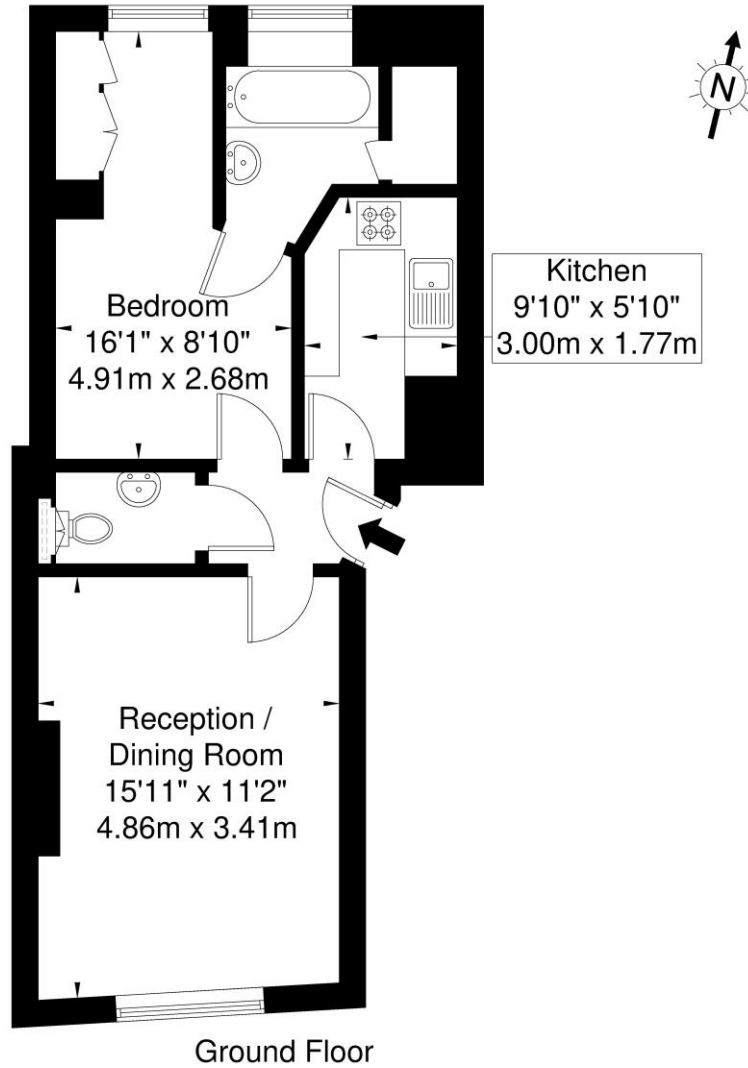


LOCATION:

Dawson Place is one of Notting Hill's finest roads - a residential street of imposing stucco fronted villas running west from Pembridge Villas, well placed between and short walk from the amenities of Notting Hill Gate and the boutiques and restaurants of Westbourne Grove.

Dawson Place, W2 4TJ

Approx Gross Internal Area = 43.8 sq m / 471 sq ft



Ground Floor

Ref

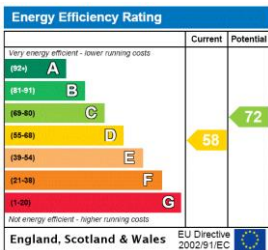
Copyright

**B L E U
P L A N**

The Floor plan is not to scale and measurements and areas shown are approximate and therefore should be used for illustrative purposes only. The plan has been prepared in accordance with the RICS code of Measuring Practice and whilst we have confidence in the information produced it must not be relied on. If there is any aspect of particular importance, you should carry out or commission your own inspection of the property.

Copyright @ BLEUPLAN

This floorplan is for illustration purposes only and is not to scale. The position and size of doors, windows, appliances and other features are approximate.



Utilities:

- Gas – Mains
- Electricity – Mains
- Waste – Mains Sewerage
- Water – Mains
- Broadband – Fiber

Tenure:

Share of Freehold

Term:

995 years remaining

Service Charge:

£1200 per annum

Ground Rent:

Peppercorn per annum

Council Tax Band:

Band D (City of Westminster)

Where no figures are shown, we have been unable to ascertain the information. All figures that are shown were correct at the time of printing.

Notting Hill Sales | 0207 727 3227 | nottinghill@winkworth.co.uk

Winkworth

for every step...

winkworth.co.uk

Winkworth wishes to inform prospective buyers and tenants that these particulars are a guide and act as information only. All our details are given in good faith and believed to be correct at the time of printing but they don't form part of an offer or contract. No Winkworth employee has authority to make or give any representation or warranty in relation to this property. All fixtures and fittings, whether fitted or not are deemed removable by the vendor unless stated otherwise and room sizes are measured between internal wall surfaces, including furnishings.