



CHASEFIELD ROAD, SW17  
**£1,000,000 FREEHOLD**

## A SPECTACULAR AND WELL PRESENTED FOUR BEDROOM FAMILY HOME

Tooting | 020 8767 5221 | [tooting@winkworth.co.uk](mailto:tooting@winkworth.co.uk)

**Winkworth**

for every step...

[winkworth.co.uk](http://winkworth.co.uk)



### **DESCRIPTION:**

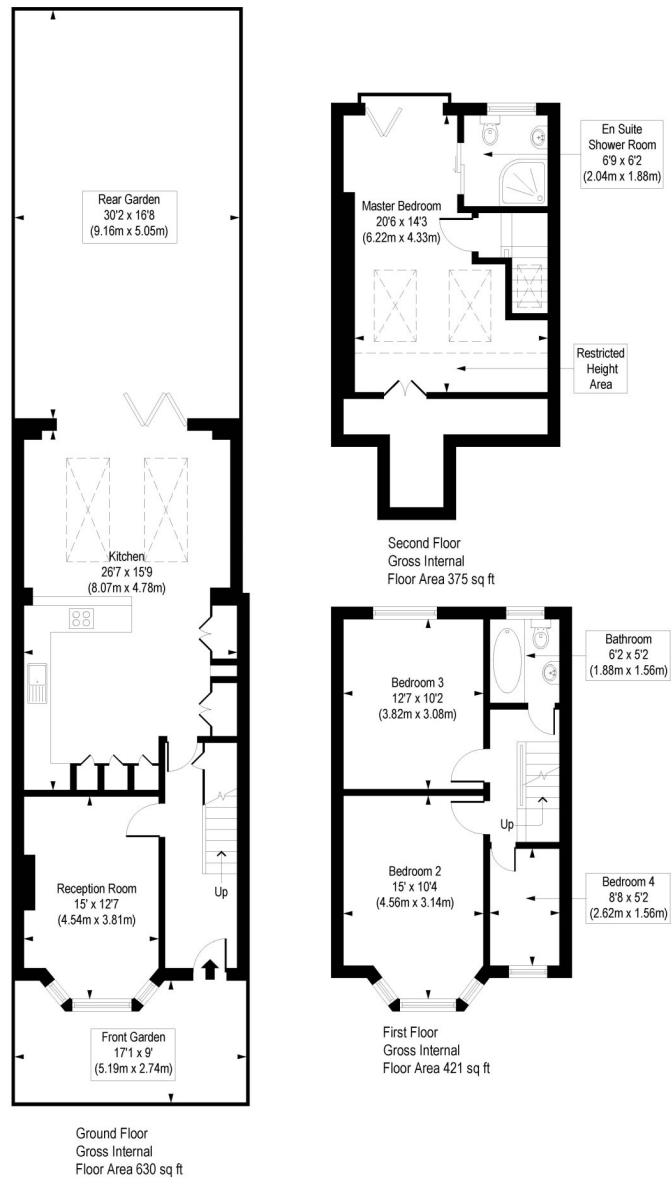
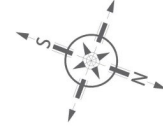
A spectacular four-bedroom family home that has been tastefully decorated and extended fully. This stunning period house offers a beautiful blend of modern living and period features throughout. Upon entering the house via the front garden, you will find a beautiful entrance hall with stained glass front door and intricate cornicing that leads into the formal reception room which has a stunning focal fireplace and bay window. To the rear you will find a stunning kitchen which boasts integral appliances and further reception/dining area with bi folding doors which leads the way through to the tranquil south west facing garden. The rear garden has a real sense of privacy. On the first floor you will find two double bedrooms, large single bedroom and a modern family bathroom. The second floor houses the master bedroom which offer views across the skyline via the Juliet balcony and a large en-suite shower room.

Chasefield Road is ideally positioned for access in and out of Central London, as well as providing easy access to both Tooting underground (Northern Line) and Tooting overground stations. The shopping, dining and entertainment facilities of Tooting high street are within a short distance including the famous Tooting Markets. The properties location further benefits from being within a short walk of Tooting Bec Common. The house is future-proofed and would make a fantastic family home for decades to come.



# Chasefield Road, SW17

Approx. Gross Internal Area 1315 sq. ft / 122.13 sq. m (Excluding Restricted Height Area)  
Approx. Gross Internal Area 1426 sq. ft / 132.49 sq. m (Including Restricted Height Area)



COMPLIANT WITH RICS CODE OF MEASURING PRACTICE. Floorplan is for illustrative purposes only and is not to scale. Every attempt has been made to ensure the accuracy of the floorplan shown, however all measurements, fixtures, fittings and data shown are an approximate interpretation for illustrative purposes only. Liability for errors, omissions or mis-statement through negligence or otherwise is hereby excluded.

This floorplan is for illustration purposes only and is not to scale. The position and size of doors, windows, appliances and other features are approximate.

Tooting | 020 8767 5221 | tooting@winkworth.co.uk

# Winkworth

for every step...

[winkworth.co.uk](http://winkworth.co.uk)

Winkworth wishes to inform prospective buyers and tenants that these particulars are a guide and act as information only. All our details are given in good faith and believed to be correct at the time of printing but they don't form part of an offer or contract. No Winkworth employee has authority to make or give any representation or warranty in relation to this property. All fixtures and fittings, whether fitted or not are deemed removable by the vendor unless stated otherwise and room sizes are measured between internal wall surfaces, including furnishings.