



COLERIDGE WAY, HERTFORDSHIRE, WD6
£625,000 FREEHOLD

THREE BEDROOM TOWNHOUSE WITH TWO PARKING SPACES IN SOUTH BOREHAMWOOD

Borehamwood | 020 8953 8899 | borehamwood@winkworth.co.uk



Winkworth

DESCRIPTION:

Arranged over three floors, this well presented family home comprises, open plan kitchen/dining and living area, guest wc and access to the rear garden on the ground floor. On the first floor there is a further reception room and the third bedroom, moving onto the second floor there is a further two bedrooms, with ensuite to the master bedroom and additional family bathroom. The rear garden has a patio area leading onto the lawn. The driveway to front has space for two cars.

Coleridge Way is ideally located for easy access to Elstree & Borehamwood Thameslink line, giving you direct access into London in around 20mins.

AT A GLANCE

- Three Bedrooms
- South Borehamwood
- Two Receptions
- Two Bathrooms
- 1212 Square Feet
- South Westerly Facing Garden
- Off Street Parking



Winkworth



Winkworth



Winkworth



Winkworth



Winkworth



Winkworth



Winkworth

Approximate Gross Internal Area = 112.6 sq m / 1212 sq ft

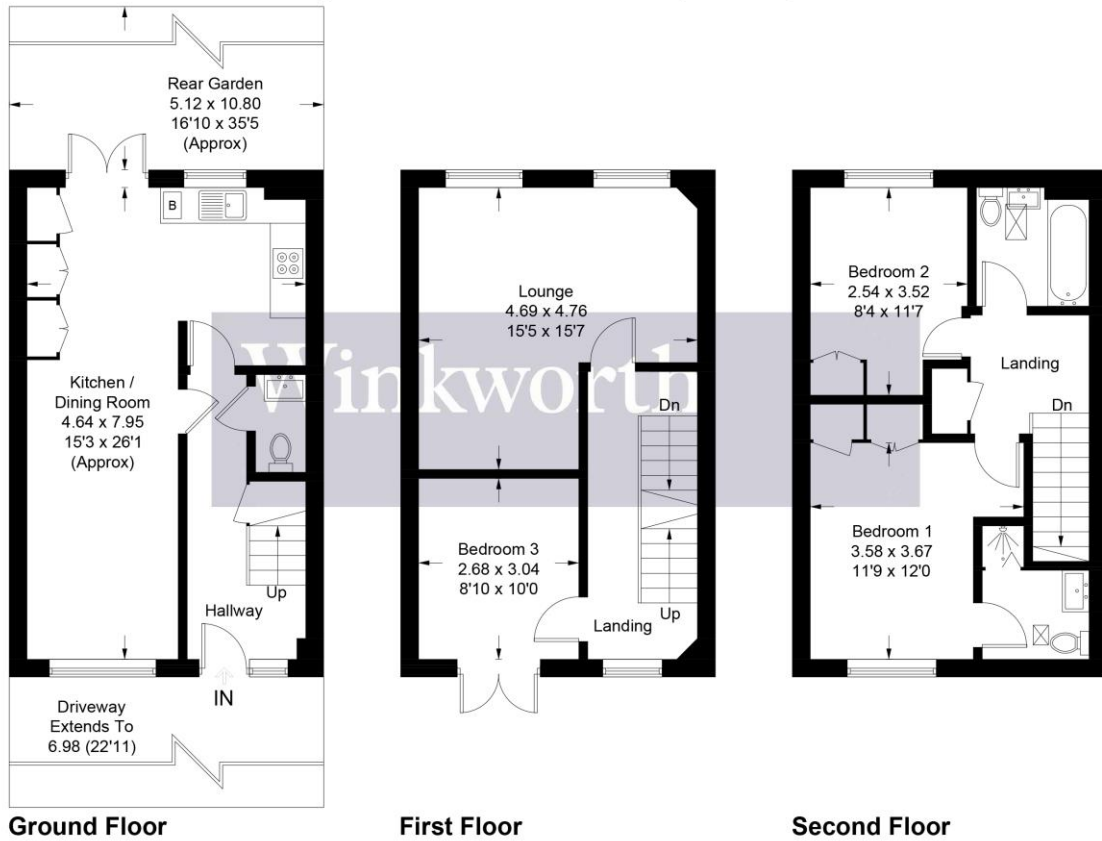


Illustration for identification purposes only, measurements are approximate, not to scale. Winkworth © 2023 (ID955516)

This floorplan is for illustration purposes only and is not to scale. The position and size of doors, windows, appliances and other features are approximate.

