



DEESIDE ROAD, SW17
£725,000 FREEHOLD

FOUR BEDROOM FAMILY HOME LOCATED BETWEEN TOOTING AND EARLSFIELD

Tooting | 020 8767 5221 | tooting@winkworth.co.uk

Winkworth

for every step...

winkworth.co.uk



DESCRIPTION:

A peacefully located end terrace four double bedroom family house.

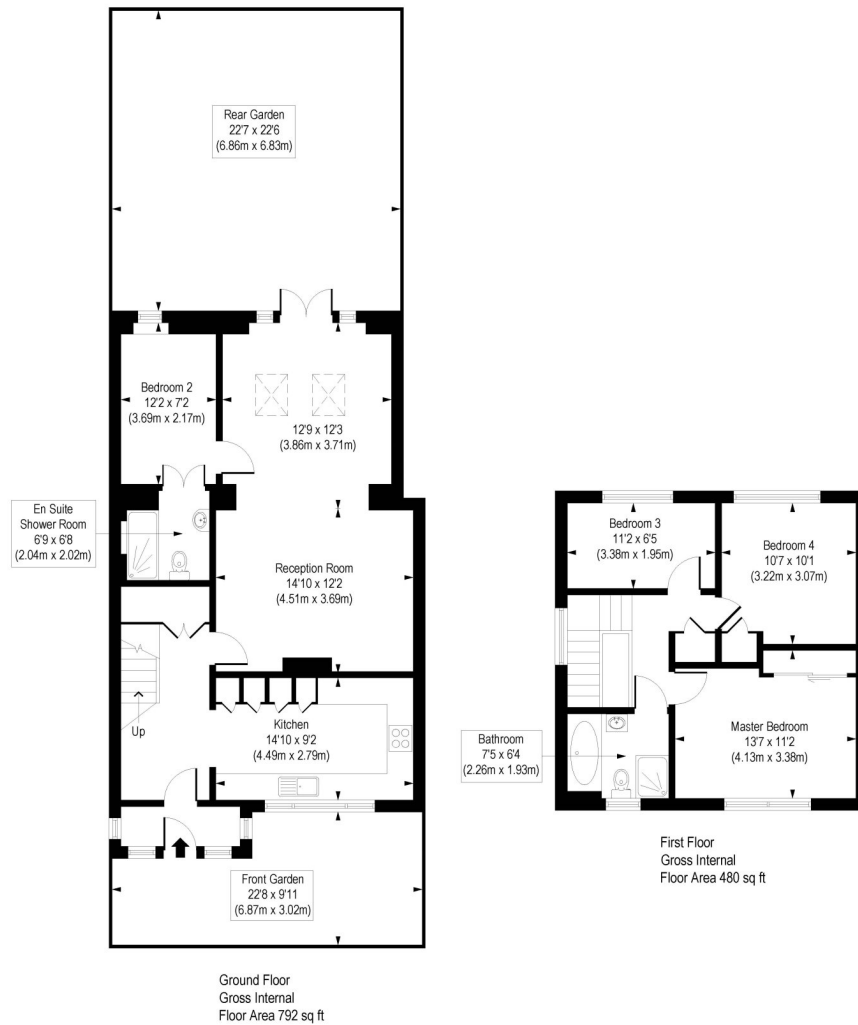
This four bedroom end terrace house has a large modern fitted kitchen to the front of the property. A spacious open plan living and dining room to the back . The property has been extended on the ground floor to facilitate a bedroom and a family bathroom. There is a also a private garden to the rear which has been paved and boasts a large shed.

On the first floor there are three generous bedroom as well as a family bathroom.



Deeside Road, SW17

Approx. Gross Internal Floor Area 1272 sq. ft / 118.17 sq. m



COMPLIANT WITH RICS CODE OF MEASURING PRACTICE. Floorplan is for illustrative purposes only and is not to scale. Every attempt has been made to ensure the accuracy of the floorplan shown, however all measurements, fixtures, fittings and data shown are an approximate interpretation for illustrative purposes only. Liability for errors, omissions or mis-statement through negligence or otherwise is hereby excluded.

This floorplan is for illustration purposes only and is not to scale. The position and size of doors, windows, appliances and other features are approximate.

Tooting | 020 8767 5221 | tooting@winkworth.co.uk

Winkworth

for every step...

winkworth.co.uk

Winkworth wishes to inform prospective buyers and tenants that these particulars are a guide and act as information only. All our details are given in good faith and believed to be correct at the time of printing but they don't form part of an offer or contract. No Winkworth employee has authority to make or give any representation or warranty in relation to this property. All fixtures and fittings, whether fitted or not are deemed removable by the vendor unless stated otherwise and room sizes are measured between internal wall surfaces, including furnishings.