



ANTHIAN CLOSE, READING, BERKSHIRE, RG5 4XA
£3,850 PER MONTH FURNISHED

**SIX BEDROOM DETACHED HOUSE LOCATED
AT WOODLEY AIRFIELD. AVAILABLE 1ST
JULY.**

Reading | 0118 4022 300 | reading@winkworth.co.uk

Winkworth

for every step...

winkworth.co.uk



DESCRIPTION:

Large six bedroom detached house located on a highly sought after cul-de-sac at Woodley Airfield. The property comprises living room, separate dining room, downstairs cloakroom, kitchen, utility room and large study/family room on the ground floor. To the first floor there are four bedrooms, en suite shower to the master bedroom and a further three piece bathroom. Two further bedrooms and a bathroom occupy the top floor. Additional benefits include detached double garage, private rear garden and driveway parking. Available 1st July 2024. Furnished.

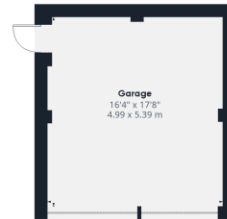
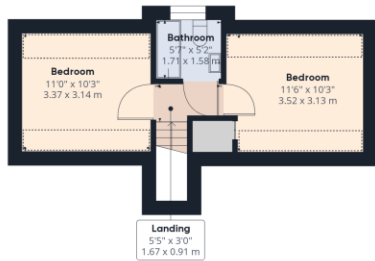
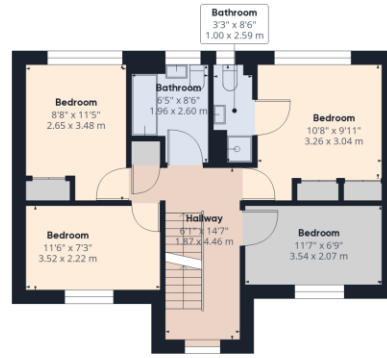
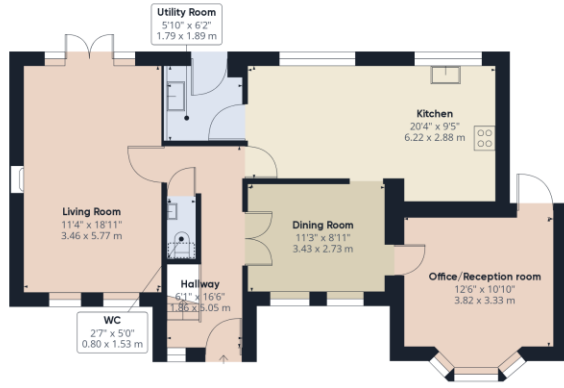
Anthian Close is within easy reach of Woodley Church of England Primary School, Waingels College, Dinton Pastures Country Park, Woodley shopping precinct whilst and also provides excellent access to the A329M and the M4 (Junction 10).

AT A GLANCE

- Six bedroom detached house
- Quiet cul-de-sac location
- Driveway & double garage
- Three bathrooms
- Council tax band F
- Available 1st July
- Furnished







Approximate total area⁽¹⁾
1985.26 ft²
184.44 m²

Reduced headroom
85.42 ft²
7.94 m²

(1) Excluding balconies and terraces

☒ Reduced headroom (below 1.5m/4.92ft)

While every attempt has been made to ensure accuracy, all measurements are approximate, not to scale. This floor plan is for illustrative purposes only.

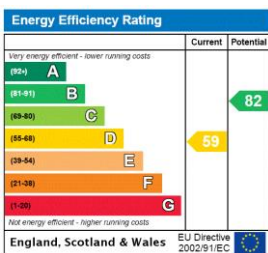
GIRAFFE360

This floorplan is for illustration purposes only and is not to scale. The position and size of doors, windows, appliances and other features are approximate.

Deposit: £4,442.31

Council Tax Band:F

Where no figures are shown, we have been unable to ascertain the information. All figures that are shown were correct at the time of printing.



Reading | 0118 4022 300 | reading@winkworth.co.uk

Winkworth

for every step...

winkworth.co.uk

Winkworth wishes to inform prospective buyers and tenants that these particulars are a guide and act as information only. All our details are given in good faith and believed to be correct at the time of printing but they don't form part of an offer or contract. No Winkworth employee has authority to make or give any representation or warranty in relation to this property. All fixtures and fittings, whether fitted or not are deemed removable by the vendor unless stated otherwise and room sizes are measured between internal wall surfaces, including furnishings.