



## Cromwell Mews, South Kensington, London, SW7

£550 per week – Unfurnished

A charming, newly refurbished one bedroom flat on this quiet cobbled mews, moments from South Kensington.

1 Bedroom | 1 Reception Room | 1 Bathroom | First Floor Flat | 458 Approx sq ft | EPC: D

APPLICANT FEES MAY BE APPLICABLE  
DEPOSIT OF 5 WEEKS' RENT

**Winkworth**



## DESCRIPTION

This wonderfully bright flat is arranged over the first floor of this period building and benefits from its own front door at ground level.

Recently renovated throughout, the property features a well-proportioned reception room, modern kitchen and bathroom, and spacious bedroom with built-in wardrobes.

The flat is available immediately on an unfurnished basis.



## ACCOMMODATION

1 Bedroom, 1 Reception Room,  
1 Bathroom, First Floor Flat,  
Unfurnished, 458 Approx Sq ft

## COUNCIL TAX BAND

Band E

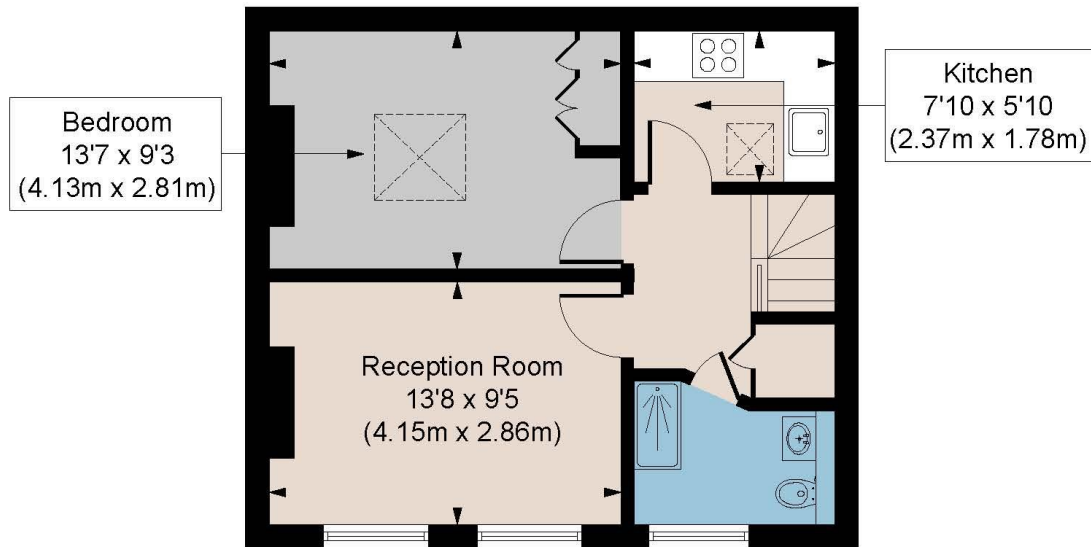
Energy Efficiency Rating		Current	Potential
Very energy efficient - lower running costs			
(92+)	<b>A</b>		
(81-91)	<b>B</b>		<b>84</b>
(69-80)	<b>C</b>		
(55-68)	<b>D</b>	<b>59</b>	
(39-54)	<b>E</b>		
(21-38)	<b>F</b>		
(1-20)	<b>G</b>		
Not energy efficient - higher running costs			
England, Scotland & Wales		EU Directive 2002/91/EC	

# CROMWELL MEWS SW7

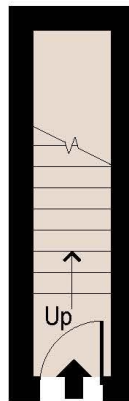
APPROX. GROSS INTERNAL AREA \*  
458 Ft<sup>2</sup> - 42.58 M<sup>2</sup>

Illustration For Identification Only, Not to Scale  
All Calculations include Any/All Areas Under 1.5m Head Height.

\* As Defined by RICS - Code of Measuring Practice



FIRST FLOOR



GROUND FLOOR

Floorplan is for illustrative purposes only and is not to scale. Every attempt has been made to ensure the accuracy of the floorplan shown, however all measurements, fixtures, fittings and data shown are an approximate interpretation for illustrative purposes only. Liability for errors, omissions or mis-statement through negligence or otherwise is hereby excluded.

**CP CREATIVE**  
PROPERTY MARKETING

*This floorplan is for illustration purposes only and is not to scale. The position and size of doors, windows, appliances and other features are approximate.*

South Kensington Lettings | 020 7370 6767 | [lettings.southken@winkworth.co.uk](mailto:lettings.southken@winkworth.co.uk)

[winkworth.co.uk](http://winkworth.co.uk)



for every step...

Winkworth wishes to inform prospective buyers and tenants that these particulars are a guide and act as information only. All our details are given in good faith and believed to be correct at the time of printing but they don't form part of an offer or contract. No Winkworth employee has authority to make or give any representation or warranty in relation to this property. All fixtures and fittings, whether fitted or not are deemed removable by the vendor unless stated otherwise and room sizes are measured between internal wall surfaces, including furnishings.