



SHELLEY CLOSE, HERTFORDSHIRE, WD6
£540,000 FREEHOLD

TWO BEDROOM END OF TERRACE HOUSE WITH TWO ALLOCATED PARKING

Borehamwood | 020 8953 8899 | borehamwood@winkworth.co.uk



DESCRIPTION:

A well-presented end of terrace house, located on a popular modern development in Borehamwood. The property comprises, re-fitted kitchen with built under oven, electric hob and extractor over, lounge/diner with patio doors leading onto a low maintenance rear garden. Guest WC/ utility room with plumbing for washing machine. Upstairs there are two double bedrooms, and a family bathroom. Benefits include two allocated parking spaces, and the option to extend to the rear and into the loft, subject to usual planning consent.

Ideally located for easy access to Elstree & Borehamwood main line station, providing access into London in around 20 mins, plus the town centre with an array of shops and restaurants.

AT A GLANCE

- 2 Bedrooms
- Entrance Hall
- Guest Wc/ Utility Room
- Kitchen
- Lounge/Diner
- Bathroom
- Two Allocated Parking Spaces
- Garden





Winkworth



Winkworth

Approximate Gross Internal Area = 68 sq m / 731 sq ft

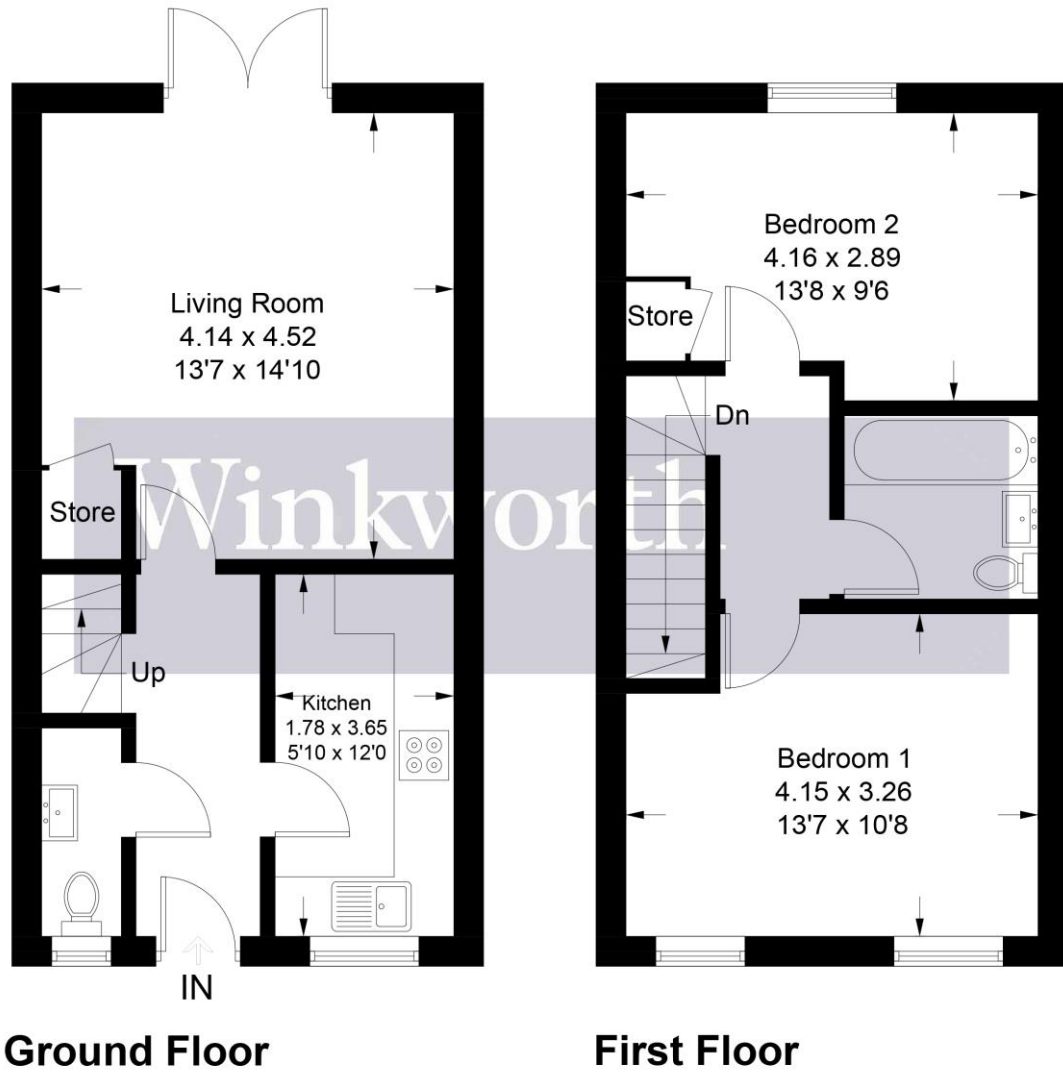


Illustration for identification purposes only, measurements are approximate, not to scale. Winkworth © 2023 (ID956940)

This floorplan is for illustration purposes only and is not to scale. The position and size of doors, windows, appliances and other features are approximate.

