



BARRY ROAD, EAST DULWICH, SE22
£650,000 SHARE OF FREEHOLD

**THIS EXCELLENT TWO DOUBLE-BEDROOM
GARDEN MAISONETTE IS SITUATED IN A
CENTRAL EAST DULWICH LOCATION.**

Dulwich | 020 8299 2722 | dulwich@winkworth.co.uk

Winkworth

winkworth.co.uk

See things differently



DESCRIPTION:

This excellent two double-bedroom garden maisonette is situated in a central East Dulwich location, close to Lordship Lane and Peckham Rye Park. The property offers an open-plan kitchen living, two double bedrooms, a modern bathroom, and direct access to an extremely large, private garden to the rear. The property is situated between Peckham Rye Park and Dulwich Park on Barry Road. School catchments are in abundance with Goodrich, Harris, and Heber to name a few. Transport links can be easily found via multiple bus links on Barry Road with local routes and into the capital. A short walk to East Dulwich station allows direct train links to London Bridge. A short bus journey to either Honor Oak Park or Peckham Rye for the Overground.

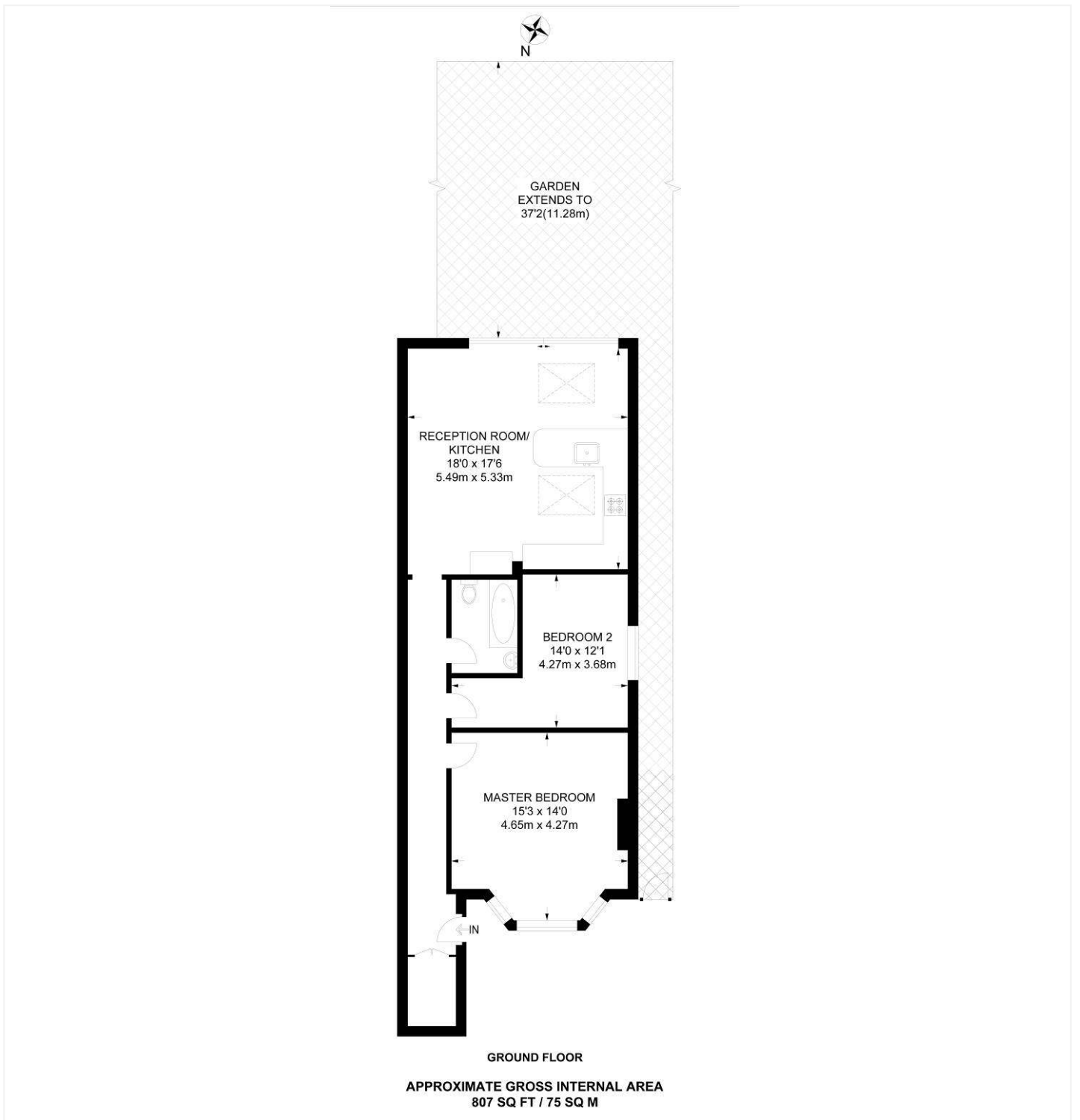
Council Tax Band B

AT A GLANCE

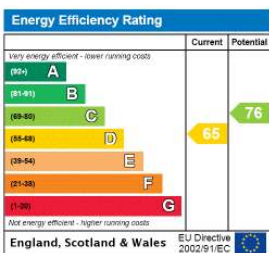
- Two Double Bedrooms
- Ground Floor Maisonette
- Open-Plan Kitchen-Living
- Modern Bathroom
- Private Garden
- Close To Dulwich Park & Peckham Rye Park







This floorplan is for illustration purposes only and is not to scale. The position and size of doors, windows, appliances and other features are approximate.



Dulwich | 020 8299 2722 | dulwich@winkworth.co.uk



winkworth.co.uk

See things differently

Winkworth wishes to inform prospective buyers and tenants that these particulars are a guide and act as information only. All our details are given in good faith and believed to be correct at the time of printing but they don't form part of an offer or contract. No Winkworth employee has authority to make or give any representation or warranty in relation to this property. All fixtures and fittings, whether fitted or not are deemed removable by the vendor unless stated otherwise and room sizes are measured between internal wall surfaces, including furnishings.