



**8A Golf Links Road**  
Ferndown BH22 8BY  
**Guide Price £600,000**

**Winkworth**



**GUIDE PRICE £600,000  
FREEHOLD**

**This immaculately presented three bedroom, two bathroom detached bungalow is tucked away in a secluded location on one of the area's most sought after residential roads.**

**This lovely property has been maintained to an exceptional standard throughout and is perfect for those looking to downsize to a spacious bungalow in a premier location, close to the coast. Further benefitting from a double garage with electric doors, off road parking and no onward chain.**

Detached Bungalow  
Immaculate Throughout  
Pretty Front and Rear Gardens  
En-suite Bedroom  
Patio Doors From Lounge Onto Front Garden  
Kitchen/Breakfast Room  
Integral Double Garage With Electric Doors & Boarded Loft With Ladder  
Water Softener  
Off Road Parking For Several Vehicles  
Sought After Location  
Perfect For Downsizees

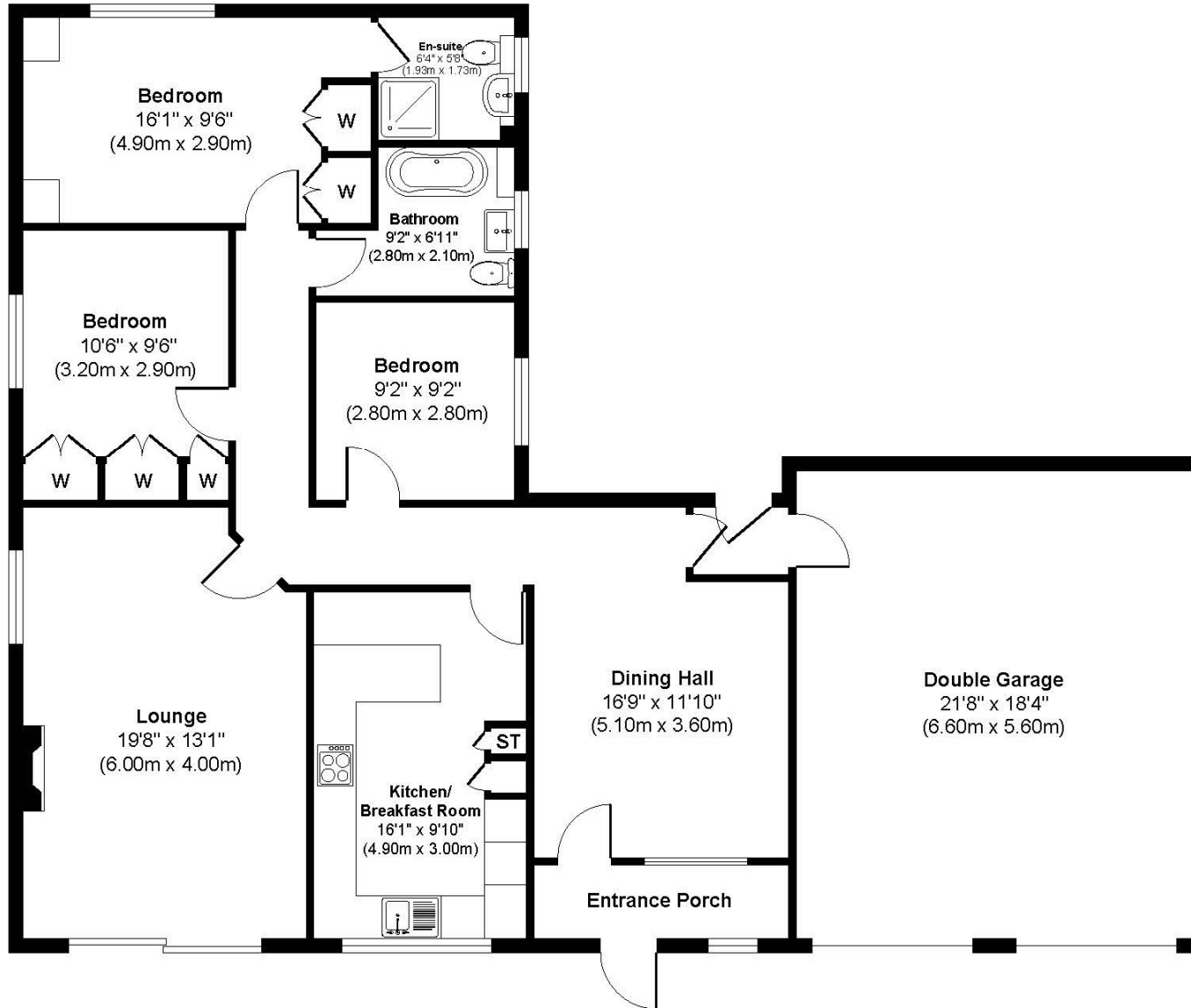
EPC D | Council Tax Band F

01202 434365  
ferndown@winkworth.co.uk









**Approx. Gross Internal Floor Area 1628 sq. ft / 151.22 sq. m**

Illustration for identification purposes only, measurements approximate and not to scale, unauthorized reproduction is prohibited

**Golf links Road**



## LOCATION

Positioned on Golf Links Road, which is a very desirable residential location, just moments from Ferndown championship Golf Course. The town centre is within a short walk and has a range of shops, cafes and amenities including an M&S Foodhall. There are bus routes nearby giving you easy access to Bournemouth, Poole and Wimborne, all of which have an excellent range of shops, restaurants and leisure facilities. Award winning beaches are just twenty minutes away and the A31 provides quick access to the New Forest, Southampton, London and beyond for the commuter by car.

## Winkworth Ferndown

406 Ringwood Road, Ferndown, Dorset, BH22 9AU

01202 434365 | [ferndown@winkworth.co.uk](mailto:ferndown@winkworth.co.uk)

[winkworth.co.uk/ferndown](http://winkworth.co.uk/ferndown)

**Winkworth**