



BELMONT ROAD, BERKSHIRE, RG30 2UU
£850 PER MONTH UNFURNISHED

ONE BEDROOM FIRST FLOOR APARTMENT IN WEST READING WITH EASY ACCESS TO THE TOWN CENTRE

Reading | 0118 4022 300 | reading@winkworth.co.uk

Winkworth

for every step...

winkworth.co.uk



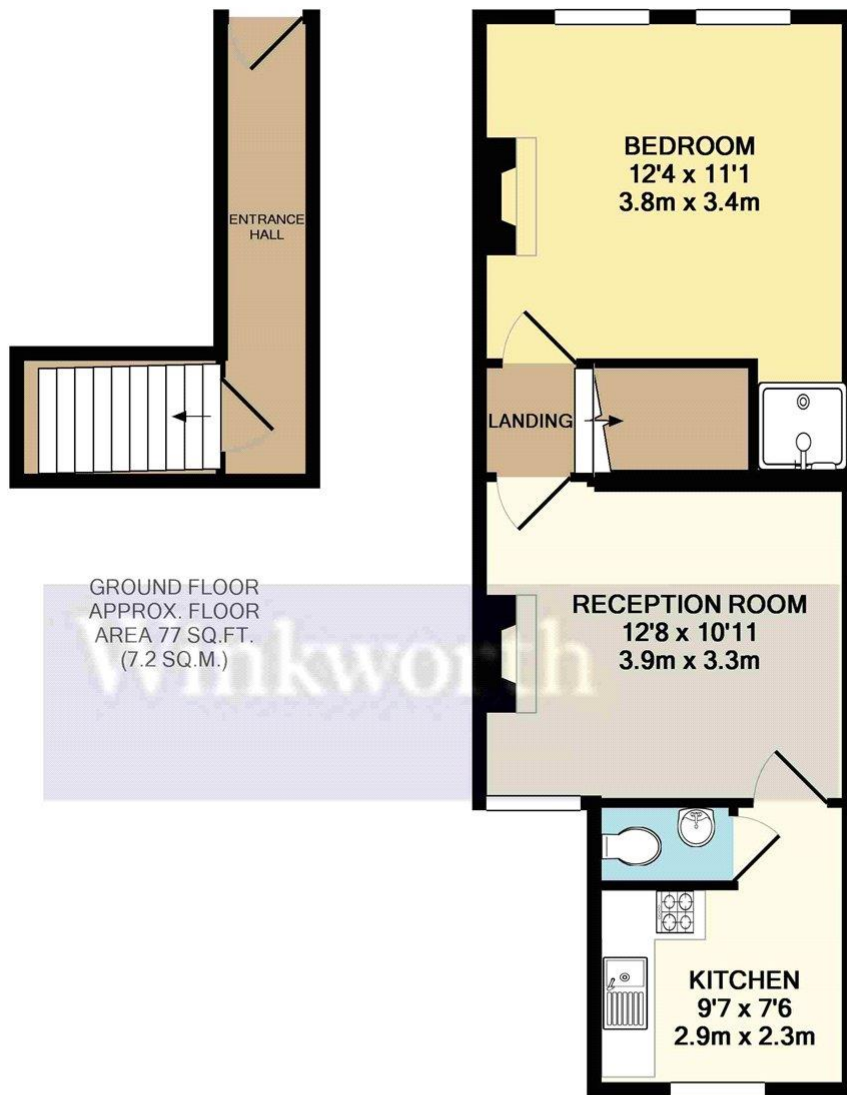
DESCRIPTION:

One bedroom first floor apartment in a Victorian terrace conversion located a mile from Reading town centre and within a short walk of Reading West train station. Accommodation comprises; a spacious lounge, kitchen with appliances, double bedroom and cloakroom. The shower is located off of the bedroom. On road permit parking available. Unfurnished (apart from a sofa & white goods provided). Available 6th June 2024.

AT A GLANCE

- One bedroom apartment
- First floor
- Council tax band A
- Permit on road parking is subject to availability through Reading Borough Council
- Available 6th June
- Unfurnished
- SINGLE OCCUPANTS ONLY





GROUND FLOOR
APPROX. FLOOR
AREA 77 SQ.FT.
(7.2 SQ.M.)

1ST FLOOR
APPROX. FLOOR
AREA 404 SQ.FT.
(37.5 SQ.M.)

TOTAL APPROX. FLOOR AREA 481 SQ.FT. (44.7 SQ.M.)

Whilst every attempt has been made to ensure the accuracy of the floor plan contained here, measurements of doors, windows, rooms and any other items are approximate and no responsibility is taken for any error, omission, or mis-statement. This plan is for illustrative purposes only and should be used as such by any prospective purchaser. The services, systems and appliances shown have not been tested and no guarantee as to their operability or efficiency can be given
Made with Metropix ©2018

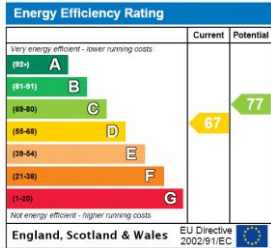
This floorplan is for illustration purposes only and is not to scale. The position and size of doors, windows, appliances and other features are approximate.

Deposit: £980.77

Holding Deposit:

Council Tax Band: A

Where no figures are shown, we have been unable to ascertain the information. All figures that are shown were correct at the time of printing.



Reading | 0118 4022 300 | reading@winkworth.co.uk



for every step...

winkworth.co.uk

Winkworth wishes to inform prospective buyers and tenants that these particulars are a guide and act as information only. All our details are given in good faith and believed to be correct at the time of printing but they don't form part of an offer or contract. No Winkworth employee has authority to make or give any representation or warranty in relation to this property. All fixtures and fittings, whether fitted or not are deemed removable by the vendor unless stated otherwise and room sizes are measured between internal wall surfaces, including furnishings.