

BUCHANAN GARDENS, LONDON, NW10
£1,875,000 FREEHOLD

WINKWORTH ARE DELIGHTED TO BRING TO MARKET THIS
EXCEPTIONAL FAMILY HOME, DIRECTLY OVERLOOKING ELMWOOD
TENNIS CLUB ON BUCHANAN GARDENS.

Kensal & Queens Park | 0208 960 4947 | kensalrise@winkworth.co.uk



winkworth.co.uk

See things differently



LOCATION: This property on Buchanan Gardens is ideally situated to take advantage of the amenities on College Road which include L'Anglo's Italian Deli, The Island Pub and Restaurant and the new Morty and Bob's Cafe which is creating a bit of a storm. If it is green spaces you're after then the property is equidistant from Roundwood Park or Queens Park. For tennis lovers Elmwood Tennis Club is directly opposite and also offers pleasant views over the courts and gardens. Transport links are within 1/4 mile from the front door at Kensal Green station which is on the Bakerloo line and the London Overground. Another branch of the London Overground is situated at Kensal Rise station with is also a short distance away. The property is also in the catchment for the highly sought after Princess Frederica's school.

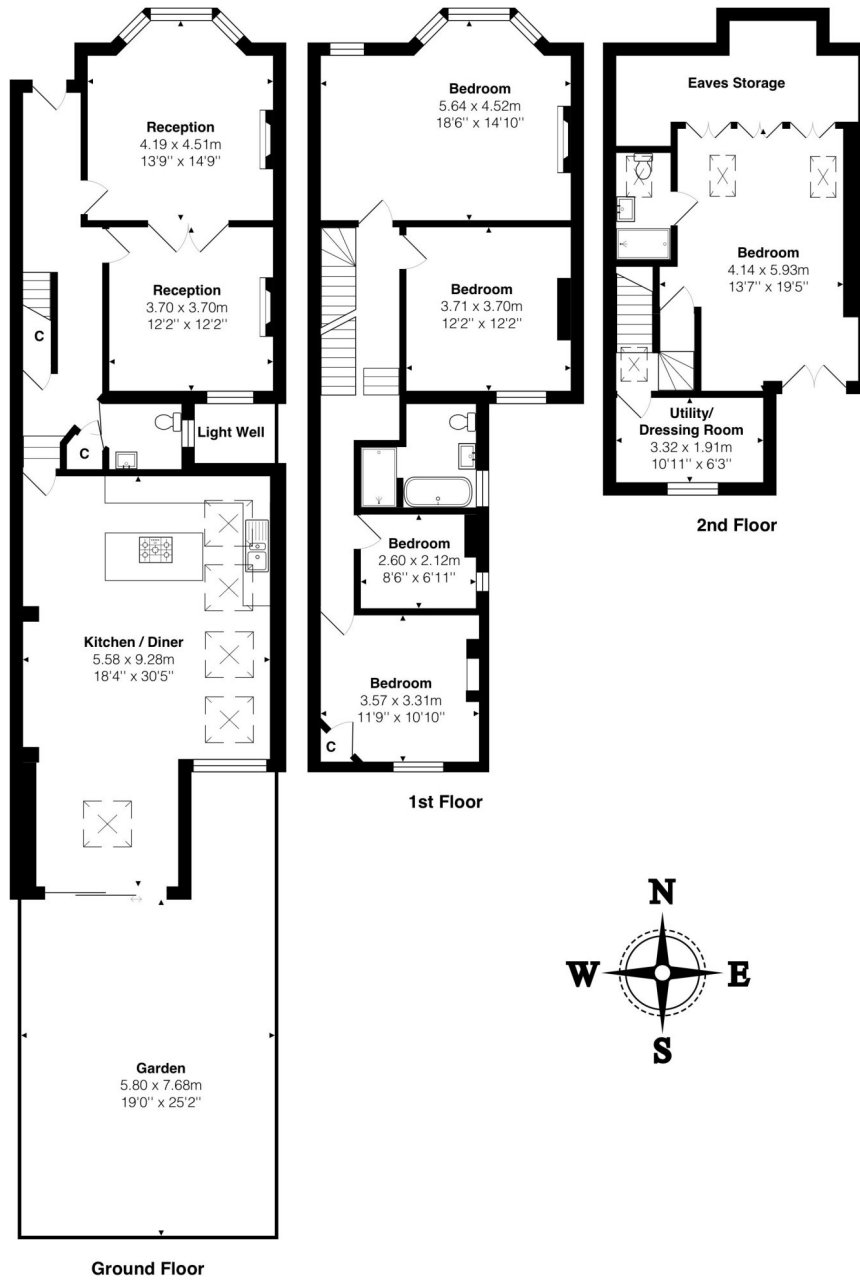


Winkworth



DESCRIPTION: This beautiful five bedroom family home measures 2327 sq. ft. and has accommodation spread over three floors including a huge double loft conversion that houses a guest bedroom with en-suite shower room and a separate utility room built over the rear addition. On the first floor below, there is lovely master bedroom to the front of the building overlooking the tennis club. This room is bright and airy, with a three-part bay window, a feature fireplace and wardrobes. There are three further bedrooms and a family bathroom on this floor. The ground floor of this property is also exceptional. From the superbly maintained Victorian tiled entrance hall, buyers will find a large double aspect reception room with space for lounging and dining, a downstairs cloakroom and the most stunning open plan kitchen diner that has been extended to the rear and into the side return. This space is perfect for family time and even has a seating area leading onto a private south-facing garden at the rear. The property is in excellent condition throughout and really is a much loved family home.





Total Area: 216.1 m² ... 2327 ft² (excluding garden, light well, eaves storage)
All measurements are approximate and for display purposes only

This floorplan is for illustration purposes only and is not to scale. The position and size of doors, windows, appliances and other features are approximate.

Kensal & Queens Park | 0208 960 4947 | kensalrise@winkworth.co.uk



winkworth.co.uk

See things differently

winkworth wishes to inform prospective buyers and tenants that these particulars are a guide and act as information only. All our details are given in good faith and believed to be correct at the time of printing but they don't form part of an offer or contract. No winkworth employee has authority to make or give any representation or warranty in relation to this property. All fixtures and fittings, whether fitted or not are deemed removable by the vendor unless stated otherwise and room sizes are measured between internal wall surfaces, including furnishings.