

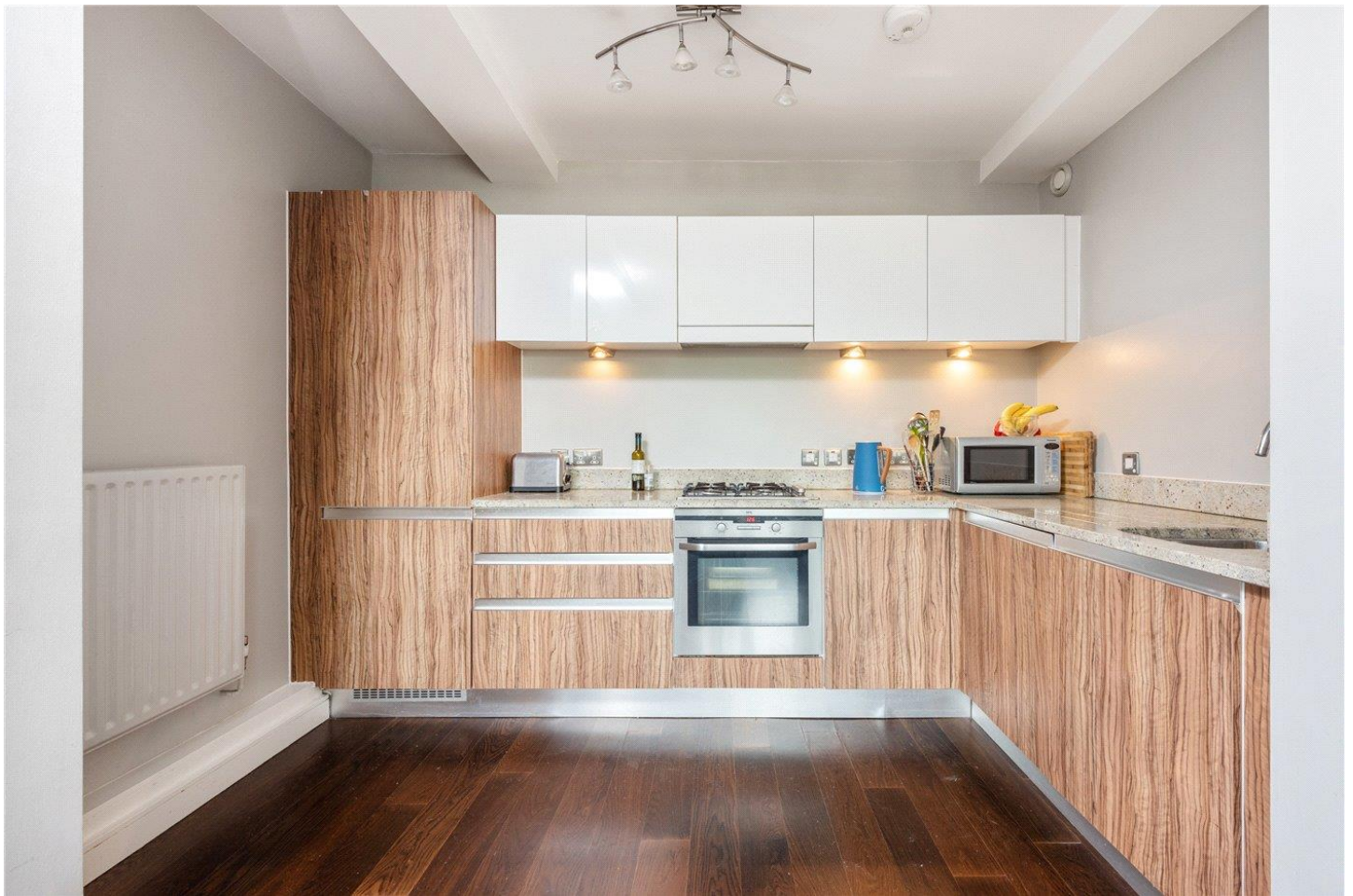


**ECCLESBOURNE APARTMENTS, ECCLESBOURNE ROAD, ISLINGTON, LONDON, N1
£690,000 LEASEHOLD**

A EXQUISITE TWO BEDROOM, TWO BATHROOM FLAT SET WITHIN A PRIVATE GATED VICTORIAN SCHOOL CONVERSION

Islington | 0207 354 2480 | islington@winkworth.co.uk

Winkworth



DESCRIPTION:

This superb two bedroom flat is set over the second floor of a charming Victorian school conversion and boasts stylish contemporary interiors and an ideal layout. A generous open plan living room and kitchen benefits from a vast amount of natural light and offers the perfect entertaining space. The chic integrated kitchen has plenty of storage and worktop space and there's ample room for a large dining table. Both double bedrooms are of generous proportions with master benefitting from ensuite shower room whilst a separate family sized bathroom is located from the hallway. The apartment is incredibly well balanced in terms of usable space and also benefits from a large hallway storage cupboard.

Ecclesbourne Apartments is located in a truly beautiful school conversion which is set in a peaceful secure gated development on Ecclesbourne road, a residential tree lined street located between Essex Road and De Beauvoir. The frequent buses on Southgate Road and Essex road provide direct access to the City and West End. Moreover the over ground services from Haggerston and rail services from Essex Road give easy access to Canary Wharf and the Moorgate.

The thriving restaurants, shops and deli's on Southgate Road are just around the corner. Upper Street, with its famous boutique shops, restaurants and bars, and Shoreditch with its selection of galleries, independent retailers, bars and eateries, are also nearby. For those who would prefer a relaxing stroll, the Regents Canal and New River Walk are just minutes away.

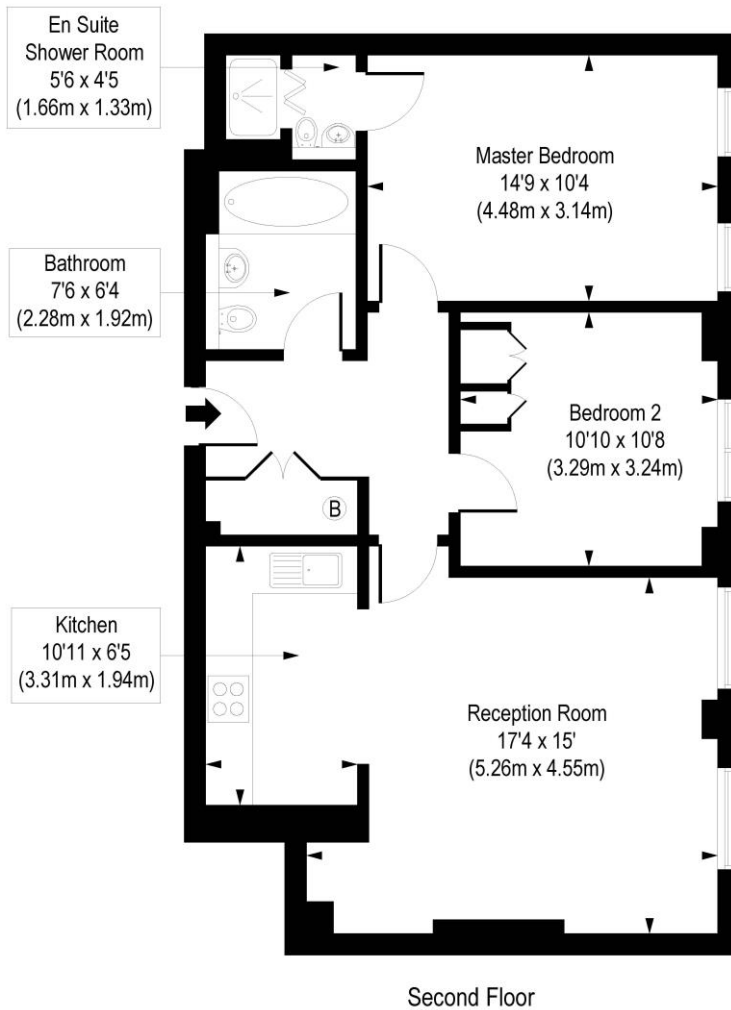
Winkworth



Winkworth

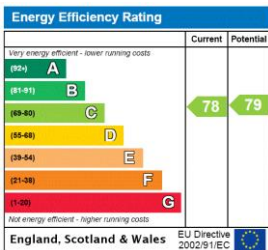
Ecclesbourne Apartments, Ecclesbourne Road, N1

Approx. Gross Internal Floor Area 763 sq. ft / 70.92 sq. m



COMPLIANT WITH RICS CODE OF MEASURING PRACTICE. Floorplan is for illustrative purposes only and is not to scale. Every attempt has been made to ensure the accuracy of the floorplan shown, however all measurements, fixtures, fittings and data shown are an approximate interpretation for illustrative purposes only. Liability for errors, omissions or mis-statement through negligence or otherwise is hereby excluded.

This floorplan is for illustration purposes only and is not to scale. The position and size of doors, windows, appliances and other features are approximate.



Islington | 0207 354 2480 | islington@winkworth.co.uk



winkworth.co.uk

See things differently

Winkworth wishes to inform prospective buyers and tenants that these particulars are a guide and act as information only. All our details are given in good faith and believed to be correct at the time of printing but they don't form part of an offer or contract. No Winkworth employee has authority to make or give any representation or warranty in relation to this property. All fixtures and fittings, whether fitted or not are deemed removable by the vendor unless stated otherwise and room sizes are measured between internal wall surfaces, including furnishings.