



SELSDON ROAD, LONDON, SE27

**£1,150,000 FREEHOLD**

## FOUR DOUBLE BEDROOM SEMI DETACHED VICTORIAN FAMILY HOME

West Norwood | 02086700035 | westnorwood@winkworth.co.uk

**Winkworth**

for every step...

[winkworth.co.uk](http://winkworth.co.uk)



### **DESCRIPTION:**

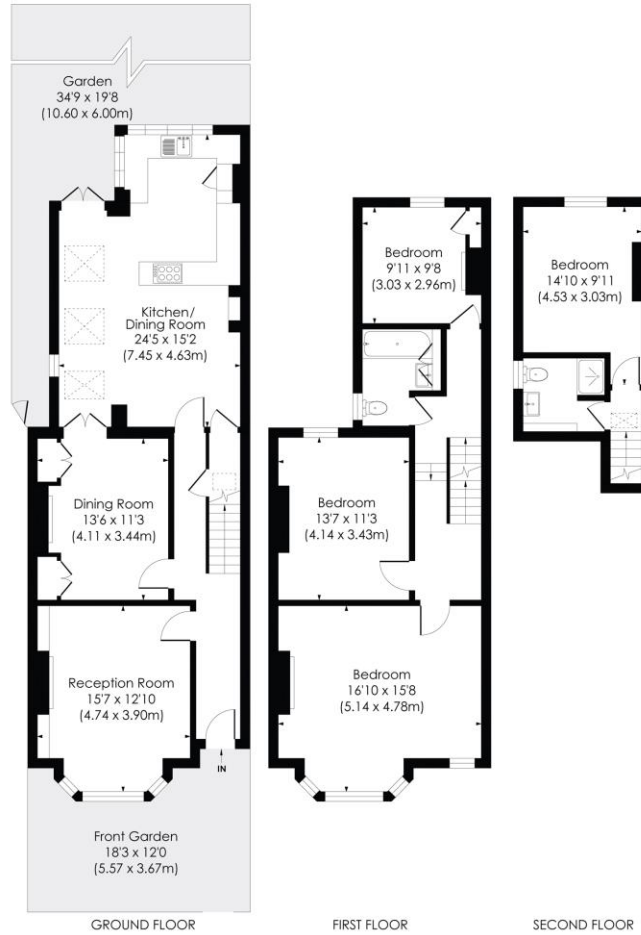
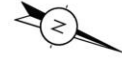
Houses of this quality rarely come to the market. It has great kerb appeal and the current owners have kept it in immaculate condition. Although, already a very comfortable and spacious four double bedroom, two bathroom house, there is also an opportunity to add value by extending into the loft to provide a further double bedrooms and bathroom. It has been extended into the side return which has created a fantastic family living/dining space. Further accommodation comprises: two reception rooms, and southwest facing rear garden. Nearest transport is at West Norwood station which is less than a five minutes walk away, as are the amenities along Knights Hill.



## SELSDON ROAD, SE27

Approx. Gross Internal Floor Area

1673 Sq. ft/155.4 Sq. m

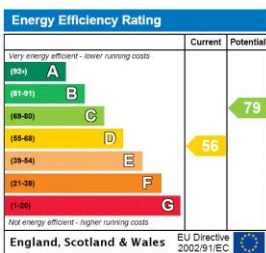


© Pixangle Property Marketing Ltd. info@pixangle.com Tel: 0208 870 2118

pixangle  
PROPERTY MARKETING

This floor plan has been prepared for the purpose of illustration only in accordance with the latest RICS code of measuring practice and is not to scale. All measurements and areas are approximate and whilst every effort has been made to ensure the accuracy of the plan contained here, no responsibility is taken for any error, omission or misstatement.

This floorplan is for illustration purposes only and is not to scale. The position and size of doors, windows, appliances and other features are approximate.



West Norwood | 02086700035 | westnorwood@winkworth.co.uk

for every step...

winkworth.co.uk

Winkworth wishes to inform prospective buyers and tenants that these particulars are a guide and act as information only. All our details are given in good faith and believed to be correct at the time of printing but they don't form part of an offer or contract. No Winkworth employee has authority to make or give any representation or warranty in relation to this property. All fixtures and fittings, whether fitted or not are deemed removable by the vendor unless stated otherwise and room sizes are measured between internal wall surfaces, including furnishings.