



Winkworth



Winkworth



Winkworth

ASHLEY DRIVE, HERTFORDSHIRE, WD6  
**£530,000 FREEHOLD**

# THREE/FOUR BEDROOM FAMILY HOUSE IN SOUTH BOREHAMWOOD

Borehamwood | 020 8953 8899 | borehamwood@winkworth.co.uk



Winkworth

**DESCRIPTION:**

At approaching 1100 Square feet this Three/Four bedroom family house provides flexible and well proportioned accommodation throughout which is complimented by a large Southerly facing rear garden and off street parking to front.

Situated on the highly desirable South side of Borehamwood the property is within easy reach of main arterial roads, Borehamwood town centre and station and several Ofsted rated "Good" and "Outstanding" Schools including Monksmead, Kenilworth and Yavneh.

**AT A GLANCE**

- 3/4 Bedrooms
- South Borehamwood
- 1078 Square Feet
- Guest Cloakroom
- Gas Central Heating
- Double Glazed
- Off Street Parking
- Large Southerly Rear Garden
- Scope To Extend (Stpp)



Winkworth



Winkworth



Approximate Gross Internal Area = 100.2 sq m / 1078 sq ft

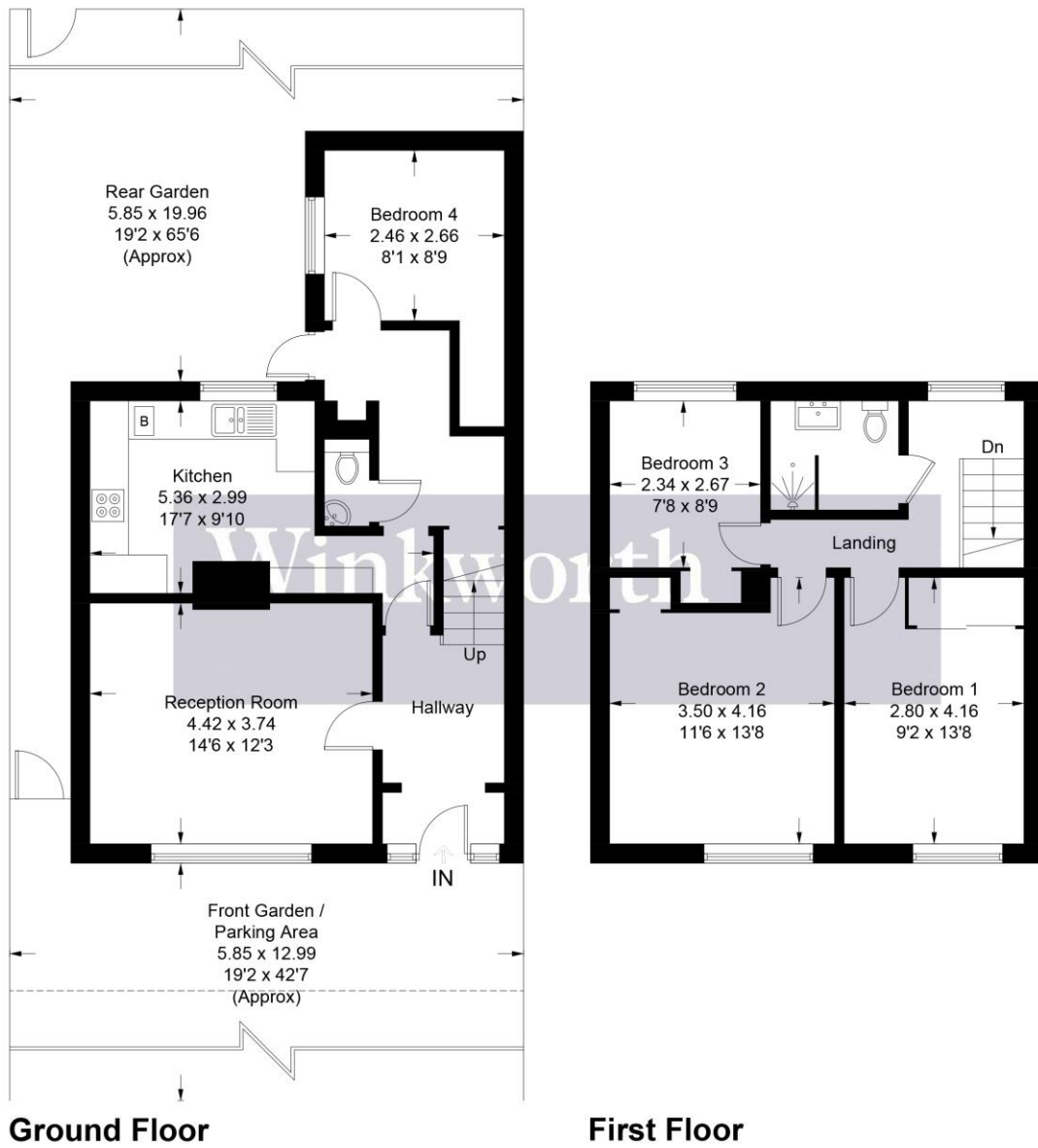


Illustration for identification purposes only, measurements are approximate, not to scale. Winkworth © 2023 (ID1004176)

This floorplan is for illustration purposes only and is not to scale. The position and size of doors, windows, appliances and other features are approximate.

