



CITYVIEW COURT, EAST DULWICH, LONDON, SE22
OIEO £475,000 LEASEHOLD

ONE OF THE BEST ONE/TWO BEDROOM SPLIT-LEVEL PENTHOUSES AVAILABLE IN SE22. OFFERED TO THE MARKET CHAIN-FREE.

Dulwich | 020 8299 2722 | dulwich@winkworth.co.uk

Tenure Leasehold approx. 90 yrs remaining | Council Tax Band C – London Borough of Southwark | Service Charge approx. £2250 pa | Ground Rent approx. £200 pa

winkworth.co.uk

Winkworth

See things differently

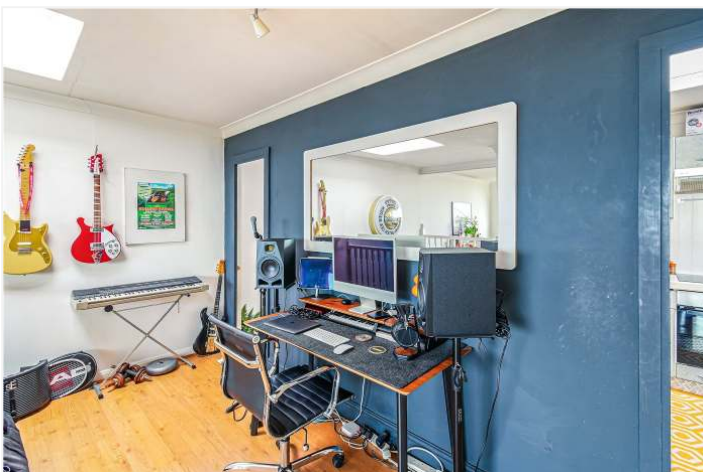


DESCRIPTION:

One of the best split-level penthouses available to the market in SE22. Situated in a very popular new build development and boasting some of the best skyline views in London is this stunning, one/two bedroom, split level flat with two private balconies and garage. Offered to the market chain-free and in fantastic condition, this property is a certain must-see. The double bedroom and a family bathroom furnish the entry floor both with views overlooking the London Skyline, a winding staircase takes you up to the living area, boasting an impressive fully fitted kitchen, complete with built-in appliances. The reception is the breath taker, boasting high ceilings, wood flooring, and a spacious private balcony. The property further boasts a study/bedroom two, ideal for WFH, communal gardens and a private garage. Peckham Rye Park, Dulwich Park, and the Horniman Museum and Gardens are a short walk away, as are the vibrant bars, restaurants, and pubs on Lordship Lane. Transport links to Central London are provided via East Dulwich for direct links to London Bridge, Honor Oak Park, or Forest Hill station for the East London Line.

AT A GLANCE

- One Double Bedroom
- Study Room/Second Bedroom
- Modern Kitchen
- Modern Bathroom
- Two Private Balconies
- Skyline Views
- Garage
- Fantastic Location





Overhill Road



This floorplan is for illustration purposes only and is not to scale. The position and size of doors, windows, appliances and other features are approximate.

Dulwich | 020 8299 2722 | dulwich@winkworth.co.uk

Winkworth

winkworth.co.uk

See things differently

Winkworth wishes to inform prospective buyers and tenants that these particulars are a guide and act as information only. All our details are given in good faith and believed to be correct at the time of printing but they don't form part of an offer or contract. No Winkworth employee has authority to make or give any representation or warranty in relation to this property. All fixtures and fittings, whether fitted or not are deemed removable by the vendor unless stated otherwise and room sizes are measured between internal wall surfaces, including furnishings.