



BASSETT ROAD, W10
£1,850 PER MONTH FURNISHED, UNFURNISHED

A STUNNING ONE BEDROOM FLAT WITH GORGEOUS HIGH CEILINGS ON PREMIER ROAD

North Kensington | 020 7792 5000 | northkensington@winkworth.co.uk

Winkworth

for every step...

winkworth.co.uk

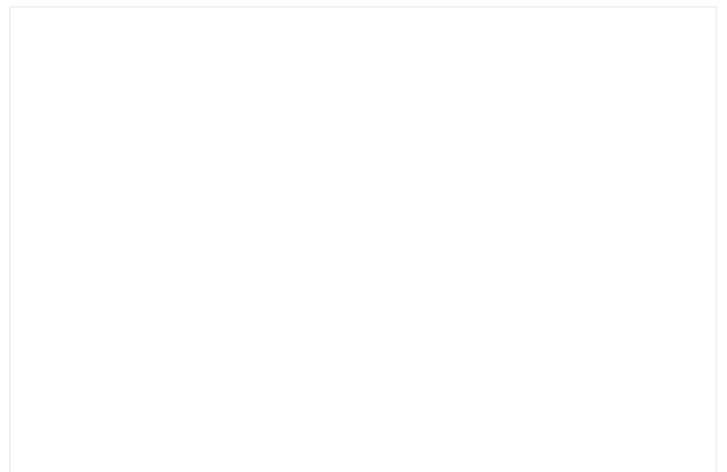


DESCRIPTION:

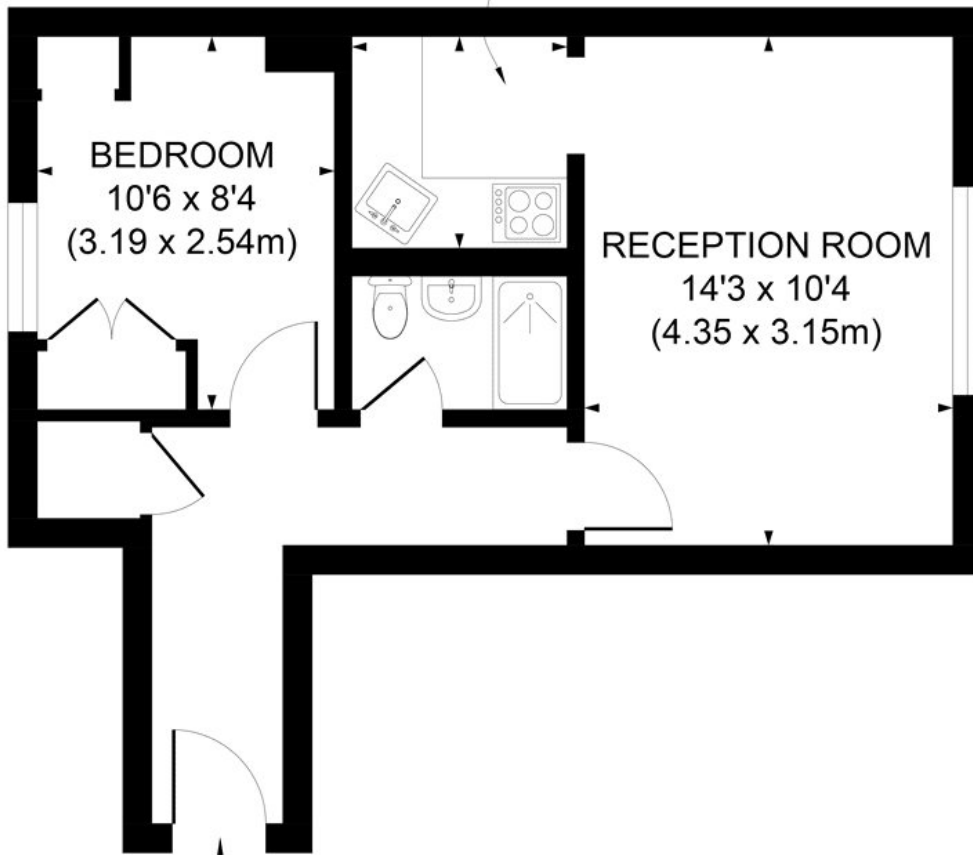
This one bedroom is located on Bassett Road, one of the most desirable addresses within the North Kensington area. The property is on the first floor and comprises a double bedroom, shower room and semi open plan kitchen/reception room.

AT A GLANCE

- GREAT LOCATION
- CLOSE TO TRANSPORT LINKS
- CLOSE TO PORTOBELLO ROAD
- FURNISHED
- AVAILABLE END OF SEPTEMBER



KITCHEN
6'0 x 5'11
(1.84 x 1.81m)



BEDROOM
10'6 x 8'4
(3.19 x 2.54m)

RECEPTION ROOM
14'3 x 10'4
(4.35 x 3.15m)

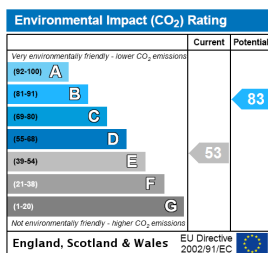
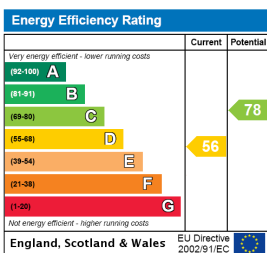
IN

SECOND FLOOR

APPROX. GROSS INTERNAL FLOOR AREA 393 SQ. FT /36.50 SQ. M

Illustration for identification purpose only, not to scale
All measurements are maximum, and includes wardrobes and window bays where applicable
Prepared by Pixangle ©. Tel 020 8870 2118

This floorplan is for illustration purposes only and is not to scale. The position and size of doors, windows, appliances and other features are approximate.



North Kensington | 020 7792 5000 | northkensington@winkworth.co.uk



for every step...

winkworth.co.uk

Winkworth wishes to inform prospective buyers and tenants that these particulars are a guide and act as information only. All our details are given in good faith and believed to be correct at the time of printing but they don't form part of an offer or contract. No Winkworth employee has authority to make or give any representation or warranty in relation to this property. All fixtures and fittings, whether fitted or not are deemed removable by the vendor unless stated otherwise and room sizes are measured between internal wall surfaces, including furnishings.