



FRIERN ROAD, EAST DULWICH, SE22
£725,000 SHARE OF FREEHOLD

**THIS IS A TRULY STUNNING AND
IMMACULATELY PRESENTED, TWO DOUBLE
BEDROOM GROUND GARDEN FLOOR FLAT.**

Dulwich | 020 8299 2722 | dulwich@winkworth.co.uk

Winkworth

winkworth.co.uk

See things differently



DESCRIPTION:

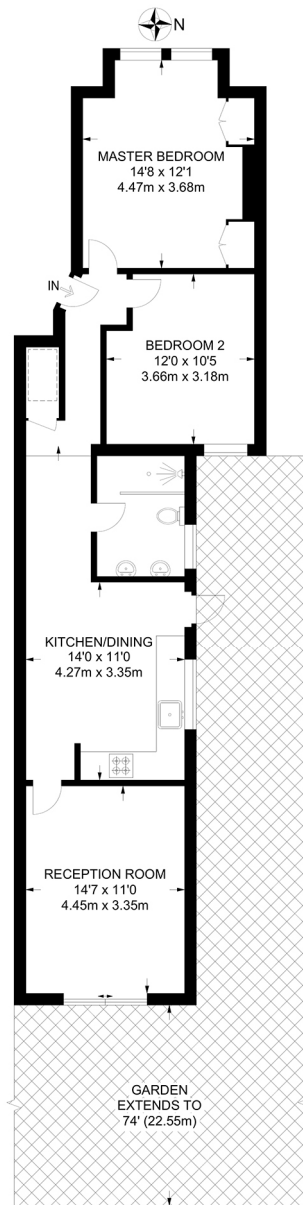
A truly stunning and immaculately presented, two double bedroom ground floor flat, situated on a quiet residential road in SE22. Comprising a spacious double bedroom to front, boasting built in wardrobes and original blackout shutters. The second bedroom is a spacious double bedroom with views towards the large, private garden to rear. The shower room has been recently refurbished to a high standard, boasting double sinks, a spacious walk-in shower and heated towel rail. The kitchen is fully fitted, boasts stunning wood flooring and door leading out to the private garden. The reception is situated to the rear, finished to an impeccable standard and boasts views over the extensive gardens to rear. The property boasts potential to extend in to the side and rear STPP. The property further boasts a private side access and private off-street parking. The location offers easy access to both Lordship Lane and Forest Hill Road, with their impressive array of shops, bars and restaurants. Transport links can be found at either Forest Hill for the East London line, East Dulwich for direct links to London Bridge or a short bus to Peckham Rye for the overground.

AT A GLANCE

- Two Double Bedrooms
- Ground Floor Flat
- Modern Kitchen-Diner
- Large Reception Room
- Modern Shower Room
- Large Private Rear Garden
- Potential To Extend STPP
- Off Street Parking
- Share of Freehold

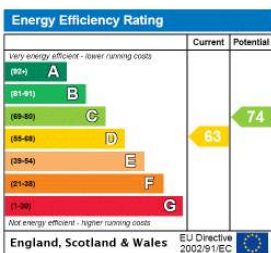






GROUND FLOOR
 APPROXIMATE GROSS INTERNAL AREA
 779 SQ FT / 72.4 SQ M

This floorplan is for illustration purposes only and is not to scale. The position and size of doors, windows, appliances and other features are approximate.



Dulwich | 020 8299 2722 | dulwich@winkworth.co.uk



winkworth.co.uk

See things differently

Winkworth wishes to inform prospective buyers and tenants that these particulars are a guide and act as information only. All our details are given in good faith and believed to be correct at the time of printing but they don't form part of an offer or contract. No Winkworth employee has authority to make or give any representation or warranty in relation to this property. All fixtures and fittings, whether fitted or not are deemed removable by the vendor unless stated otherwise and room sizes are measured between internal wall surfaces, including furnishings.