



OLDFIELD MEWS, N6
£1,400,000 FREEHOLD

**A BEAUTIFULLY PRESENTED, EXTENDED
FOUR BEDROOM TOWNHOUSE LOCATED IN A
PRIVATE, GATED ESTATE.**

Highgate | 020 8341 1988 | highgate@winkworth.co.uk

Winkworth

for every step...

winkworth.co.uk



DESCRIPTION:

This superb family home has been greatly improved to include double-glazing, cavity wall insulation, modern fascia, soffits and gutters. Although already extended at the rear, a Garden Office has been erected, complete with CAT 6 internet cabling. This stylish addition makes an ideal place to work, separate from the main house.

Back inside, and the accommodation is generously proportioned over three floors. Features include two bathrooms (one en suite to the main bedroom), a delightful kitchen/breakfast room and reception room extension with bi-folding doors onto the secluded rear garden. Off street parking is provided at the front and the house comes complete with a garage.

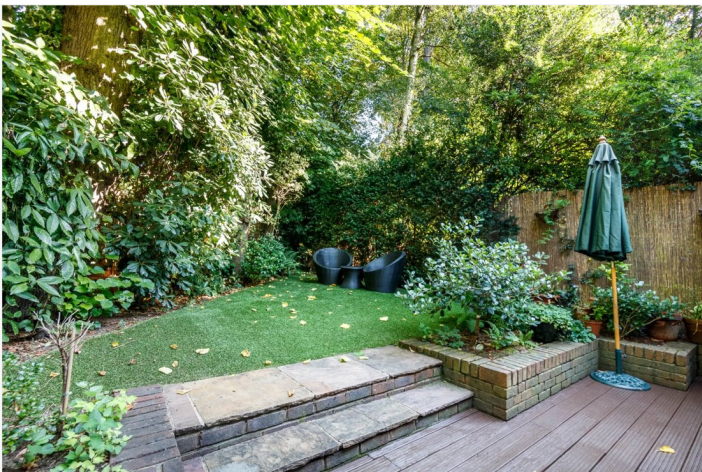
An early viewing is recommended.

LOCATION:

Oldfield Mews is located off Hornsey Lane within the Highgate Conservation Area. There are local shops close at hand whilst the Tube Stations at either Highgate or Archway are equidistant. The house is ideally located for easy access to Highgate Village with its excellent selection of state or fee-paying schools and open spaces.

COUNCIL TAX:

Haringey Council. **COUNCIL TAX BAND: G** (£3,320.53 2023/24).

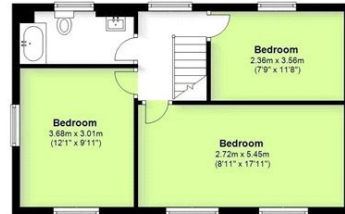


Oldfield Mews N6

Internal House area: approx. 150.13 sq. metres (1616 sq. feet)

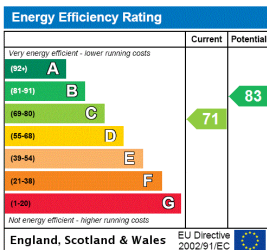
Summer House/Studio area: approx. 10.17 sq metres (109.53 sq. feet)

Garage area: approx. 12.52 sq. metres (134.80 sq. feet)



Whilst every attempt has been made in good faith to ensure the accuracy of this floor plan, all data shown is an interpretation for illustrative purposes only and should be used as a general outline for guidance only and is not to scale. Any areas, measurements or distances quoted on the floor plan are approximate and should not be relied upon to value a property or be the basis of any sale or let. Any intending purchaser should satisfy themselves by a full survey as to the correctness of each detail contained within this floor plan as it is not to be relied upon as a statement or representation of fact.
Plan produced using PlanUp.

This floorplan is for illustration purposes only and is not to scale. The position and size of doors, windows, appliances and other features are approximate.



Highgate | 020 8341 1988 | highgate@winkworth.co.uk

for every step...

winkworth.co.uk

Winkworth wishes to inform prospective buyers and tenants that these particulars are a guide and act as information only. All our details are given in good faith and believed to be correct at the time of printing but they don't form part of an offer or contract. No Winkworth employee has authority to make or give any representation or warranty in relation to this property. All fixtures and fittings, whether fitted or not are deemed removable by the vendor unless stated otherwise and room sizes are measured between internal wall surfaces, including furnishings.