



TAVISTOCK CHAMBERS, BLOOMSBURY WAY, LONDON, WC1A
£1,000,000 LEASEHOLD APPROX. 174 YEARS REMAINING

A CHARMING TWO/THREE BEDROOM APARTMENT ON THE FIRST FLOOR
OF A WELL LOCATED, HANDSOME BLOOMSBURY REDBRICK.

Service Charge: Approx. £1,500 PA | Ground Rent: NIL | Council tax band: F
Where no figures are shown, we have been unable to ascertain the information. All figures that are shown were correct at the time of printing.

West End | 020 7240 3322 | westend@winkworth.co.uk

Winkworth

for every step...

winkworth.co.uk



DESCRIPTION:

The flat is being sold by its long term owner. It has high ceilings, nice natural light and is in good order throughout. The configuration comprises of an entrance hall, a comfortable reception, modern fitted eat-in kitchen, double bedroom, second double bedroom/office, a box room and a bathroom. Tavistock Chambers is centrally located close to The British Museum and right next to Hawksmoor's masterpiece of St George's Church. The apartment has a comfortable feel with high ceilings and pleasant views onto the west edifice of the Church. The flat, building and common parts are all in good order. The location gives excellent access to The British Museum, Bloomsbury, Oxford Street, Covent Garden, The major London Universities, the Legal Quarter and the West End.



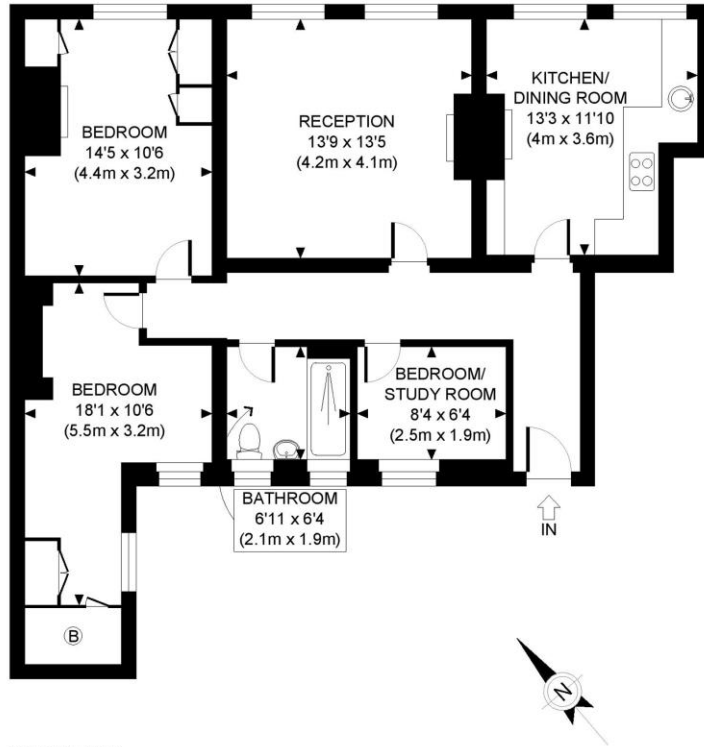
Winkworth

for every step...



Winkworth

for every step...



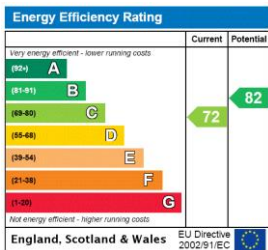
FIRST FLOOR
GROSS INTERNAL
FLOOR AREA 924 SQ FT

APPROX. GROSS INTERNAL FLOOR AREA: 924 SQ FT/ 86 SQM

PROPERTY PHOTO PLANS.CO.UK
ONE STOP SHOP FOR PROPERTY MARKETING

This plan is for illustrative purposes only and should be used as such by any prospective client. Whilst every attempt has been made to ensure the accuracy of the Floor Plan contained here, measurements of the doors, windows, rooms and any other items are approximate and no responsibility is taken for any errors, omissions, or misstatement. The services, systems and appliances shown have not been tested and no guarantee as to the operability or efficiency can be given.

This floorplan is for illustration purposes only and is not to scale. The position and size of doors, windows, appliances and other features are approximate.



West End | 020 7240 3322 | westend@winkworth.co.uk



for every step...

winkworth.co.uk

Winkworth wishes to inform prospective buyers and tenants that these particulars are a guide and act as information only. All our details are given in good faith and believed to be correct at the time of printing but they don't form part of an offer or contract. No Winkworth employee has authority to make or give any representation or warranty in relation to this property. All fixtures and fittings, whether fitted or not are deemed removable by the vendor unless stated otherwise and room sizes are measured between internal wall surfaces, including furnishings.