



FAWNBRAKE AVENUE, SE24
£365,000 LEASEHOLD

A GROUND FLOOR ONE BEDROOM VICTORIAN CONVERSION IN HERNE HILL

Herne Hill | 0207 501 8950 | hernehill@winkworth.co.uk

Winkworth

for every step...

winkworth.co.uk



DESCRIPTION:

This presents a fantastic opportunity to acquire a ground floor Victorian conversion, boasting one double bedroom and presented in good decorative order. The property also enjoys access to a sizeable, shared garden. As you enter there is a spacious open-plan living area, encompassing a reception/diner/kitchen and the modern kitchen is equipped with ample wall and base units for storage comes complete with the usual appliances. Additionally, there's a metro-tiled white bathroom with a washbasin, bathtub with an overhead shower, and a WC. The double bedroom overlooks the large, shared garden, perfect for summer entertaining. Fawnbrake Avenue is a serene tree-lined residential street, characterized by charming terraced mid-Victorian properties. Residents benefit from a variety of dining options, including restaurants and independent coffee shops/cafes, as well as convenient walking access to Brockwell Park with its renowned Lido. Positioned conveniently for transport at Herne Hill mainline train station (Thameslink), this property offers easy commuting to both the City and the West End.

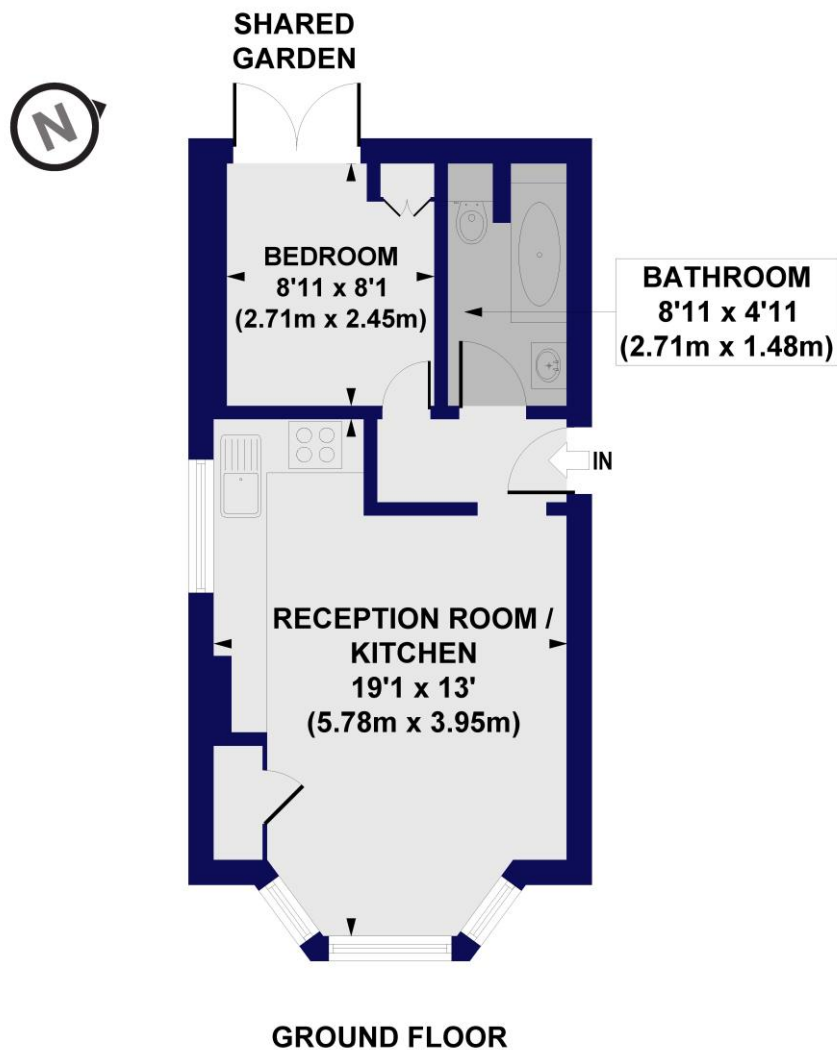
AT A GLANCE

- Ground floor Victorian conversion
- One double bedroom
- Sizeable shared garden
- Spacious open-plan living area
- Modern equipped kitchen
- Metro-tiled white bathroom
- Double bedroom with garden view
- Walking access to Brockwell Park
- Convenient transport links





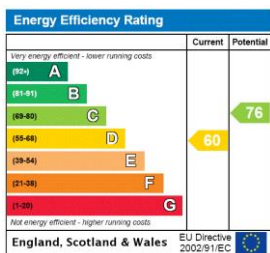
Fawnbrake Avenue, SE24
 Approx. Gross Internal Floor Area 346 sq. ft / 32.15 sq. m



All measurements of walls, doors, windows, fittings and appliances, including their size and location, are shown as standard sizes and do not constitute any warranty or representation by the seller, their agent or CP Creative. Any intending purchaser must satisfy himself by inspection or otherwise as to the correctness of the information contained in these plans. This plan is for illustrative purposes only and should be used as such by any prospective purchasers.

Winkworth

This floorplan is for illustration purposes only and is not to scale. The position and size of doors, windows, appliances and other features are approximate.



Tenure: Leasehold
Term: Expires - 24/06/2176
Service Charge: £458.44 per annum – for the share of the buildings insurance
Council Tax Band: B
 Where no figures are shown, we have been unable to ascertain the information. All figures that are shown were correct at the time of printing.

Herne Hill | 0207 501 8950 | hernehill@winkworth.co.uk



for every step...

winkworth.co.uk

Winkworth wishes to inform prospective buyers and tenants that these particulars are a guide and act as information only. All our details are given in good faith and believed to be correct at the time of printing but they don't form part of an offer or contract. No Winkworth employee has authority to make or give any representation or warranty in relation to this property. All fixtures and fittings, whether fitted or not are deemed removable by the vendor unless stated otherwise and room sizes are measured between internal wall surfaces, including furnishings.