



LINTON GROVE, WEST NORWOOD, LONDON, SE27
£675,000 FREEHOLD

THREE BEDROOM TERRACED FAMILY HOME

West Norwood | 02086700035 | westnorwood@winkworth.co.uk

Winkworth

for every step...

winkworth.co.uk



DESCRIPTION:

Offered to the market is this spacious, terraced, three double bedroom, family home. Further accommodation comprises; reception room, kitchen/diner, private bathroom, downstairs WC, family bathroom, off street parking and private rear garden. Further to the usual planning consents, there is also the opportunity to convert the loft to provide further living accommodation. Nearest transport is at West Norwood station with its frequent services to London Bridge and Victoria.



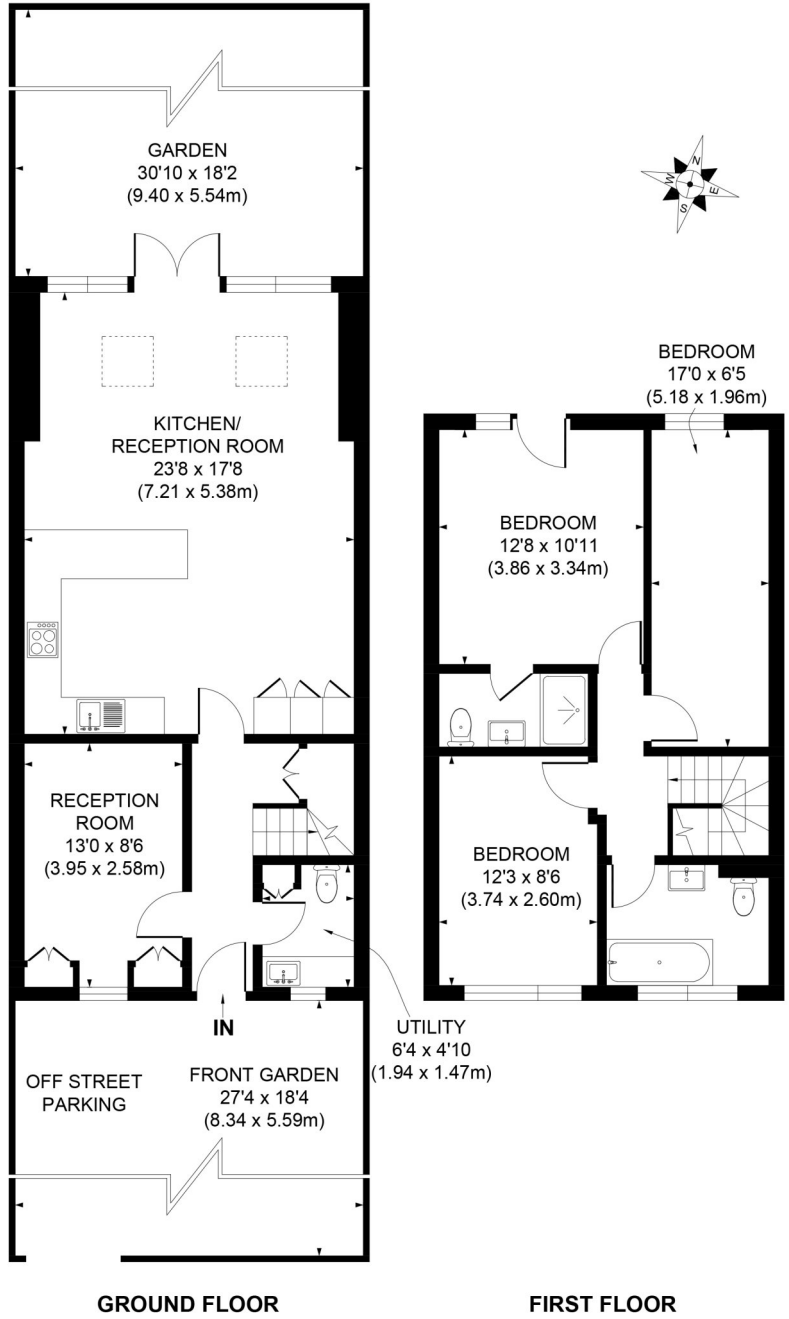
Winkworth

for every step...



Winkworth

for every step...



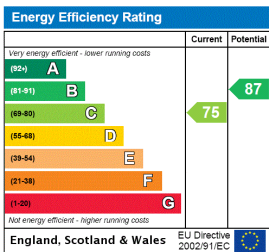
GROUND FLOOR

FIRST FLOOR

APPROX. GROSS INTERNAL FLOOR AREA 1180 SQ. FT /109.64 SQ. M

Illustration for identification purpose only, not to scale
 All measurements are maximum, and includes wardrobes and window bays where applicable
 Prepared by Pixangle ©. Tel 020 8870 2118

This floorplan is for illustration purposes only and is not to scale. The position and size of doors, windows, appliances and other features are approximate.



West Norwood | 02086700035 | westnorwood@winkworth.co.uk

for every step...

winkworth.co.uk

Winkworth wishes to inform prospective buyers and tenants that these particulars are a guide and act as information only. All our details are given in good faith and believed to be correct at the time of printing but they don't form part of an offer or contract. No Winkworth employee has authority to make or give any representation or warranty in relation to this property. All fixtures and fittings, whether fitted or not are deemed removable by the vendor unless stated otherwise and room sizes are measured between internal wall surfaces, including furnishings.