



Heyford Avenue, London, SW8

£600,000 Share of Freehold

Introducing a charming and sophisticated split level two-bedroom apartment in a period terraced building on the well located Heyford Avenue. The flat offers you an abundance of space and is finished to a high standard throughout.

LOCATION

You will find the property on Heyford Avenue, just off South Lambeth Road in the heart of Little Portugal. Vauxhall, nearby, is a gateway to the City and a fantastic area that offers plenty of amenities.

DESCRIPTION

Introducing a charming and sophisticated split level two-bedroom apartment in a period terraced building on the well located Heyford Avenue. The flat offers you an abundance of space and is finished to a high standard throughout.

As you step inside, you will be greeted by an abundance of natural light that illuminates the entire apartment.

Ahead of you is the stylish kitchen, featuring sleek countertops, high-end appliances, and ample storage space.

The living space is delightful, with its bright and airy atmosphere, creating the perfect setting for relaxation and entertaining. There is plenty of space for a large sofa and dining table.

The second bedroom is found on the same floor to the rear of the property. A generous size, suitable for a king-sized bed. You will find built in storage and the ensuite to the rear. The ensuite comprises a bath with overhead shower, sink and W.C.

Heading up to the top floor, you will find the master bedroom and another bathroom. The master bedroom is an excellent size and benefits from plenty of storage including full length eaves storage. The bathroom is done to an excellent standard and tiled throughout. Housing a walk-in shower, W.C., sink and heated towel rack.

LOCAL AUTHORITY

Lambeth

TENURE

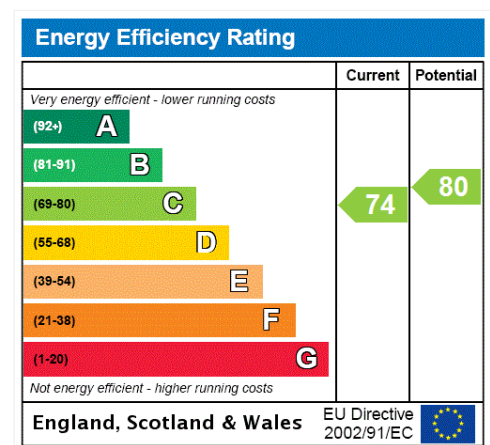
Share of Freehold : 110 years

Ground Rent - £0.00

Service Charge - £0.00

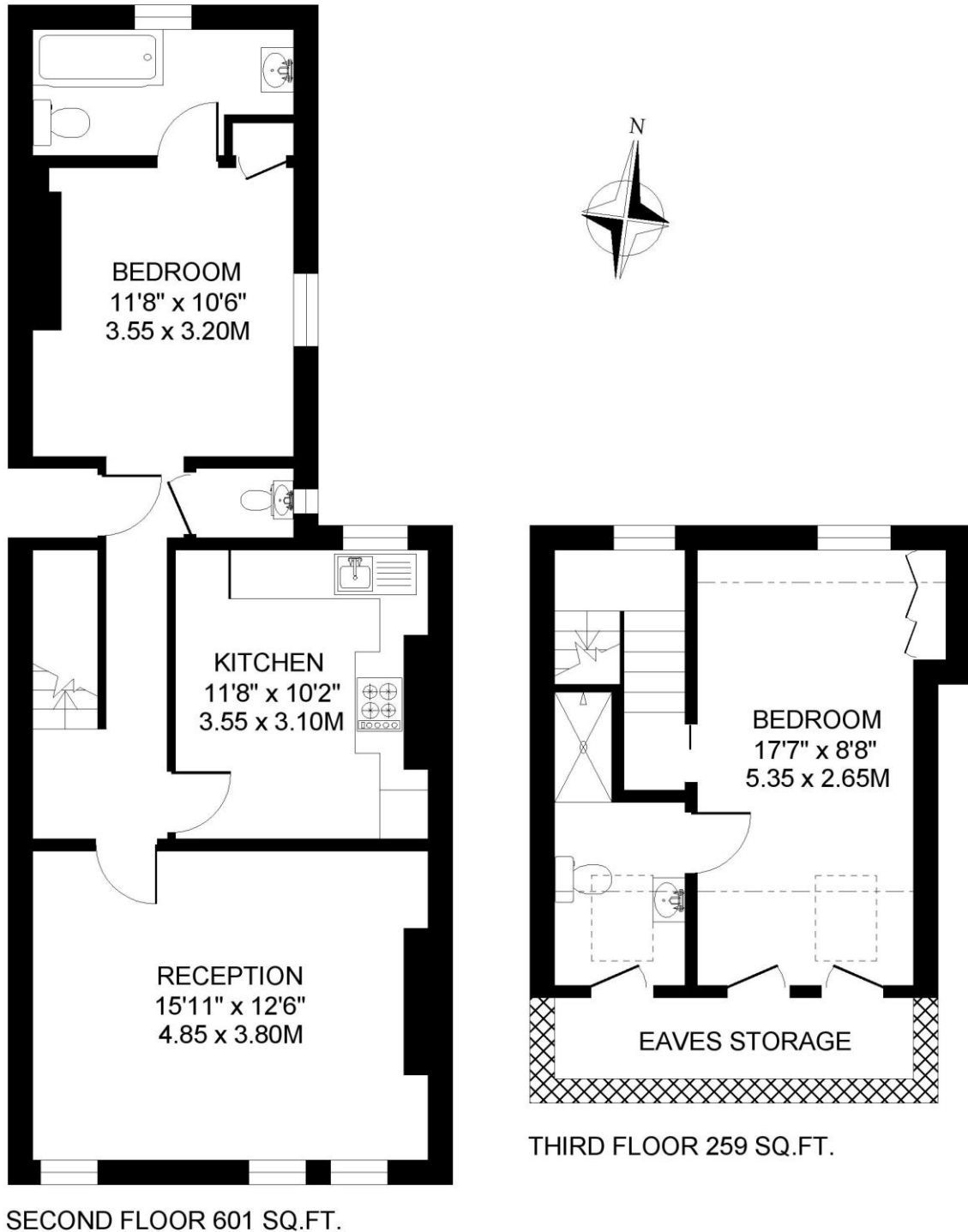
DIRECTIONS

Nine Elms Station (Northern Line) is just 0.4 miles away, Vauxhall Station (South West Trains & Victoria Line) is 0.5 miles away. Stockwell Underground (Victoria & Northern Line) is 0.6 miles away. South Lambeth Road is well served by frequent bus services.





HEYFORD AVENUE SW8
2 BEDROOM FLAT
Approximate gross floor area
860 SQ.FT. / 79.9 SQ.M.
Plus eaves storage 50 sq.ft. / 4.7 sq.m.



This floorplan is for illustration purposes only and is not to scale. The position and size of doors, windows, appliances and other features are approximate.

Copyright: These plans should not be reproduced by any other person, without permission.
Floorplan produced for Winkworth by Floorplanners 07801 228850

Kennington | 020 7587 0600 | kennington@winkworth.co.uk