



LANSDOWN LANE, SOMERSET, BA1
£625,000 FREEHOLD



LANSDOWN LANE, SOMERSET, BA1

Link-detached | Principal bedroom with en suite shower room | 3 further double bedrooms | 2 reception rooms | garden | off street parking | garage.

A well-presented link-detached house in a sought after location.

The property is located in a quiet cul-de-sac off Lansdown Lane a short walk from the amenities in Weston Village and opposite St Marys School.

The accommodation is arranged over two storeys. On the ground floor there is a kitchen, separate utility room, cloakroom, sitting room and separate dining room. On the first floor there is a principal bedroom with en suite shower room, there are three further double bedrooms and a family bathroom.

Externally there are front and rear gardens, there is also off street parking and a garage which is accessed internally via the utility room.

Freehold

All main connected

Viewing strictly by appointment

Post code BA1 4LR

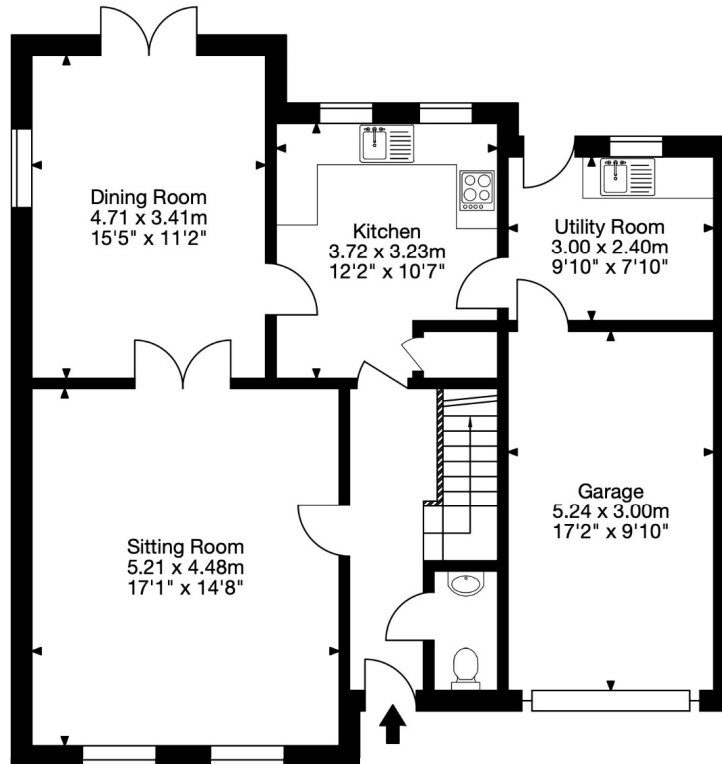
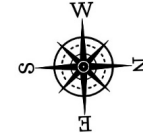


LOCATION

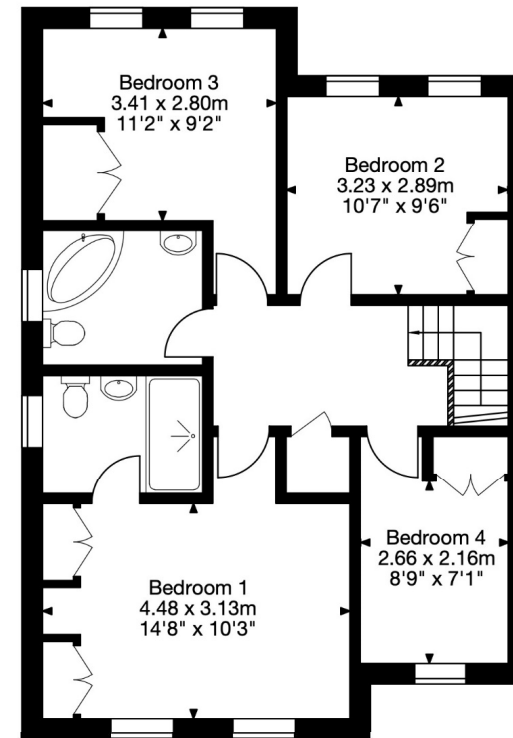
Weston has a range of amenities including, cafes, Tesco supermarket, bakery, hairdressers and dentist. The highly regarded St Marys School is situated opposite the property.



24 Lansdown Lane, Bath BA1 4LR
 Gross Internal Area (Approx.)
 Main House = 135 sq m / 1,455 sq ft
 Garage = 16 sq m / 169 sq ft
 Total Area = 151 sq m / 1,624 sq ft



Ground Floor



First Floor

Capture Property Marketing 2023. Drawn to RICS guidelines.
 All Measurements are approximate and should not be relied on as a statement of fact.
 Plan is for illustration purposes only. Not drawn to scale.

Capture.

Bath | 01225 829 000 | bath@winkworth.co.uk

winkworth.co.uk

Winkworth wishes to inform prospective buyers and tenants that these particulars are a guide and act as information only. All our details are given in good faith and believed to be correct at the time of printing but they don't form part of an offer or contract. No Winkworth employee has authority to make or give any representation or warranty in relation to this property. All fixtures and fittings, whether fitted or not are deemed removable by the vendor unless stated otherwise and room sizes are measured between internal wall surfaces, including furnishings.

