



BARLBY ROAD, W10
£2,200,000 FREEHOLD

A LARGE FIVE BEDROOM FAMILY HOME WITH A SOUTH FACING GARDEN AND TERRACE

North Kensington | 020 7792 5000 | northkensington@winkworth.co.uk

Winkworth

for every step...

winkworth.co.uk



DESCRIPTION:

A gorgeous family home with attractive period features and a south-facing garden and terrace which benefits from a fantastic workshop/shed to the rear.

The house has been kept immaculately by the current owners and offers a great balance of accommodation which includes double reception room, extended kitchen/dining room, downstairs bathroom, five good bedrooms, two further bathrooms (one en-suite) and plenty of storage. The house has been thoughtfully designed to maximise useful space and capture the practical necessities of family life.

Barlby Road is located in the Royal Borough of Kensington & Chelsea close to the vibrant amenities in and around Golborne Road and Portobello Road.

AT A GLANCE

- Freehold House
- South Facing Garden
- Five Double Bedrooms
- Three Bathrooms
- Large Extended Eat-in Kitchen
- Large Shed/Workshop
- Double Reception Room
- EPC Rating D





Barlby Road, W10

APPROX. GROSS INTERNAL AREA *
1805 Sq Ft - 167.68 Sq M
(EXCLUDING EAVES STORAGE & SHED)

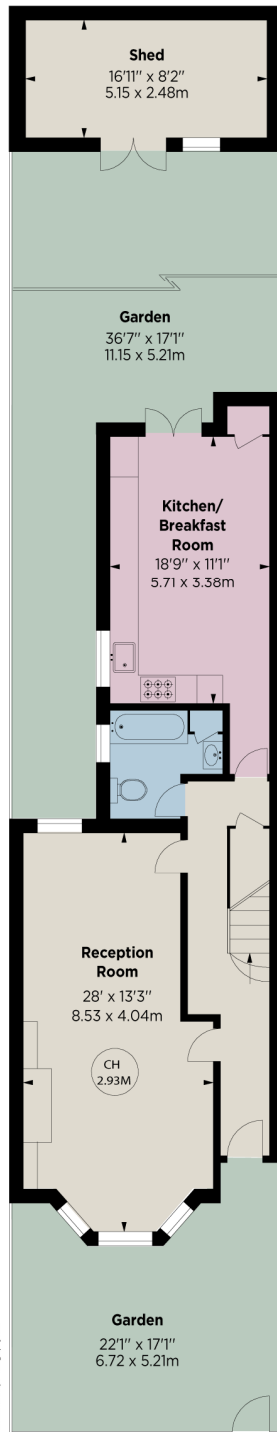
EAVES STORAGE
93 Sq Ft - 8.64 Sq M

SHED
139 Sq Ft - 12.91 Sq M

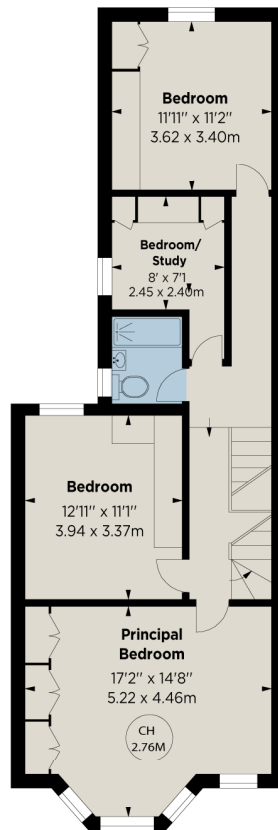
TOTAL APPROX. GROSS INTERNAL AREA *
2037 Sq Ft - 189.24 Sq M



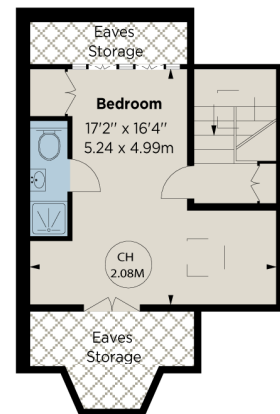
This floorplan is for GUIDANCE ONLY and NOT FOR VALUATION purposes.



GROUND FLOOR



FIRST FLOOR



SECOND FLOOR

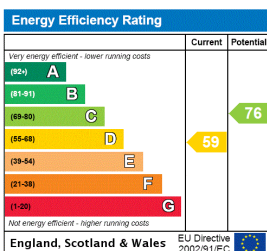
Key :
CH - Ceiling Height
Eaves Storages

ALEX WINSHIP
Photography

*Floorplan for guidance only, not to scale or valuations purposes. It must not be relied upon as a statement of fact. All measurements and areas are approximate and have been prepared in accordance with the current edition of the RICS Code of Measuring Practice.



This floorplan is for illustration purposes only and is not to scale. The position and size of doors, windows, appliances and other features are approximate.



North Kensington | 020 7792 5000 | northkensington@winkworth.co.uk

Winkworth

for every step...

winkworth.co.uk

Winkworth wishes to inform prospective buyers and tenants that these particulars are a guide and act as information only. All our details are given in good faith and believed to be correct at the time of printing but they don't form part of an offer or contract. No Winkworth employee has authority to make or give any representation or warranty in relation to this property. All fixtures and fittings, whether fitted or not are deemed removable by the vendor unless stated otherwise and room sizes are measured between internal wall surfaces, including furnishings.