



DALSTON GARDENS, STANMORE, HA7
£1,850,000 FREEHOLD

WAREHOUSE PREMISES FOR SALE

Kingsbury | 020 8204 0000 | kingsbury@winkworth.co.uk



for every step...

winkworth.co.uk

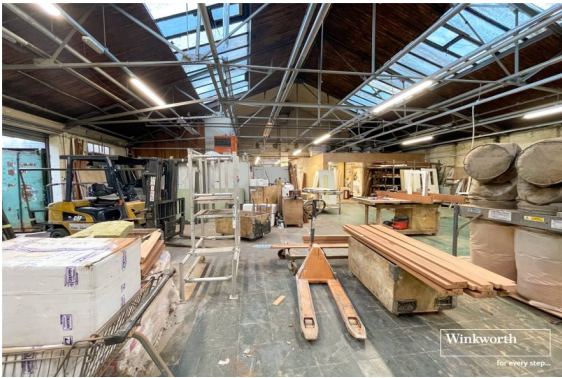


DESCRIPTION: Location: Location: The property is situated on an industrial estate on Dalston Gardens, Stanmore - a prime location just off Honeypot Lane. Close by to both Canons Park & Queensbury Stations & local bus routes. This ground floor warehouse unit offers a large open plan storage and distribution area measuring approx. 8,000 sq ft. Benefitting from easy front loading with full height roller shutter door and off street parking for 6-8 cars. Further parking is available to side of the premises. The warehouse space has an eaves height of approx 25 ft. Planning Permission for a First Floor rear Extension has been granted under Planning Application Number P/0480/21. This is an added benefit on this plot.



Winkworth

for every step...



Energy Efficiency Rating		
	Current	Potential
<i>Very energy efficient - lower running costs</i>		
(92+) A		
(81-91) B		
(69-80) C		
(55-68) D		
(39-54) E		
(21-38) F	22	22
(1-20) G		
<i>Not energy efficient - higher running costs</i>		
England, Scotland & Wales	EU Directive 2002/91/EC	



for every step...



This floorplan is for illustration purposes only and is not to scale. The position and size of doors, windows, appliances and other features are approximate.

Kingsbury | 020 8204 0000 | kingsbury@winkworth.co.uk



for every step...

winkworth.co.uk

Winkworth wishes to inform prospective buyers and tenants that these particulars are a guide and act as information only. All our details are given in good faith and believed to be correct at the time of printing but they don't form part of an offer or contract. No Winkworth employee has authority to make or give any representation or warranty in relation to this property. All fixtures and fittings, whether fitted or not are deemed removable by the vendor unless stated otherwise and room sizes are measured between internal wall surfaces, including furnishings.