



HARTFORDE ROAD, HERTFORDSHIRE, WD6
£500,000 FREEHOLD

THREE BEDROOM SEMI DETACHED HOUSE WITH POTENTIAL TO EXTEND

Borehamwood | 020 8953 8899 | borehamwood@winkworth.co.uk



DESCRIPTION:

Offered on a chain free basis, is this semi detached house.

Located on the Northside of Borehamwood, the property comprises two reception rooms, kitchen to the ground floor and three bedrooms, shower room and separate WC to the first floor. There is off street parking to the front and garden. To the rear the garden is in excess of 100ft

Although dated the property offers potential to extend into the loft and rear (SSTP) to create a good family home.

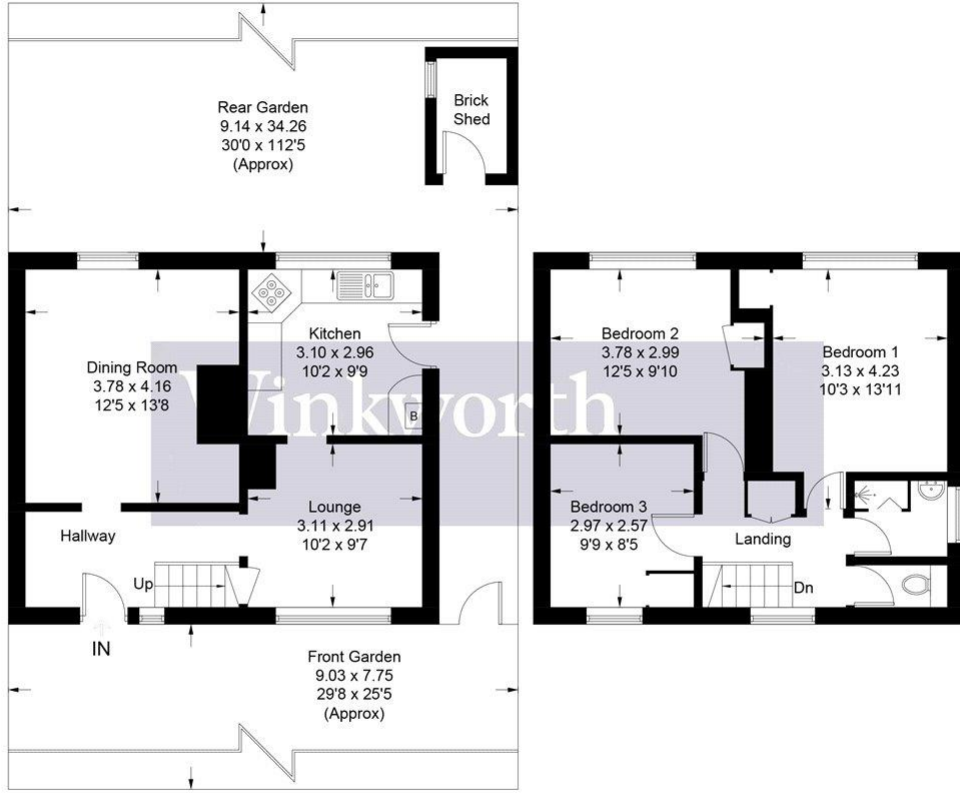
AT A GLANCE

- 3 Bedrooms
- Entrance Hall
- Kitchen
- Reception Room
- Dining Room
- Shower Room
- Separate Wc
- Off Street Parking





Approximate Gross Internal Area = 84.8 sq m / 913 sq ft
(Excluding Brick Shed)



Ground Floor

First Floor

Illustration for identification purposes only, measurements are approximate, not to scale. Winkworth © 2023 (ID1018215)

This floorplan is for illustration purposes only and is not to scale. The position and size of doors, windows, appliances and other features are approximate.

