



5 GROVELANDS PARK, WINNERSH, WOKINGHAM, BERKSHIRE, RG41 5LD
£140,000

Winkworth



GROVELANDS PARK

This extended and improved one bedroom park home is offered to the market with **NO ONWARD CHAIN**, conveniently located on the pet friendly Grovelands Park in Winnersh, giving easy access to Reading and Wokingham.

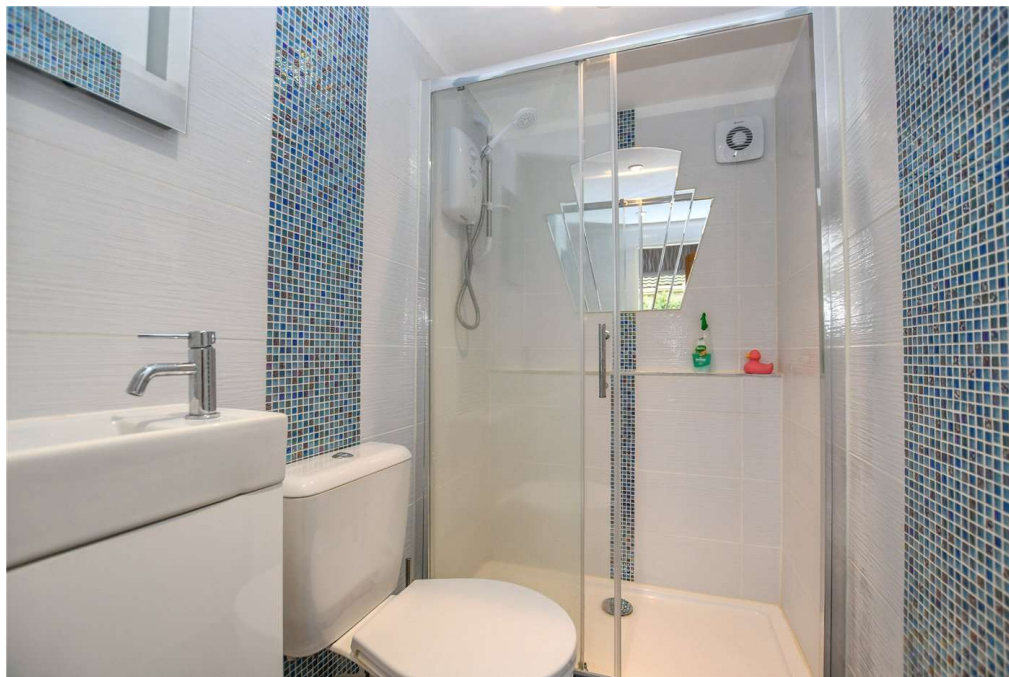
As you approach this lovely home and make your way to the front door you enter through a secure gate into the secluded low maintenance garden area which formally homed a hot tub and has a shed with light and power.

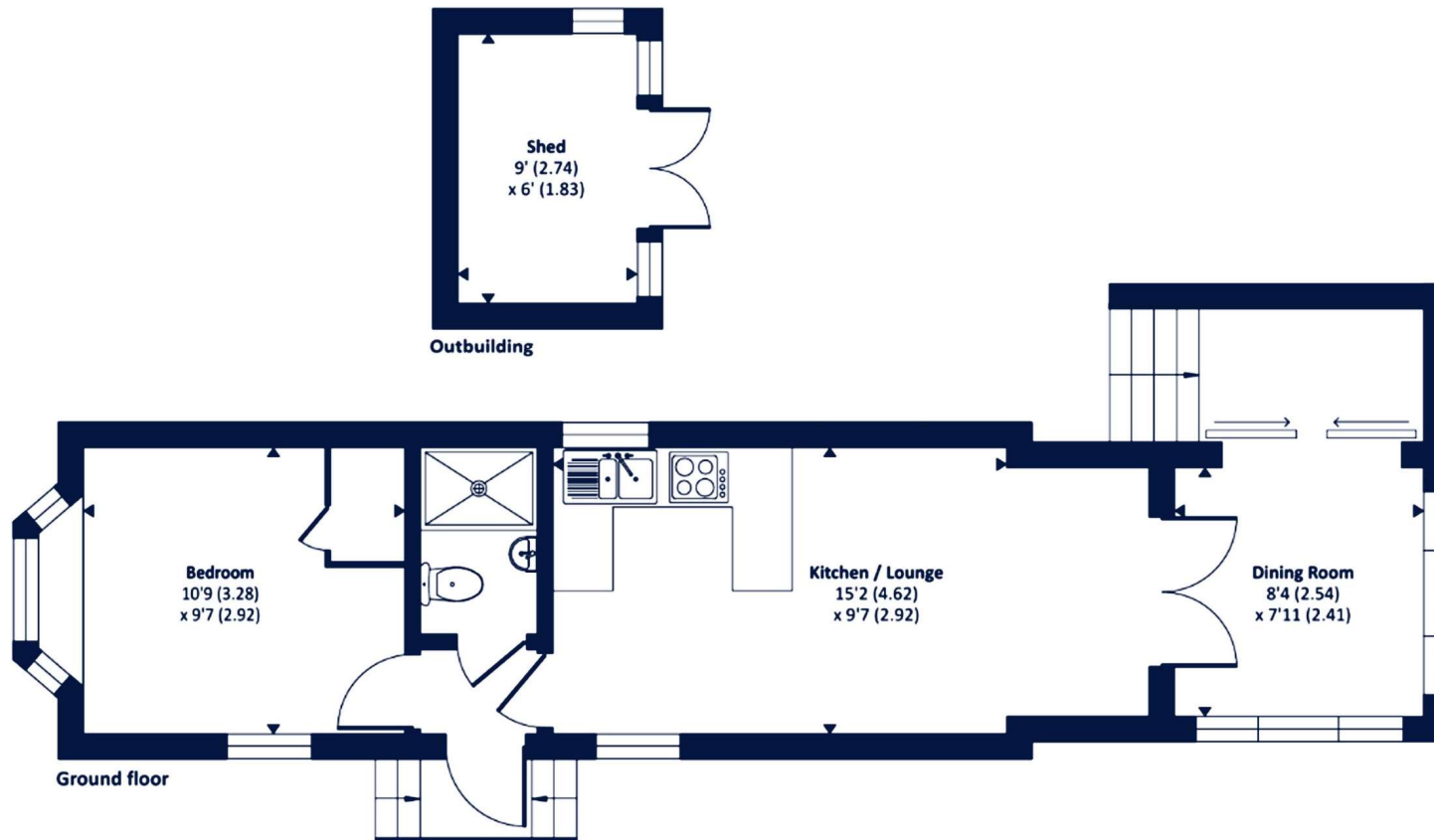
Once welcomed into the property you make your way into a cosy hallway connecting the living accommodation. Overlooking the communal green at the front is the master bedroom. Making your way through the rest of this spacious property you find a modern fitted kitchen that leads through to the immaculately presented living room and a dining room to the rear.

The shower room rounds off the living accommodation. The whole property benefits from an abundance of light coming through the many windows, and off road parking.

Local amenities including a Sainsbury superstore and mainline railway station are all close by.







Approximate Area = 419 sq ft / 38.9 sq m
 Outbuilding = 54 sq ft / 5 sq m
 Total = 473 sq ft / 43.9 sq m
 For identification only - Not to scale

Wokingham | 01189 072777 | wokingham@winkworth.co.uk



Winkworth wishes to inform prospective buyers and tenants that these particulars are a guide and act as information only. All our details are given in good faith and believed to be correct at the time of printing but they don't form part of an offer or contract. No Winkworth employee has authority to make or give any representation or warranty in relation to this property. All fixtures and fittings, whether fitted or not are deemed removable by the vendor unless stated otherwise and room sizes are measured between internal wall surfaces, including furnishings.