



COLVILLE GARDENS, W11

£1,195,000 SHARE OF FREEHOLD (984 YEARS REMAINING)

THIS TRULY EXCEPTIONAL ONE BEDROOM FLAT EXTENDING TO 743SQ.FT, LOCATED ON A PEACEFUL TREE LINED CUL DE SAC RIGHT AT THE HEART OF NOTTING HILL.

**1 Bedroom, 1 Reception Room, 1 Bathroom, Flat/Apartment,
Ground Floor, 743 Approx Sq Ft, Service Charge £1,876.78 p/a,
Ground Rent N/A**

Winkworth

Notting Hill Sales | 0207 727 3227 | nottinghill@winkworth.co.uk

winkworth.co.uk

for every step...



DESCRIPTION:

A truly exceptional one-bedroom flat boasting incredible proportions throughout which would be perfect for entertaining. To the front is an amazing 23-foot reception room with solid wood flooring, beautiful corning and a huge west facing bay window looking out over gardens. To the rear are a large bedroom with plenty of built-in wardrobe space, a well-appointed kitchen and a stylish bathroom.

LOCATION:

Colville Gardens is a quiet street, well located just to the north of the most fashionable stretch of Westbourne Grove with some of Notting Hill's most popular boutiques and restaurants just moments away.

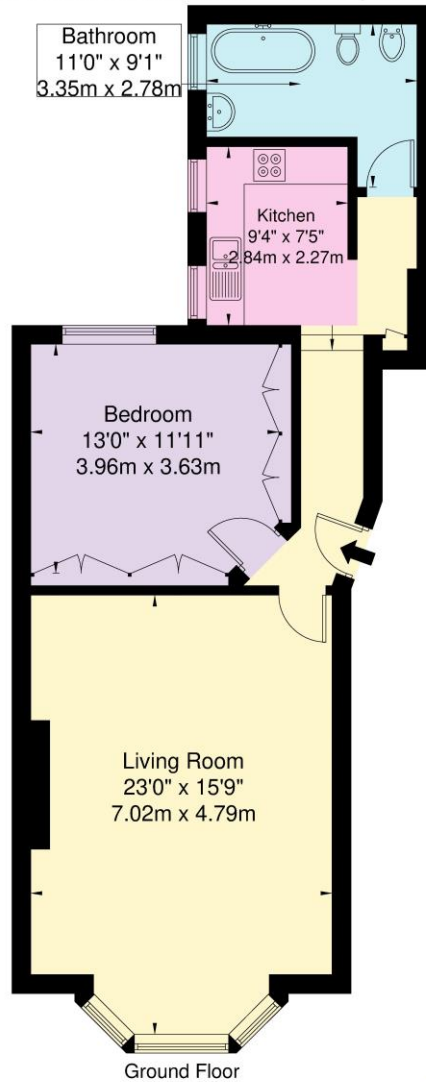
LOCAL AUTHORITY AND COUNCIL TAX BAND:

Royal Borough of Kensington and Chelsea (Band F)



Colville Gardens, W11 2BA

Approx. Gross Internal Area = 69.0 sq m / 743 sq ft



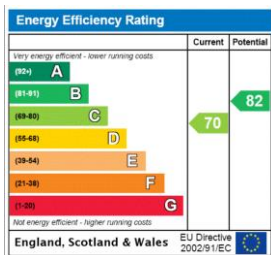
Ref

Copyright **BLEUPLAN**

The Floor plan is not to scale and measurements and areas shown are approximate and therefore should be used for illustrative purposes only. The plan has been prepared in accordance with the RICS code of Measuring Practice and whilst we have confidence in the information produced it must not be relied on. If there is any aspect of particular importance, you should carry out or commission your own inspection of the property.

Copyright @ BLEUPLAN

This floorplan is for illustration purposes only and is not to scale. The position and size of doors, windows, appliances and other features are approximate.



Notting Hill Sales | 0207 727 3227 | nottinghill@winkworth.co.uk



winkworth.co.uk

for every step...

winkworth wishes to inform prospective buyers and tenants that these particulars are a guide and act as information only. All our details are given in good faith and believed to be correct at the time of printing but they don't form part of an offer or contract. No Winkworth employee has authority to make or give any representation or warranty in relation to this property. All fixtures and fittings, whether fitted or not are deemed removable by the vendor unless stated otherwise and room sizes are measured between internal wall surfaces, including furnishings.