



**WHITELANDS HOUSE, CHELTENHAM TERRACE, LONDON, SW3**  
**£2,244.67pcm / £518pw - FURNISHED**

**BRIGHT ONE BEDROOM FLAT ON THE SIXTH FLOOR (LIFT) OF A HIGHLY DESIRABLE PORTERED BUILDING.**

**Knightsbridge & Chelsea | 0207 589 6616 | [knightsbridge@winkworth.co.uk](mailto:knightsbridge@winkworth.co.uk)**

Tenant Fees Apply: Details of fees for tenant referencing, tenancy agreement admin fees and renewal fees are available on the Winkworth website and the link can be found with the displayed rent for the property. Tenants should ensure they are fully conversant with these upfront fees and other costs that are involved at the outset of the tenancy before making an offer to rent and your local Winkworth office will provide written details upon request.



## DESCRIPTION:

Whitelands House is located just off the Kings Road and moments from Sloane Square. It has the benefit of smart common areas, round the clock portorage and multiple passenger lifts.

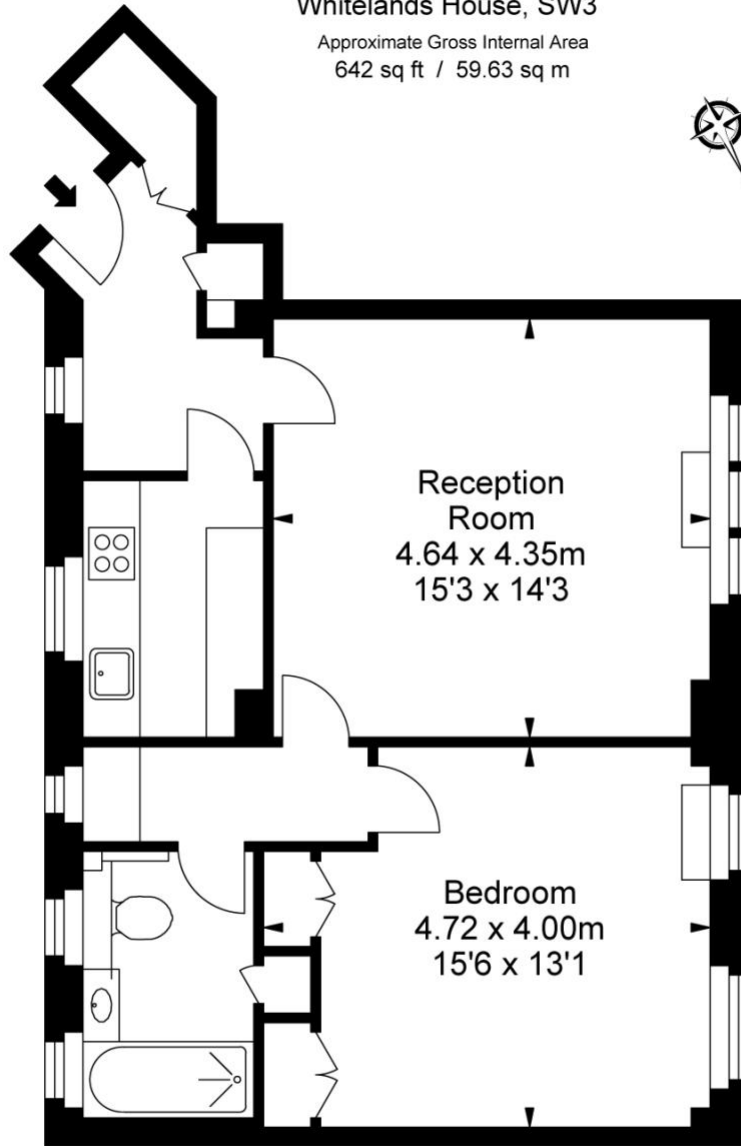
The apartment itself is presented in superb condition with incredible views across London. The flat also benefits from excellent storage, wood floors and a modern style. The kitchen is fully integrated with a full sized dishwasher and washing machine. Heating and hotwater are included in the rent.

Council RBKC - Tax band E



# Whitelands House, SW3

Approximate Gross Internal Area  
642 sq ft / 59.63 sq m



Sixth Floor

ILLUSTRATION FOR IDENTIFICATION PURPOSES ONLY

ALL MEASUREMENTS ARE MAXIMUM, AND INCLUDE WINDOW BAYS AND WARDROBES WHERE APPLICABLE  
THIS PLAN MUST NOT BE REPRODUCED BY ANY OTHER PERSON WITHOUT PERMISSION

This floorplan is for illustration purposes only and is not to scale. The position and size of doors, windows, appliances and other features are approximate.

