



BENNETT STREET, W4
£399,950 TO BE ADVISED

TWO DOUBLE BEDROOM PURPOSE BUILT APARTMENT

Chiswick | 020 8994 7096 | chiswick@winkworth.co.uk

Winkworth

for every step...

winkworth.co.uk



DESCRIPTION:

A generously proportioned two double bedroom duplex apartment ideally nestled within the heart of Chiswick within easy access to Turnham Green and Brook Green (Zone 2) District Line and Piccadilly Line.

Offered with full vacant possession, the accommodation is well presented and boasts bright and airy living accommodation.

Lift serviced on the upper floors of this low rise block with a front aspect kitchen/breakfast room, good size lounge with direct access to a South Westerly aspect balcony. The first floor offers two double bedrooms and a good size family bathroom. With ample storage, on road resident's parking and no onward chain. An early internal inspection is highly recommended to avoid disappointment.

For details of the leasehold, including the length of lease, annual service charge and ground rent, please contact the Winkworth, Chiswick.

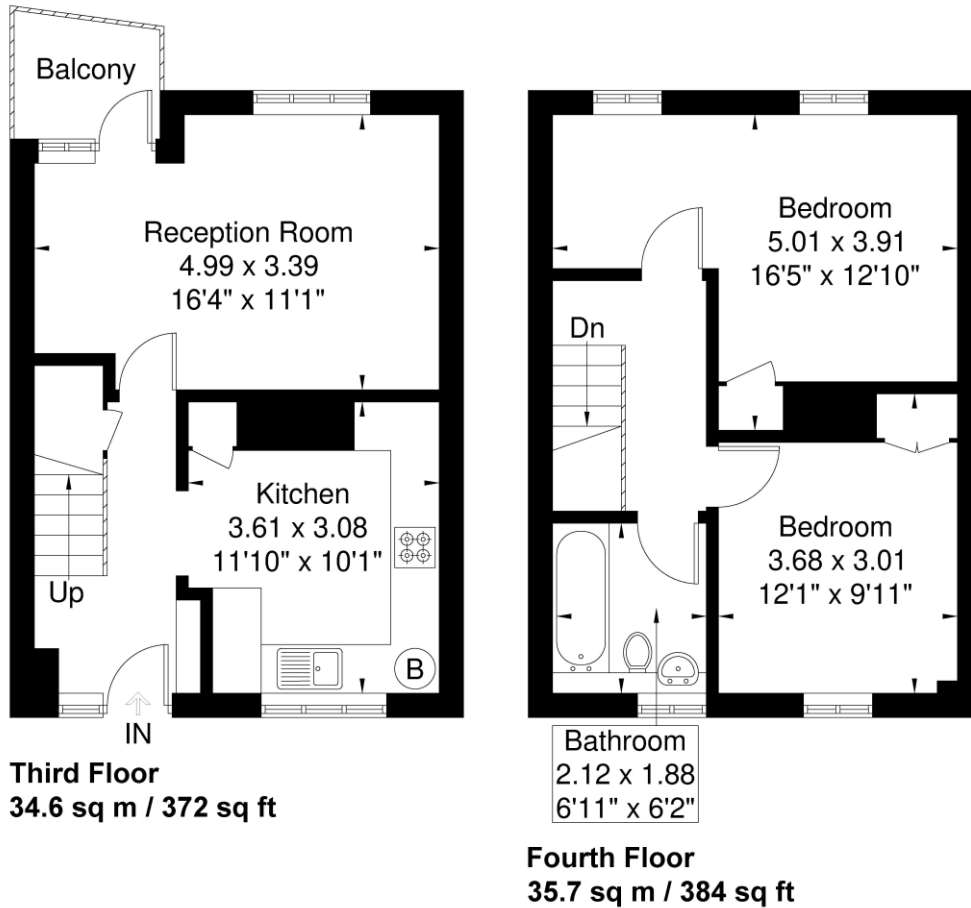
ACCOMMODATION

2 Bedrooms,
1 Reception Room,
1 Bathroom,
Balcony,
Communal Gardens,
Residents Parking,



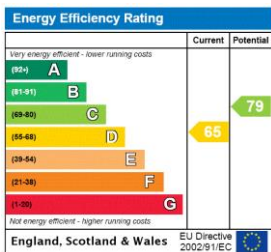
Hamilton House

Approximate Gross Internal Area = 70.3 sq m / 756 sq ft



Although every attempt has been made to ensure accuracy, all measurements are approximate. The floorplan is for illustrative purposes only and not to scale.
© www.perspective.co.uk

This floorplan is for illustration purposes only and is not to scale. The position and size of doors, windows, appliances and other features are approximate.



Chiswick | 020 8994 7096 | chiswick@winkworth.co.uk



for every step...

winkworth.co.uk

Winkworth wishes to inform prospective buyers and tenants that these particulars are a guide and act as information only. All our details are given in good faith and believed to be correct at the time of printing but they don't form part of an offer or contract. No Winkworth employee has authority to make or give any representation or warranty in relation to this property. All fixtures and fittings, whether fitted or not are deemed removable by the vendor unless stated otherwise and room sizes are measured between internal wall surfaces, including furnishings.