



LANDCROFT ROAD, EAST DULWICH, SE22  
OIEO £750,000 FREEHOLD

**A SPACIOUS FAMILY HOME, SET WITHIN A  
HIGHLY SOUGHT-AFTER LOCATION IN SE22  
OFFERED TO THE MARKET CHAIN FREE.**

Dulwich | 020 8299 2722 | [dulwich@winkworth.co.uk](mailto:dulwich@winkworth.co.uk)

**Winkworth**

*winkworth.co.uk*

See things differently



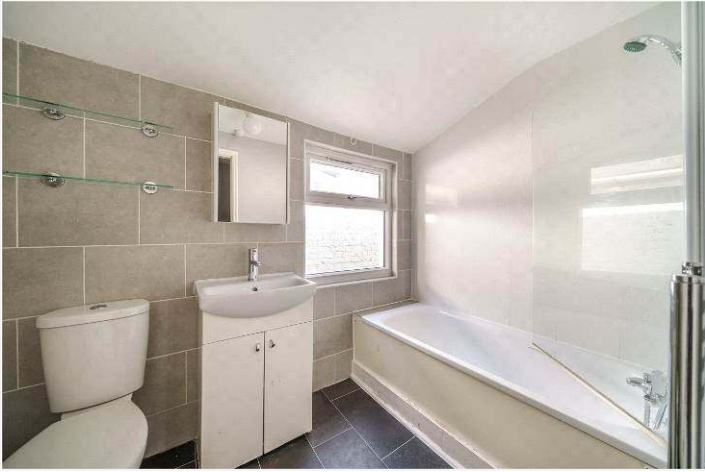
## DESCRIPTION:

A spacious family home, set within a highly sought-after location in SE22. Comprising three double bedrooms, a family bathroom, a large double reception, and a spacious eat-in kitchen/ diner. The property boasts a large private garden and is situated moments away from Lordship Lane whilst nestled on a lovely, quiet, residential street. The property boasts fantastic school catchments with Harris and Heber to name a couple. Transport links are situated within a short walk and benefit from easy access to London Bridge via East Dulwich Station or the overground via Denmark Hill or Peckham Rye.

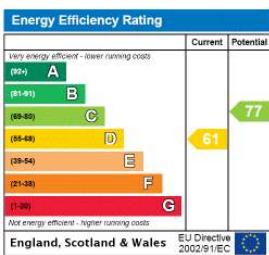
Council Tax Band D

## AT A GLANCE

- Three Double Bedrooms
- Victorian Terraced House
- Double Reception
- Eat-in Kitchen-Diner
- Garden
- School Catchment Area
- Chain Free



This floorplan is for illustration purposes only and is not to scale. The position and size of doors, windows, appliances and other features are approximate.



Dulwich | 020 8299 2722 | [dulwich@winkworth.co.uk](mailto:dulwich@winkworth.co.uk)



[winkworth.co.uk](http://winkworth.co.uk)

See things differently

Winkworth wishes to inform prospective buyers and tenants that these particulars are a guide and act as information only. All our details are given in good faith and believed to be correct at the time of printing but they don't form part of an offer or contract. No Winkworth employee has authority to make or give any representation or warranty in relation to this property. All fixtures and fittings, whether fitted or not are deemed removable by the vendor unless stated otherwise and room sizes are measured between internal wall surfaces, including furnishings.