



20 TAMARISK RISE, WOKINGHAM, BERKSHIRE, RG40 1WG
£350,000 FREEHOLD

Winkworth



TAMARISK RISE

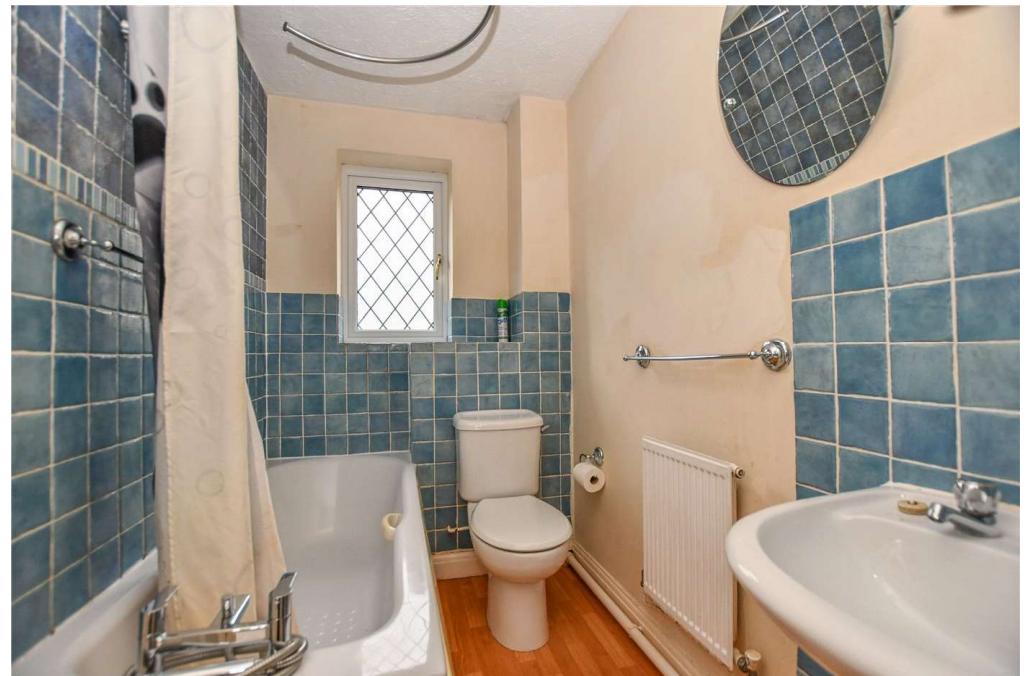
Situated in one of Wokingham's most desirable locations, Glebe Park, is this charming terraced house. The Glebe Park development has always been extremely popular due to its close proximity to Wokingham town centre, schools and access to Cantley Park.

This property itself boasts two double bedrooms, an inviting reception room, kitchen and bathroom. It also benefits from a lovely south east facing rear garden, double glazed windows, gas central heating and residents parking to the front.

This terraced house presents an ideal opportunity for first-time buyers, small families, or investors looking for a property with great potential. Don't miss out on the chance to make this house your home.

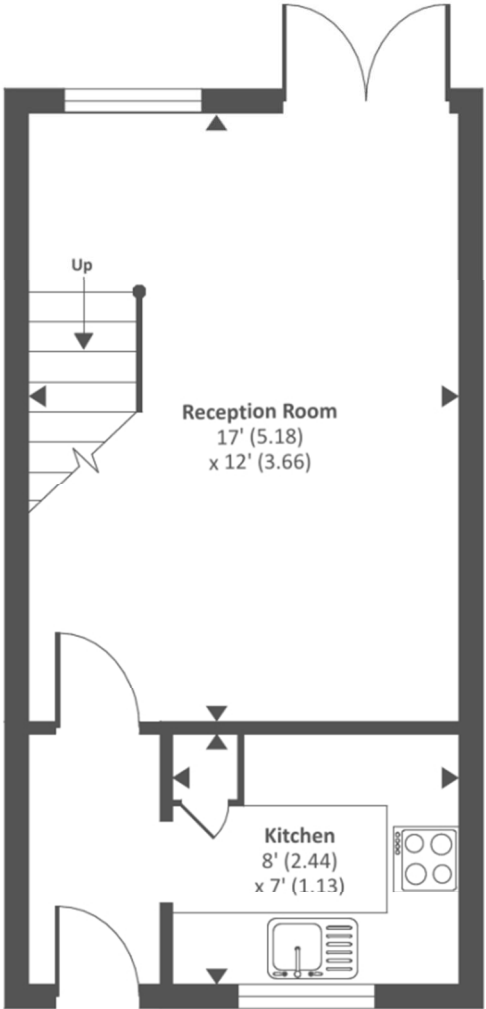
EPC: C



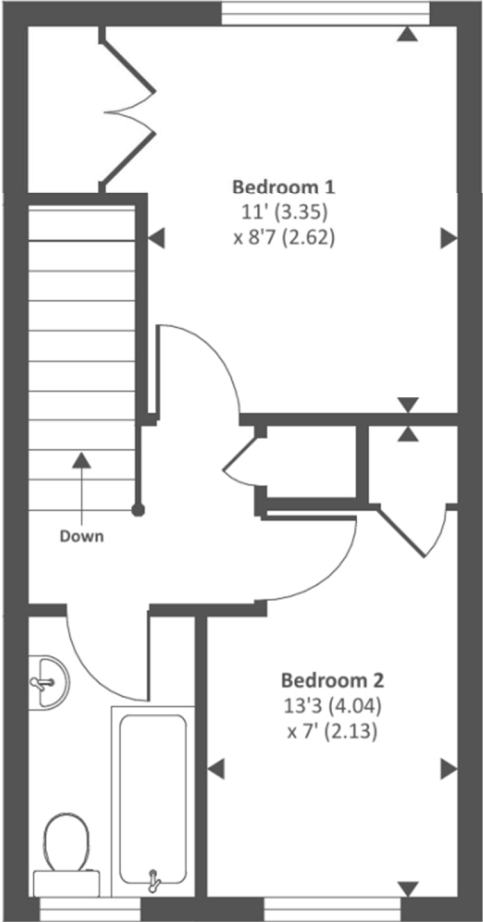


Approximate Area = 584 sq ft / 54.3 sq m

For identification only - Not to scale



Ground floor



First floor

Wokingham | 01189 072777 | wokingham@winkworth.co.uk



Winkworth wishes to inform prospective buyers and tenants that these particulars are a guide and act as information only. All our details are given in good faith and believed to be correct at the time of printing but they don't form part of an offer or contract. No Winkworth employee has authority to make or give any representation or warranty in relation to this property. All fixtures and fittings, whether fitted or not are deemed removable by the vendor unless stated otherwise and room sizes are measured between internal wall surfaces, including furnishings.