



RIVERSIDE HOUSE, READING, BERKSHIRE, RG1 6BJ
£2,150 PER MONTH FURNISHED

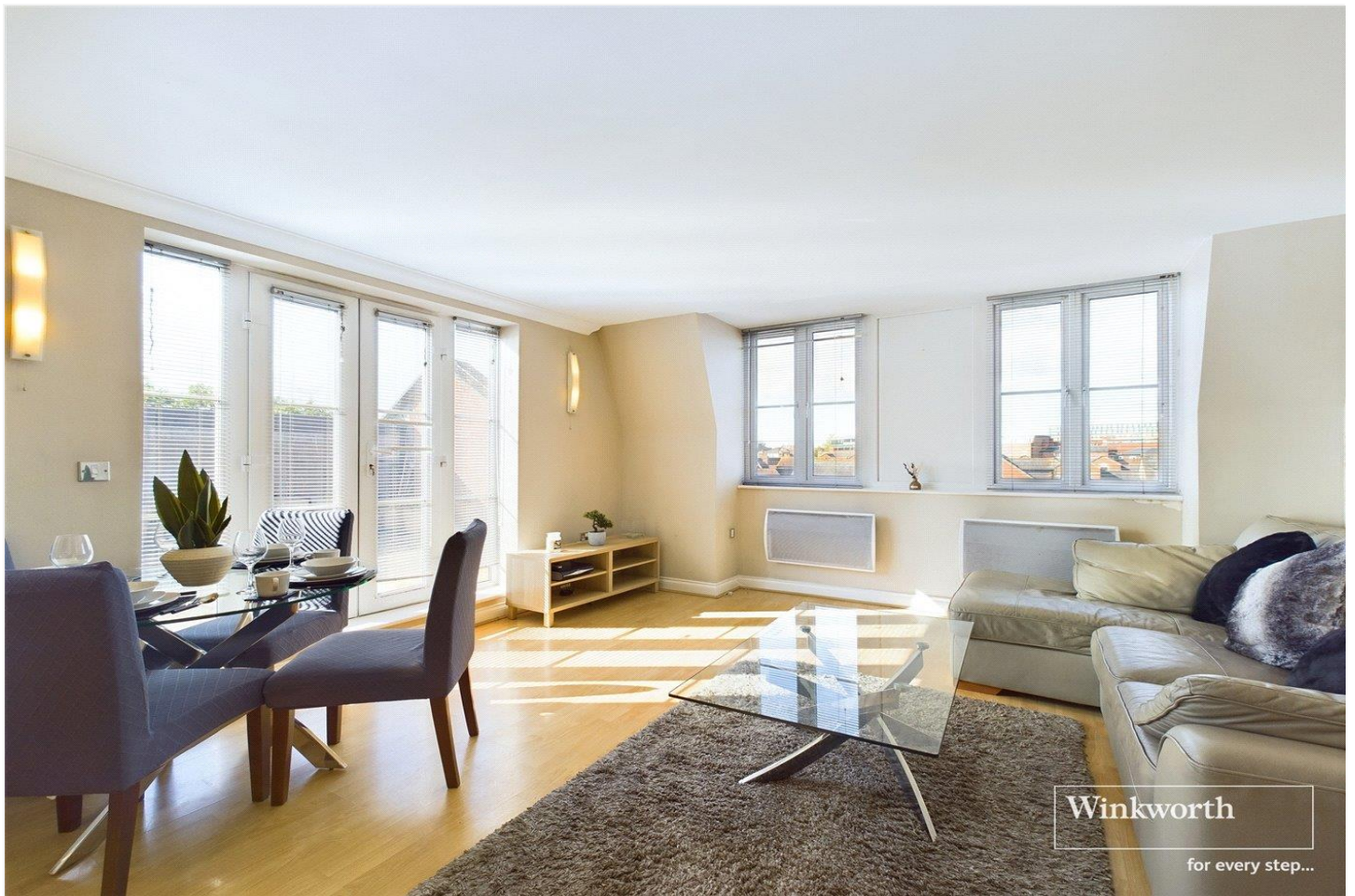
TWO BEDROOM PENTHOUSE IN READING TOWN CENTRE WITH PRIVATE 30FT TERRACE

Reading | 0118 4022 300 | reading@winkworth.co.uk

Winkworth

for every step...

winkworth.co.uk



DESCRIPTION:

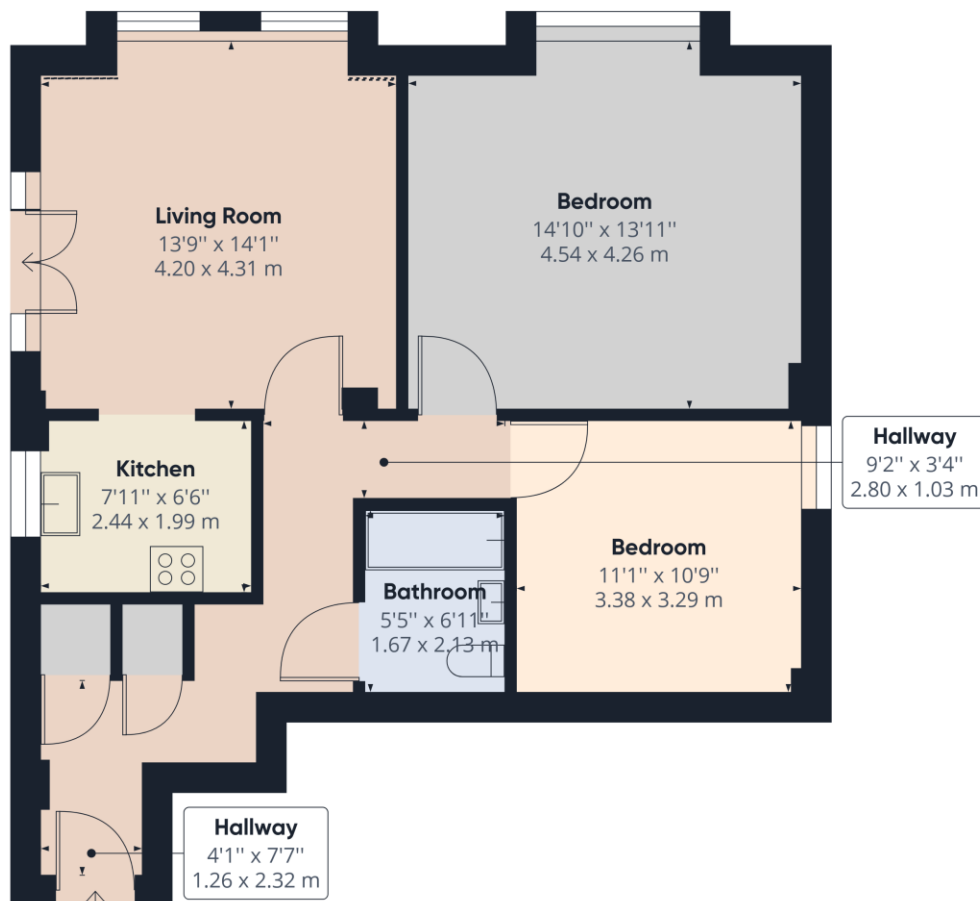
Two double bedroom penthouse apartment with private 30ft terrace, located in Riverside House, which is just 2 minutes walk away from The Oracle shopping centre. Internally, the apartment consists of a luxury fitted kitchen and a spacious living/dining area, The apartment also benefits from an intercom system and secure allocated parking space. Available now. Furnished.

AT A GLANCE

- Two bedroom penthouse apartment
- Town centre location
- 30ft private terrace
- Council tax band D
- Secure allocated parking space
- Available now
- Furnished







Approximate total area⁽¹⁾
735.21 ft²
68.30 m²

Reduced headroom
0.89 ft²
0.08 m²

(1) Excluding balconies and terraces

Reduced headroom
(below 1.5m/4.92ft)

While every attempt has been made to ensure accuracy, all measurements are approximate, not to scale. This floor plan is for illustrative purposes only.

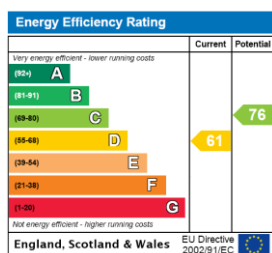
GIRAFFE 360

This floorplan is for illustration purposes only and is not to scale. The position and size of doors, windows, appliances and other features are approximate.

Deposit: £2,480.77

Council Tax Band: D

Where no figures are shown, we have been unable to ascertain the information. All figures that are shown were correct at the time of printing.



Reading | 0118 4022 300 | reading@winkworth.co.uk

Winkworth

for every step...

winkworth.co.uk

Winkworth wishes to inform prospective buyers and tenants that these particulars are a guide and act as information only. All our details are given in good faith and believed to be correct at the time of printing but they don't form part of an offer or contract. No Winkworth employee has authority to make or give any representation or warranty in relation to this property. All fixtures and fittings, whether fitted or not are deemed removable by the vendor unless stated otherwise and room sizes are measured between internal wall surfaces, including furnishings.