



## VALE CLOSE, W9 £6,250,000 FREEHOLD

Introducing a stunning, freehold, six bedroom (3,090 sq. ft.) detached Mock Tudor house, flooded with a wealth of natural light, nestled within this desirable, secure private close with electric gates, garage and parking. The raised ground floor enjoys a large entrance hall leading into a grand reception and dining room with high ceilings (2.74 metres), double doors opening onto a large south facing mature private garden and a separate kitchen/breakfast room. A grand staircase leads up to the first floor with three large bedrooms with two ensembles and a separate shower room. The third floor has three double bedrooms, a bathroom and a large utility room. Vale Close is located in the heart of this fashionable area, close to all the amenities including the boutique shops, cafes on Clifton Road, the famous Regent's Canal (0.4 miles) and the Underground at Warwick Avenue (Bakerloo line - 0.5 miles).

Principal Bedroom With En Suite Bathroom | Second Bedroom With En Suite Shower Room |  
Four Further Bedrooms | Family Bathroom | Shower Room | Guest WC | Reception Room | Dining  
Room | Kitchen/Breakfast Room | Entrance Hallway | Front & Back Garden | Garage | Shed |  
Freehold

View our virtual tour here: <https://youtu.be/rMFDtIJVmuw>

[winkworth.co.uk/maida-vale](https://www.winkworth.co.uk/maida-vale)

**Winkworth**

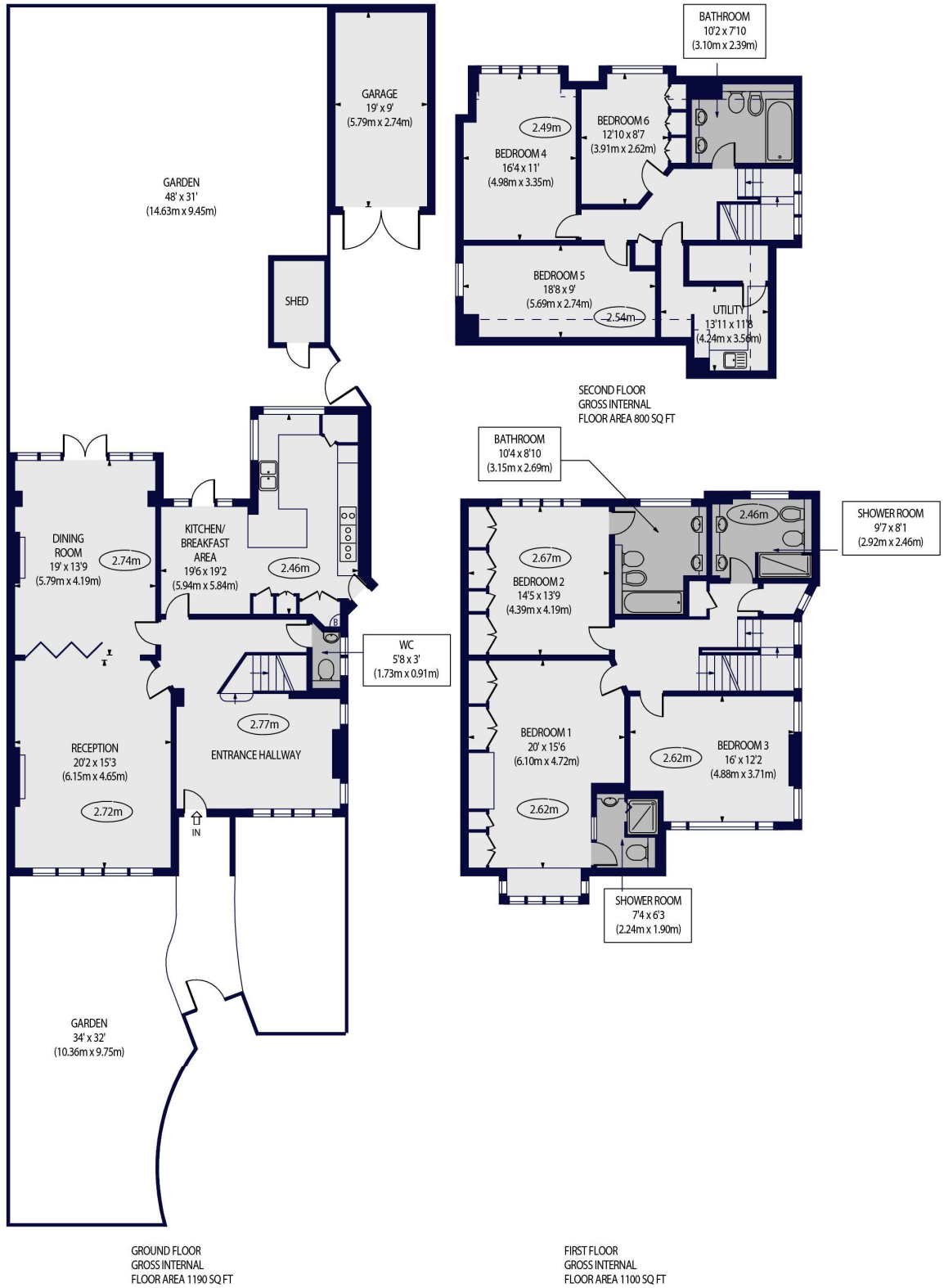
for every step...



VALE CLOSE, LONDON, W9 1RR

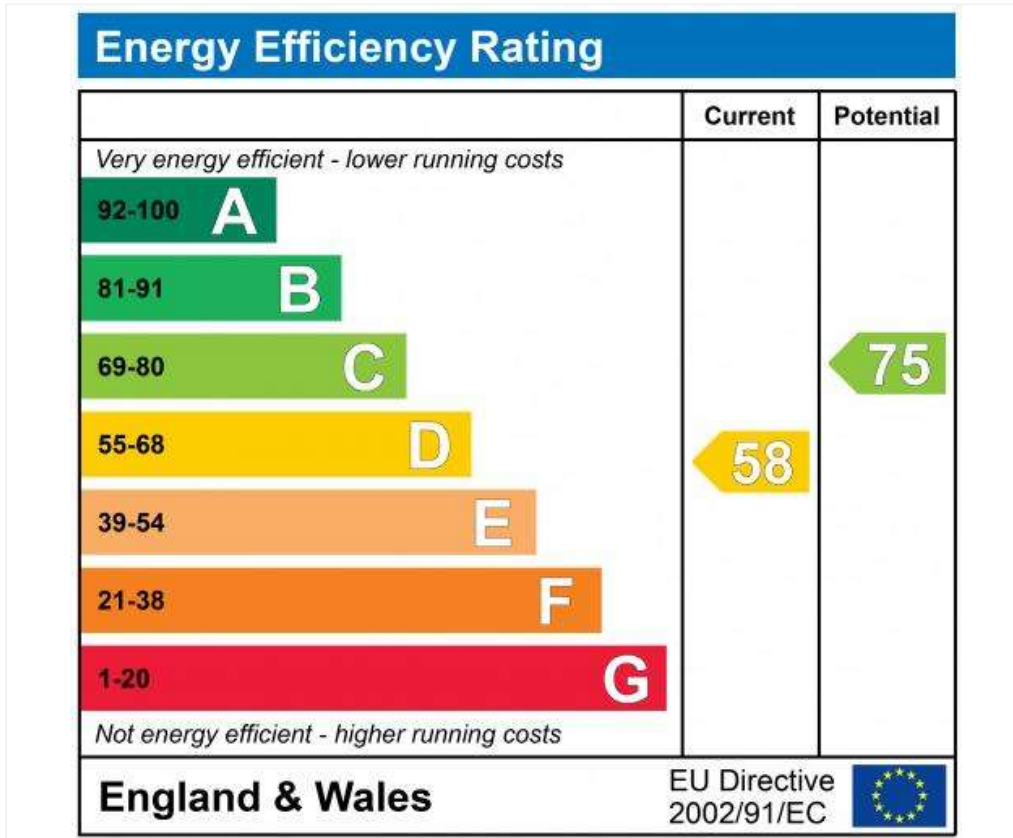
Approx. Gross Internal Floor Area 3090 sq ft. / 287 sq.m  
(Excluding Shed & Garage)

○ - Ceiling Height



For Illustration Purposes Only - Not To Scale Floor Plan by www.nogaphotostudio.com Ref: No.45176  
This floor plan should be used as a general outline for guidance only. Any intending purchaser or lessee should satisfy themselves by inspection, searches, enquiries and full survey as to the correctness of each statement. Any areas, measurements or distances quoted are approximate and should not be used to value a property or be the basis of any sale or let.





**Tenure:** Freehold  
**Term:** Freehold  
**Service Charge:** £200 per annum  
**Ground Rent:** N/A  
**Council Tax Band:** H

Where no figures are shown, we have been unable to ascertain the information. All figures that are shown were correct at the time of printing.

Where no figures are shown, we have been unable to ascertain the information. All figures that are shown were correct at the time of printing. These particulars are not an offer or contract, nor part of one. You should not rely on statements by Winkworth in the particulars or by word of mouth or in writing "information" as being factually accurate about the property, its condition or its value. Winkworth does not have any authority to make any representations about the property, and accordingly any information given is entirely without responsibility on the part of the agents, seller(s) or lessor(s). These particulars are prepared on the basis of the information supplied by our client and are a rough guide for information only. The photographs show only certain parts of the property. We are not able to check all of the information and therefore are unable to guarantee accuracy. All interested parties are therefore advised to undertake all necessary inspections and checks that they deem appropriate. Where displayed, the square footage is taken from the floor plans, which are created by an independent supplier. These measurements are approximate and included for illustrative purposes only. The measurements may vary. Winkworth does not make any representation as to the accuracy of these measurements and you should seek to verify them for yourself. Winkworth accept no liability for any loss you may suffer if you rely on these measurements. All fixtures and fittings, whether fitted or not are deemed removable by the vendor unless stated. Any reference to alterations to, or use of, any part of the property does not mean that any necessary planning, building regulations or other consent has been obtained. Amenities and appliances have not been tested

Maida Vale | 211-213 Sutherland Avenue, London, W9 1RU | 020 7289 1692



for every step...

[winkworth.co.uk/maida-vale](http://winkworth.co.uk/maida-vale)

Winkworth wishes to inform prospective buyers and tenants that these particulars are a guide and act as information only. All our details are given in good faith and believed to be correct at the time of printing but they don't form part of an offer or contract. No Winkworth employee has authority to make or give any representation or warranty in relation to this property. All fixtures and fittings, whether fitted or not are deemed removable by the vendor unless stated otherwise and room sizes are measured between internal wall surfaces, including furnishings.