

ST. LAWRENCE TERRACE, LONDON, W10
£15,000 PER MONTH UNFURNISHED

STUNNING FIVE BEDROOM VICTORIAN HOUSE ON PREMIER ROAD IN LADBROKE GROVE NOTTING HILL

North Kensington | 020 7792 5000 | northkensington@winkworth.co.uk

Tenant Fees Apply: Details of fees for tenant referencing, tenancy agreement admin fees and renewal fees are available on the Winkworth website and the link can be found with the displayed rent for the property. Tenants should ensure they are fully conversant with these upfront fees and other costs that are involved at the outset of the tenancy before making an offer to rent and your local Winkworth office will provide written details upon request.

winkworth.co.uk

Winkworth

for every step...



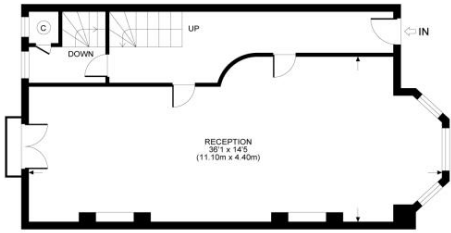
An outstanding substantial Victorian family house comprising of 2822 sq. ft of internal square footage, benefiting from five double bedrooms, three modern shower rooms, one large family bathroom, offering a garden in the front and the back of the property. For entertaining space there is a double reception room and a kitchen/breakfast diner.

AT A GLANCE

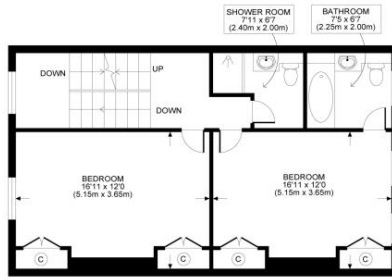
- House
- 5 Bedrooms
- 5 Bathrooms
- 2 Reception Room
- Garden
- Unfurnished



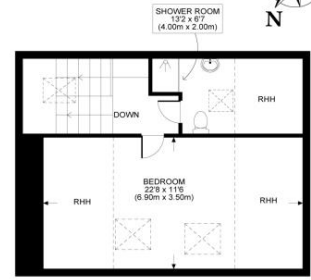




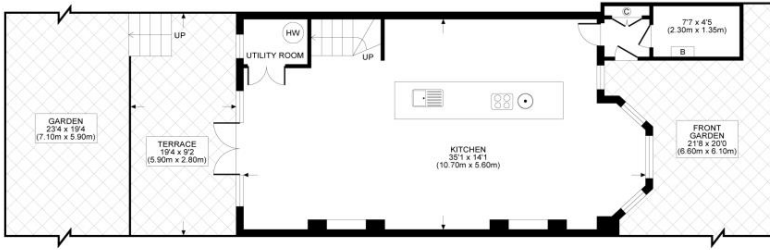
GROUND FLOOR
 GROSS INTERNAL
 FLOOR AREA 621 SQ. FT.



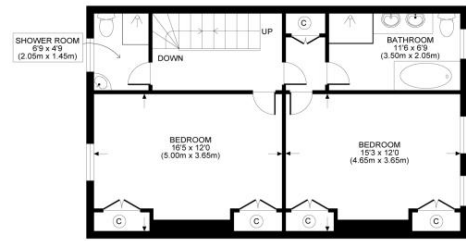
SECOND FLOOR
 GROSS INTERNAL
 FLOOR AREA 619 SQ. FT.



THIRD FLOOR
 GROSS INTERNAL
 FLOOR AREA 316 SQ. FT.



LOWER GROUND FLOOR
 GROSS INTERNAL
 FLOOR AREA 675 SQ. FT.



FIRST FLOOR
 GROSS INTERNAL
 FLOOR AREA 609 SQ. FT.



All measurements walls, doors, windows, fittings and their appliances, their size and locations are shown conventionally and are approximate only and cannot be regarded as being a representation either by the seller or his agent nor zentuvo
www.zentuvo.co.uk

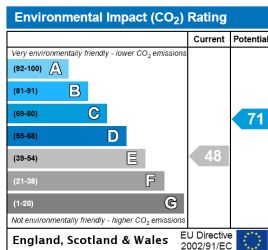
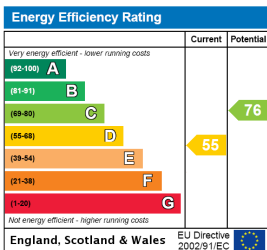
This floorplan is for illustration purposes only and is not to scale. The position and size of doors, windows, appliances and other features are approximate.

Deposit: £0.00

Holding Deposit:

Council Tax Band:

Where no figures are shown, we have been unable to ascertain the information. All figures that are shown were correct at the time of printing.



North Kensington | 020 7792 5000 | northkensington@winkworth.co.uk