



LORDSHIP LANE, EAST DULWICH, SE22
£450,000 LEASEHOLD

**THIS LOVELY TWO-BEDROOM MAISONETTE
IS SITUATED IN A FANTASTIC LOCATION ON
LORDSHIP LANE.**

Dulwich | 020 8299 2722 | dulwich@winkworth.co.uk

Winkworth

winkworth.co.uk

See things differently

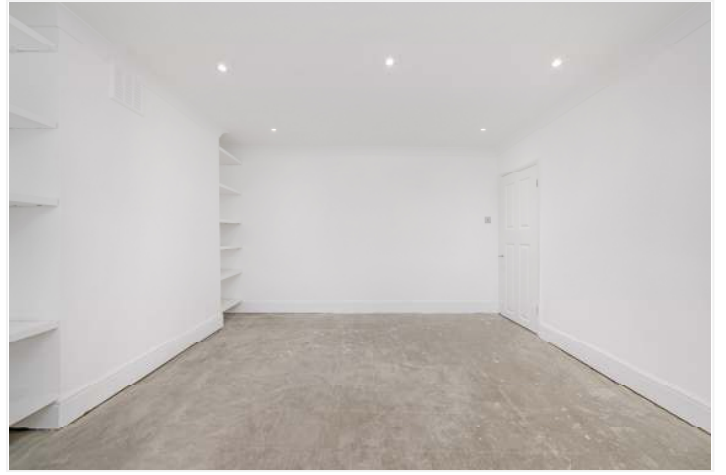


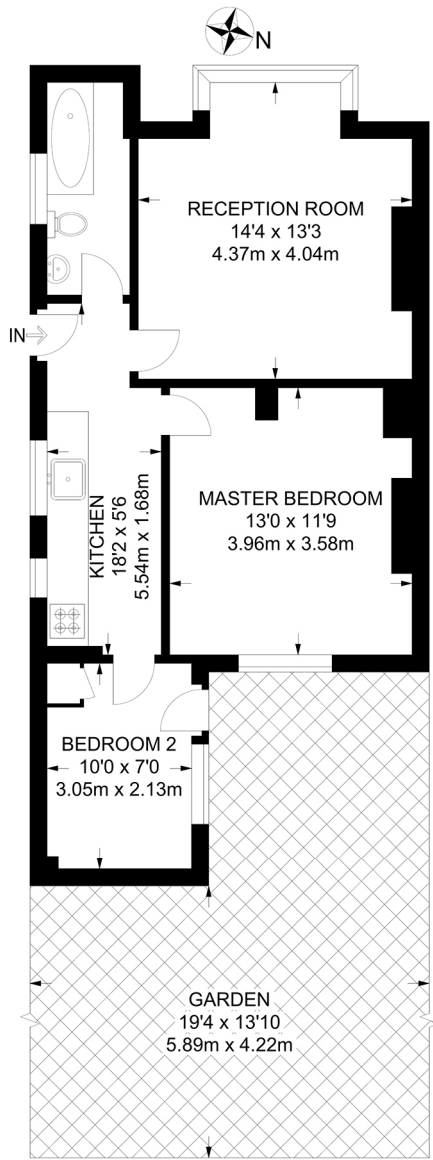
DESCRIPTION:

This lovely two bedroom maisonette is situated in a fantastic location on Lordship Lane. Boasting a large living room, with built to measure shutters and high ceilings. The bathroom has recently been fully renovated to a modern sleek finish including a new heated towel rail. The kitchen is brand new, boasting built in brand new appliances and underfloor heating. There is a very large double bedroom and a further smaller bedroom with views out to the private section of the garden. The property is located on Lordship Lane, a short walk to the bars, restaurants, pubs, shops and cinema. It is also within a very short distance to Dulwich Village and Dulwich Park. This is a great flat in a great location and early viewings are highly recommended.

AT A GLANCE

- Two Double Bedrooms
- Maisonette
- Large Living Room
- Separate Kitchen
- Modern Bathroom
- Private Section Of Garden
- Long Lease
- Chain Free

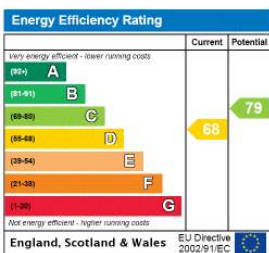




LOWER GROUND FLOOR

APPROXIMATE GROSS INTERNAL AREA
545 SQ FT / 50.6 SQ M

This floorplan is for illustration purposes only and is not to scale. The position and size of doors, windows, appliances and other features are approximate.



Dulwich | 020 8299 2722 | dulwich@winkworth.co.uk



winkworth.co.uk

See things differently

Winkworth wishes to inform prospective buyers and tenants that these particulars are a guide and act as information only. All our details are given in good faith and believed to be correct at the time of printing but they don't form part of an offer or contract. No Winkworth employee has authority to make or give any representation or warranty in relation to this property. All fixtures and fittings, whether fitted or not are deemed removable by the vendor unless stated otherwise and room sizes are measured between internal wall surfaces, including furnishings.