



CHARLOTTE MEWS, W10
£620,000 LEASEHOLD

FANTASTIC TWO BEDROOM MEWS HOUSE WITH FRONT GARDEN AND PARKING SPACE /BACK GARDEN

North Kensington | 020 7792 5000 | northkensington@winkworth.co.uk

Winkworth

for every step...

winkworth.co.uk



DESCRIPTION:

This well planned two-bedroom mews house is located just moments from the wonders of Portobello Market and Golborne Road. The terrace house is laid out over two storeys. The ground floor includes a large living/ dining room, fully fitted kitchen which leads out to an outside space that can be used as a garden or parking space. On the first floor there are two double bedrooms and family bathroom and separate WC. The house feels incredibly spacious throughout and would make an ideal family home or investment.

Transport links can be found close by at Ladbroke Grove (Hammersmith & City line) and Latimer Road (Hammersmith & City line) underground stations, as well as a variety of shops, cafes and restaurants on Portobello Road and Golborne Road.

AT A GLANCE

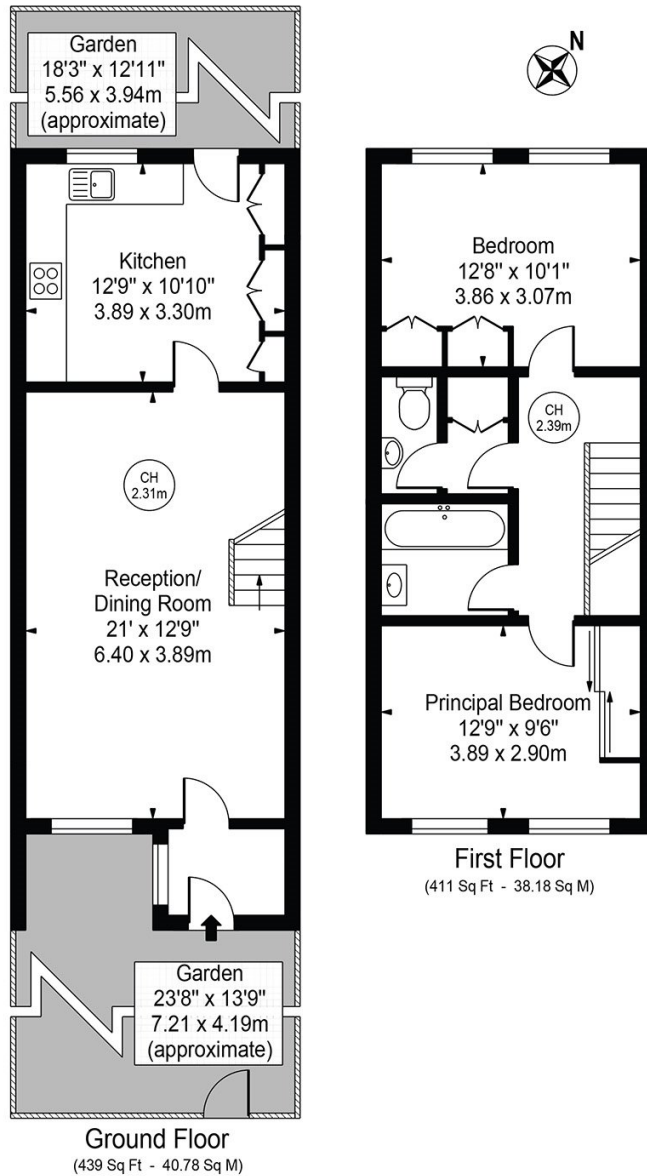
- Mews House
- Private Parking/Back Garden
- Beautiful Mature Front Garden
- Two Double Bedrooms
- Large Separate Kitchen
- Great Location
- EPC Rating C
- Leasehold 93 Years
- Service Charges £1260 pa





Charlotte Mews

Approx. Gross Internal Area 850 Sq Ft - 78.97 Sq M

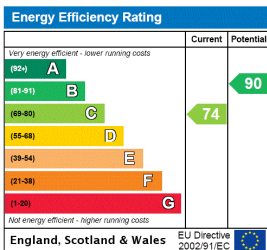


For Illustration Purposes Only - Not To Scale

This floor plan should be used as a general outline for guidance only and does not constitute in whole or in part an offer or contract. Any intending purchaser or lessee should satisfy themselves by inspection, searches, enquiries and full survey as to the correctness of each statement. Any areas, measurements or distances quoted are approximate and should not be used to value a property or be the basis of any sale or let.

Copyright Morriarti Photography & Design LTD

This floorplan is for illustration purposes only and is not to scale. The position and size of doors, windows, appliances and other features are approximate.



North Kensington | 020 7792 5000 | northkensington@winkworth.co.uk



for every step...

winkworth.co.uk

Winkworth wishes to inform prospective buyers and tenants that these particulars are a guide and act as information only. All our details are given in good faith and believed to be correct at the time of printing but they don't form part of an offer or contract. No Winkworth employee has authority to make or give any representation or warranty in relation to this property. All fixtures and fittings, whether fitted or not are deemed removable by the vendor unless stated otherwise and room sizes are measured between internal wall surfaces, including furnishings.