



GAUDEN ROAD, SW4
£475,000 SHARE OF FREEHOLD

A BEAUTIFUL, SPACIOUS ONE-BEDROOM VICTORIAN FLAT WITH A GARDEN IN CLAPHAM

Streatham | 020 8769 6699 | streatham@winkworth.co.uk

Winkworth

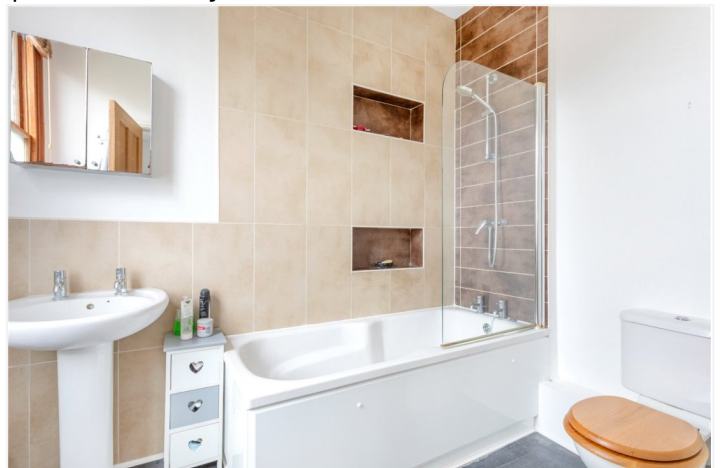
for every step...

winkworth.co.uk



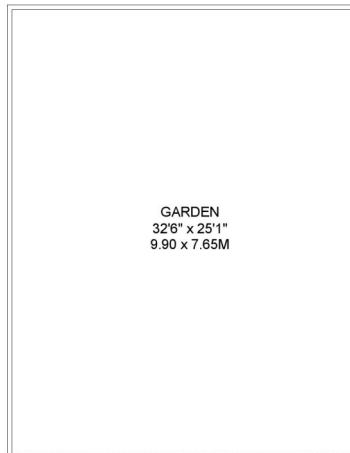
DESCRIPTION:

A beautiful, spacious one-bedroom Victorian flat with a garden for sale in Clapham. The flat is found just off Clapham High Street, on a quiet tree lined residential street, and within very close proximity to Clapham Old Town and Clapham Common, and all the amenities the area has to offer. Enter the flat on the first floor, and you are greeted by a small entrance hall, to the left of which is ample space for a washer/dryer as well as fantastic storage. The kitchen to the rear of the flat offers pretty views overlooking the garden below and is generous in size allowing for a kitchen table and chairs. The kitchen is equipped with built in electric fan-powered oven and gas hob with extraction and sink, with space for a large fridge/freezer. There is plenty of worktop space available with storage found both above and below the kitchen units. The sitting room to the right as you enter the flat, is light and airy again offering views on to the garden behind. This room is carpeted with high ceilings and features a cast iron Victorian fireplace. There is ample space to accommodate plenty of furniture as well as space for a desk for those working from home. Through the sitting room and at the front of the flat, you will find the bedroom which is spacious and airy thanks to two large sash windows allowing for plenty of natural light and welcoming views over the pretty Victorian terrace below. The bedroom provides space to accommodate a king size bed and additional free-standing furniture. The bathroom attached to the bedroom, offers a tiled bath with overhead shower, sink with vanity, heated towel rail and W.C. The south-west garden to the rear, is currently divided into three equal parts belonging to the three flats within the building, with the very rear being demised to this flat. The garden provides a pergola, excellent for entertaining, a garden shed offering further storage, and mature garden beds at the rear boundary. Please note that the garden is currently open and not separated or fenced off, but one would be within their rights to separate should they wish.

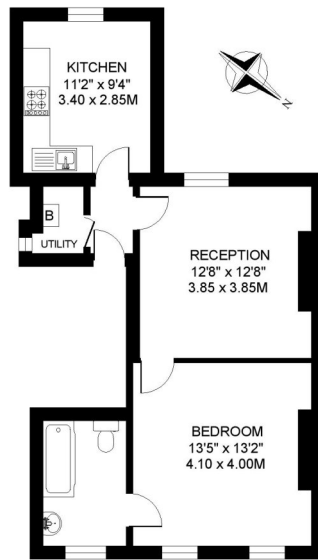




GAUDEN ROAD SW4
 1 BEDROOM FLAT
 Approximate gross floor area
 546 SQ.FT. / 50.7 SQ.M.



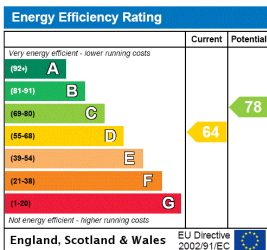
GARDEN
 32'6" x 25'1"
 9.90 x 7.65M



FIRST FLOOR

Copyright: These plans should not be reproduced by any other person, without permission.
 Floorplan produced for Winkworth by Floorplanners 07801 228850

This floorplan is for illustration purposes only and is not to scale. The position and size of doors, windows, appliances and other features are approximate.



Tenure: Share of Freehold
Term: Expires - 21/03/3009
Council Tax Band: C

Where no figures are shown, we have been unable to ascertain the information. All figures that are shown were correct at the time of printing.

Streatham | 020 8769 6699 | streatham@winkworth.co.uk



for every step...

winkworth.co.uk

Winkworth wishes to inform prospective buyers and tenants that these particulars are a guide and act as information only. All our details are given in good faith and believed to be correct at the time of printing but they don't form part of an offer or contract. No Winkworth employee has authority to make or give any representation or warranty in relation to this property. All fixtures and fittings, whether fitted or not are deemed removable by the vendor unless stated otherwise and room sizes are measured between internal wall surfaces, including furnishings.