



FURZEHILL ROAD, HERTFORDSHIRE, WD6
£995,000 FREEHOLD

A CHAIN FREE FOUR/FIVE BEDROOM FAMILY HOUSE IN SOUTH BOREHAMWOOD

Borehamwood | 020 8953 8899 | borehamwood@winkworth.co.uk



DESCRIPTION:

Located in a quiet slip road, just off Furzehill Road on the South side of Borehamwood is this much improved and extended Four/Five bedroom semi detached family house.

Offered for sale Chain Free, the property provides spacious and flexible family accommodation totalling in excess of 1800 Square feet whilst still offering scope for further extension subject to the usual planning consents. Highly desirable "Outstanding" and "Good" rated Ofsted schools are located nearby in including Yavneh, Summerswood and Monksmead.

AT A GLANCE

- 4/5 Bedrooms
- 1828 Square Feet
- Chain Free
- South Borehamwood
- Large Rear Garden
- Downstairs Shower/Utility Room
- Generous Off Street Parking
- Garage





Winkworth



Winkworth



Winkworth



Winkworth



Winkworth

Approximate Gross Internal Area = 169.8 sq m / 1828 sq ft
 Garage = 15.5 sq m / 167 sq ft
 Total = 185.3 sq m / 1995 sq ft

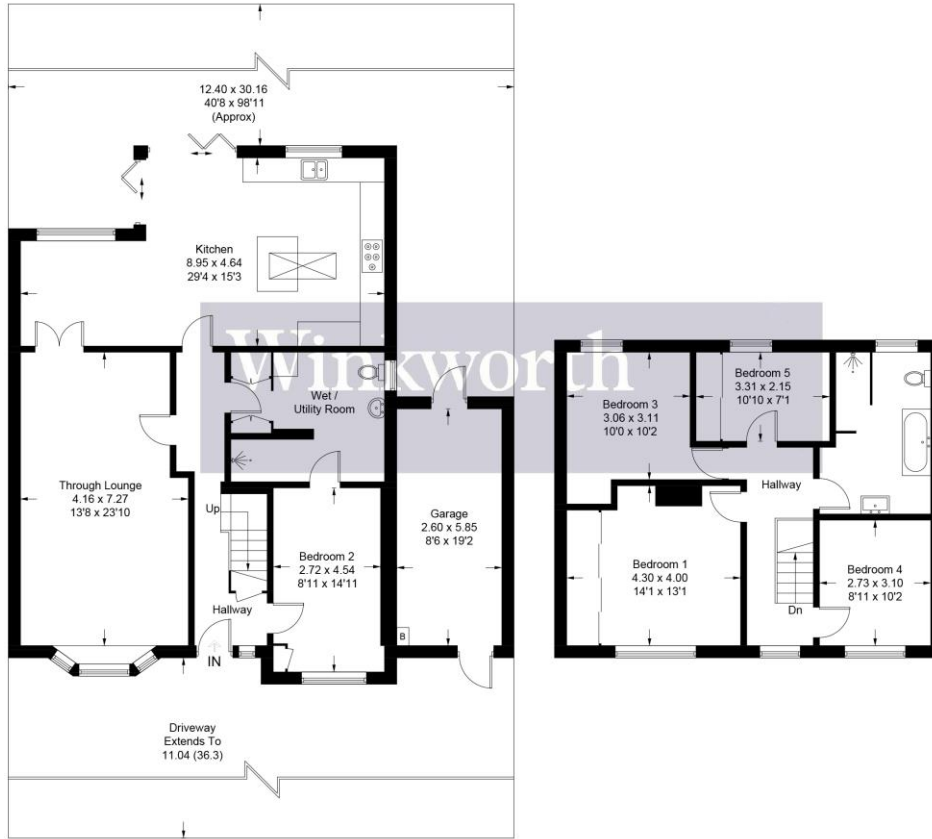


Illustration for identification purposes only, measurements are approximate, not to scale. Winkworth © 2023 (ID989860)

This floorplan is for illustration purposes only and is not to scale. The position and size of doors, windows, appliances and other features are approximate.

