



**HITHER FARM ROAD, BLACKHEATH, LONDON, SE3 9QT**  
**OIRO £500,000 FREEHOLD**

**A SUPERB THREE BEDROOM, TWO BATHROOM, END OF TERRACE HOUSE WITH A BEAUTIFUL GARDEN AND OFF STREET PARKING SET WITHIN THIS SOUGHT AFTER MODERN DEVELOPMENT VERY CLOSE TO THE STATION AND SOLD CHAIN FREE.**

**Blackheath | 0208 8520999 | [blackheath@winkworth.co.uk](mailto:blackheath@winkworth.co.uk)**

**Winkworth**

*winkworth.co.uk*

See things differently





## DESCRIPTION:

The property has been let out in recent keys and offers plenty of scope to enhance. Features include double glazed windows and gas fired central heating.

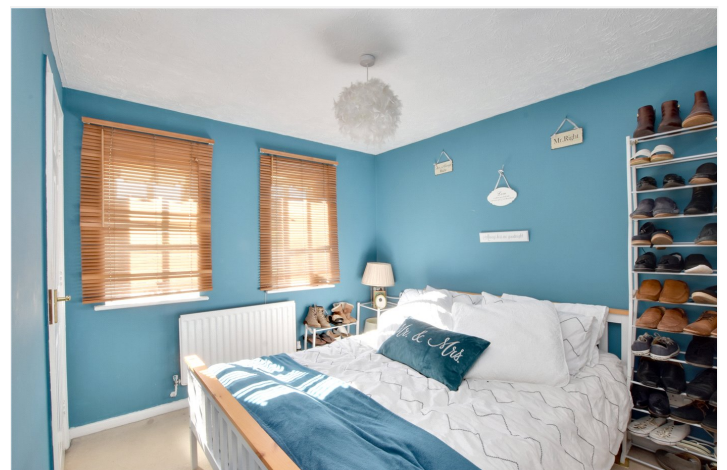
The accommodation comprises; a spacious living room with large storage cupboard, a good size kitchen and downstairs WC. Upstairs are three bedrooms, all with built in wardrobes and a master with ensuite shower room and a second family bathroom. To the rear of the property is a lovely and larger than usual 35 ft. west facing garden with patio, lawn, flower beds and shed. The property has the additional benefit of a parking space.

This is an excellent home and your immediate viewing is essential. There is no chain. Video tour can be seen at [Winkworth.co.uk](http://Winkworth.co.uk)

Hither Farm Road is a popular small modern housing development comprising of two and three bedroom houses. It is conveniently located just 290 metres from Kidbrooke Mainline station, (which is about to be rebuilt) and is just 17 minutes to London Bridge with trains also running to Charing Cross, Victoria and Cannon Street. The property is located just 270 metres from the new and prestigious Kidbrooke Village, is 816 metres to Sutcliffe Park and 0.96 miles to Blackheath Village (one stop on train) with its array of boutique shops, bars and restaurants.

## AT A GLANCE

- modern house
- end of terrace
- three bedrooms
- bathroom and ensuite
- lovely garden
- off street parking
- sought after development
- close to Station
- chain free



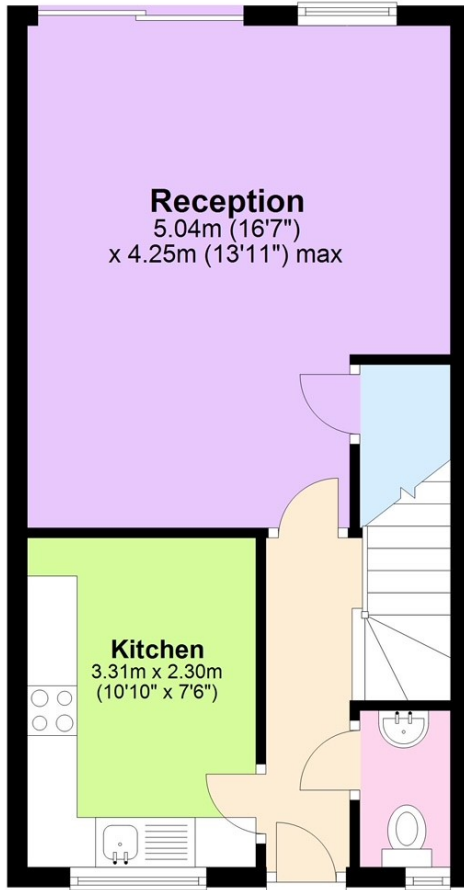






## Ground Floor

Approx. 35.9 sq. metres (386.6 sq. feet)



## First Floor

Approx. 35.9 sq. metres (386.6 sq. feet)



Total area: approx. 71.8 sq. metres (773.2 sq. feet)

This floorplan is for illustration purposes only and is not to scale. The position and size of doors, windows, appliances and other features are approximate.

Blackheath | 0208 8520999 | blackheath@winkworth.co.uk

**Winkworth**

*winkworth.co.uk*

See things differently

Winkworth wishes to inform prospective buyers and tenants that these particulars are a guide and act as information only. All our details are given in good faith and believed to be correct at the time of printing but they don't form part of an offer or contract. No Winkworth employee has authority to make or give any representation or warranty in relation to this property. All fixtures and fittings, whether fitted or not are deemed removable by the vendor unless stated otherwise and room sizes are measured between internal wall surfaces, including furnishings.