



30B, NORTHAMPTON SQUARE, LONDON, EC1V  
**£570,000**

**SITUATED IN THE BEAUTIFUL NORTHAMPTON SQUARE, A ONE BEDROOM PERIOD CONVERSION LOCATED OVER THE GROUND FLOOR OF A GEORGIAN HOUSE.**

Clerkenwell | 020 7405 1288 | [clerkenwell@winkworth.co.uk](mailto:clerkenwell@winkworth.co.uk)

**Winkworth**

for every step...

[winkworth.co.uk](http://winkworth.co.uk)





**DESCRIPTION:**

The property is well presented and comprises a separate modern fitted kitchen, wood floors, original sash windows, double bedroom and modern fitted bathroom.



**Winkworth**

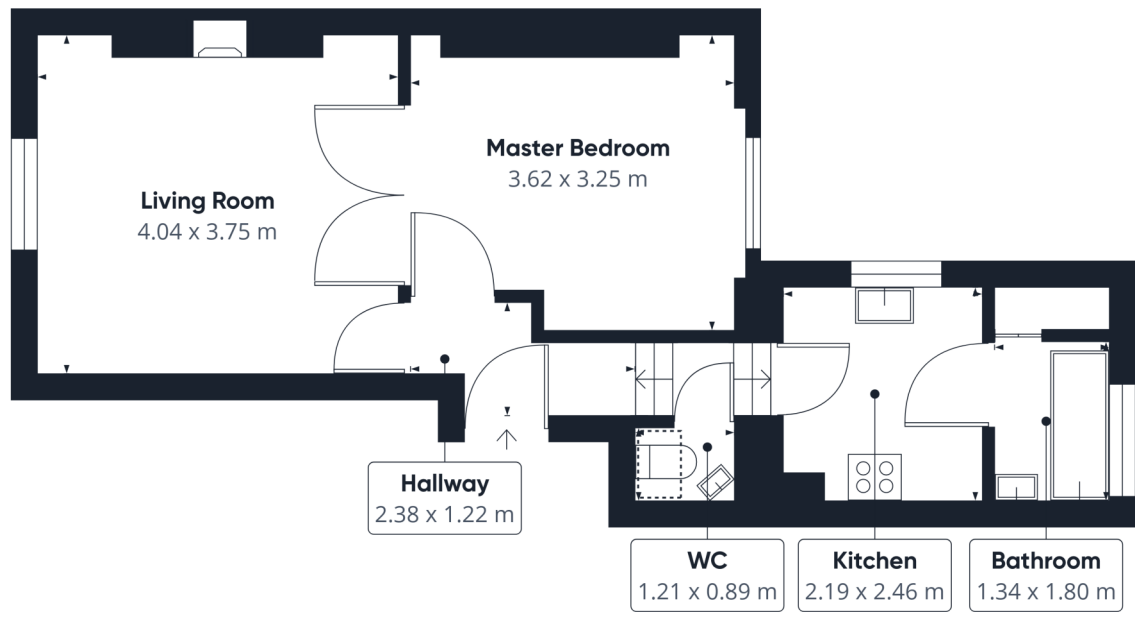
for every step...





**Winkworth**

for every step...



Approximate total area<sup>(1)</sup>  
39.47 m<sup>2</sup>

Reduced headroom  
0.42 m<sup>2</sup>

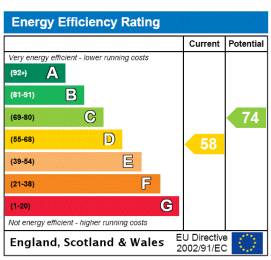
(1) Excluding balconies and terraces

Reduced headroom (below 1.5m/4.92ft)

While every attempt has been made to ensure accuracy, all measurements are approximate, not to scale. This floor plan is for illustrative purposes only.

GIRAFFE360

This floorplan is for illustration purposes only and is not to scale. The position and size of doors, windows, appliances and other features are approximate.



Clerkenwell | 020 7405 1288 | clerkenwell@winkworth.co.uk



for every step...

winkworth.co.uk

Winkworth wishes to inform prospective buyers and tenants that these particulars are a guide and act as information only. All our details are given in good faith and believed to be correct at the time of printing but they don't form part of an offer or contract. No Winkworth employee has authority to make or give any representation or warranty in relation to this property. All fixtures and fittings, whether fitted or not are deemed removable by the vendor unless stated otherwise and room sizes are measured between internal wall surfaces, including furnishings.